

## SOCS1 RABBIT PAB

货号: S219997

产品全名: SOCS1 兔多抗

基因符号: JAB; CIS1; SS1; TIP3; CISH1; SSI-1; TIP-3; AISIMD; SOCS-1

**UNIPROT ID:** O15524 (Gene Accession - NP\_003736)

**背景:** This gene encodes a member of the STAT-induced STAT inhibitor (SSI), also known as suppressor of cytokine signaling (SOCS), family. SSI family members are cytokine-inducible negative regulators of cytokine signaling. The expression of this gene can be induced by a subset of cytokines, including IL2, IL3 erythropoietin (EPO), CSF2/GM-CSF, and interferon (IFN)-gamma. The protein encoded by this gene functions downstream of cytokine receptors, and takes part in a negative feedback loop to attenuate cytokine signaling. Knockout studies in mice suggested the role of this gene as a modulator of IFN-gamma action, which is required for normal postnatal growth and survival.

**抗原:** Synthetic peptide of human SOCS1

**经过测试的应用:** ELISA, WB, IHC

**推荐稀释比:** IHC: 100-300;WB: 1000-5000;ELISA: 2000-10000

**种属反应性:** Rabbit

**克隆性:** Rabbit Polyclonal

**亚型:** Immunogen-specific rabbit IgG

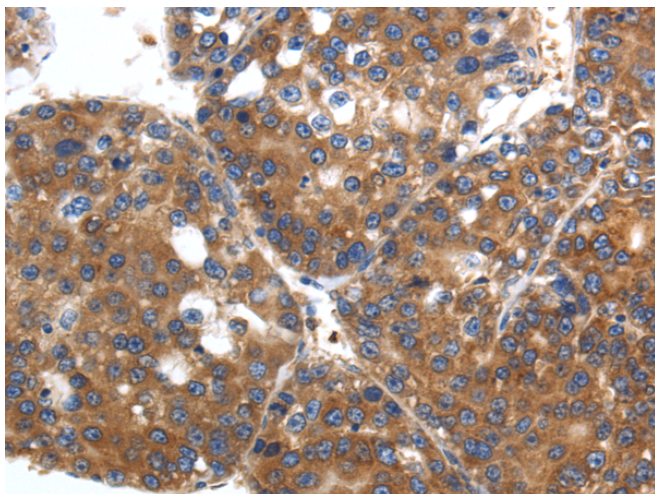
**纯化:** Antigen affinity purification

**种属反应性:** Human, Mouse, Rat

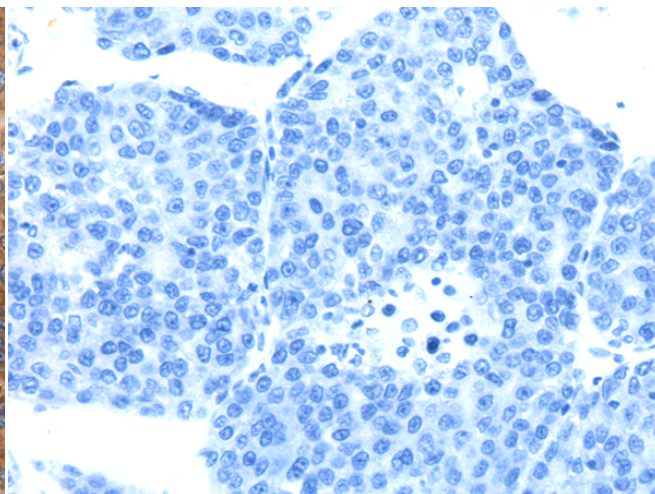
**成分:** PBS (without Mg<sup>2+</sup> and Ca<sup>2+</sup>), pH 7.4, 150 mM NaCl, 0.05% Sodium Azide and 40% glycerol

**研究领域:** Signal Transduction, Epigenetics and Nuclear Signaling, Immunology

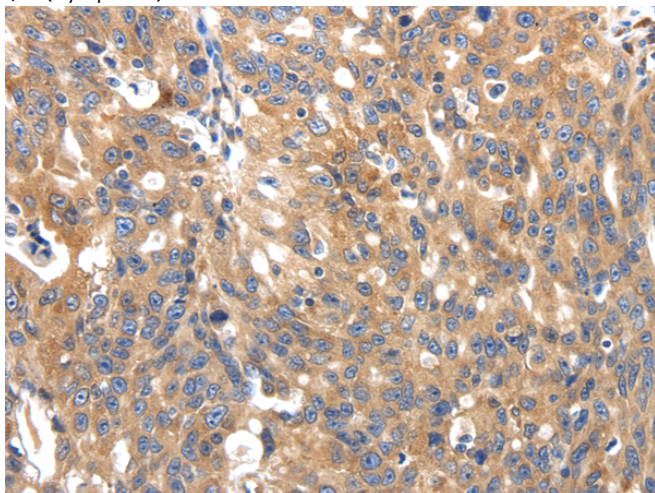
**储存和运输:** Store at -20°C. Avoid repeated freezing and thawing



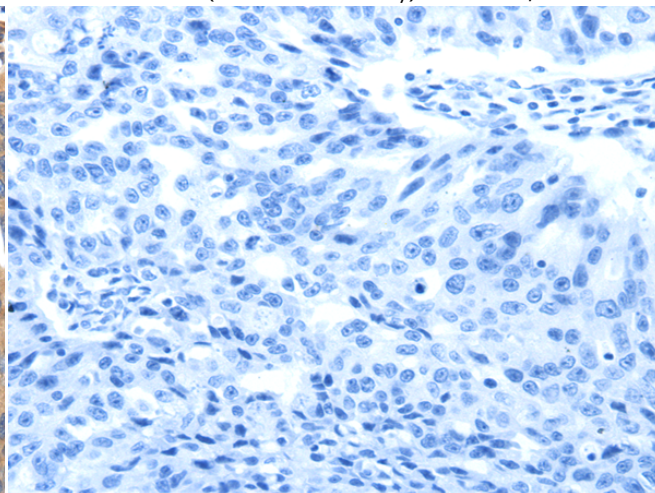
Immunohistochemistry analysis of paraffin embedded Human liver cancer tissue using 219997(SOCS1 Antibody) at a dilution of 1/90(Cytoplasm).



In comparison with the IHC on the left, the same paraffin-embedded Human liver cancer tissue is first treated with the synthetic peptide and then with 219997(Anti-SOCS1 Antibody) at dilution 1/90.



The image on the left is immunohistochemistry of paraffin-embedded Human ovarian cancer tissue using 219997(Anti-SOCS1 Antibody) at a dilution of 1/90.



In comparison with the IHC on the left, the same paraffin-embedded Human ovarian cancer tissue is first treated with synthetic peptide and then with D260748(Anti-SOCS1 Antibody) at dilution 1/90.

kDa

100 —  
70 —  
55 —  
35 —  
25 —  
15 —  
10 —



Gel: 12%SDS-PAGE, Lysate: 40 µg;  
Lane: 231 cell lysate;  
Primary antibody: 219997(SOCS1 Antibody) at dilution 1/1700;  
Secondary antibody: HRP-conjugated Goat anti rabbit IgG at 1/5000 dilution;  
Exposure time: 5 minutes



# Product Description

Pioneering GTPase and Oncogene Product Development since 2010

---