

## SNX9 RABBIT MAB

货号: N262894

产品全名: SNX9 兔单克隆抗体

基因符号 SDPI; WISP; SH3PX1; SH3PXD3A

**UNIPROT ID:** Q9Y5X1

背景: Involved in endocytosis and intracellular vesicle trafficking, both during interphase and at the end of mitosis.

抗原: Recombinant protein of human SH3PX1

经过测试的应用: WB,IHC-F,IHC-P,ICC/IF,IP

推荐稀释比: WB: 1/500-1/1000 IHC: 1/50-1/100 IF: 1/50-1/200 IP: 1/20

种属反应性: Rabbit

克隆性: Rabbit Monoclonal

克隆编号: R03-515

分子量: Calculated MW: 67 kDa; Observed MW: 67 kDa

亚型: IgG

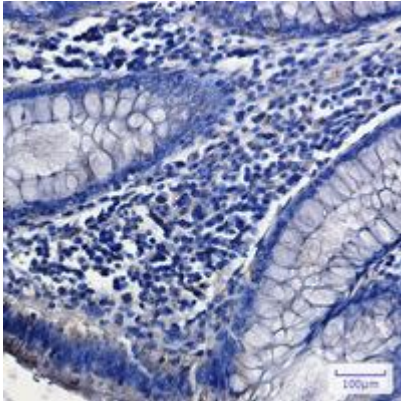
纯化: Affinity Purified

种属反应性: Human,Mouse

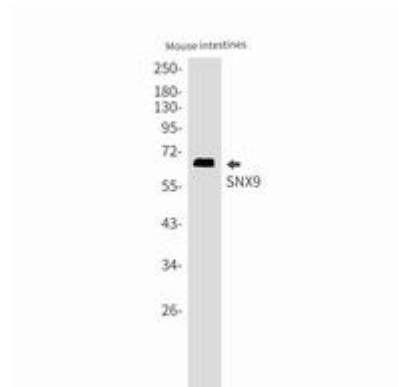
成分: PBS (without Mg<sup>2+</sup> and Ca<sup>2+</sup>), pH 7.3 containing 50% glycerol, 0.5% BSA and 0.02% sodium azide

研究领域: Signal Transduction

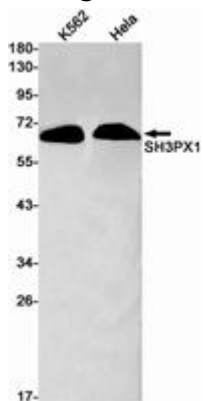
储存和运输: Store at -20°C. Avoid repeated freezing and thawing



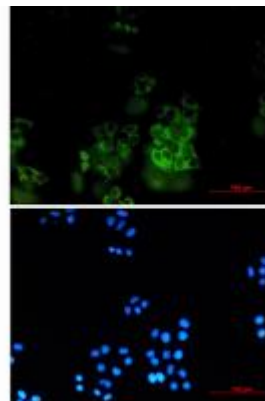
Immunohistochemistry analysis of paraffin-embedded Human colon cancer using SNX9 antibody. High-pressure and temperature Sodium Citrate pH 6.0 was used for antigen retrieval.



Western blot analysis of SNX9 in mouse intestines lysates using SNX9 antibody.



Western blot analysis of SH3PX1 in K562, HeLa lysates using SH3PX1 antibody.



Immunocytochemistry analysis of SNX9 (green) in HeLa using SNX9 antibody, and DAPI (blue).