

## SNX30 RABBIT PAB

货号: S220960

产品全名: SNX30 兔多抗

基因符号: ATG24A

**UNIPROT ID:** Q5VWJ9 (Gene Accession - NP\_001013012)

**背景:** SNX9, SNX18 and SNX30 constitute a separate subfamily of PX-BAR-containing sorting nexin (SNX) proteins. May be involved in several stages of intracellular trafficking.

**抗原:** Synthetic peptide of human SNX30

**经过测试的应用:** ELISA, IHC

**推荐稀释比:** IHC: 25-100; ELISA: 1000-2000

**种属反应性:** Rabbit

**克隆性:** Rabbit Polyclonal

**亚型:** Immunogen-specific rabbit IgG

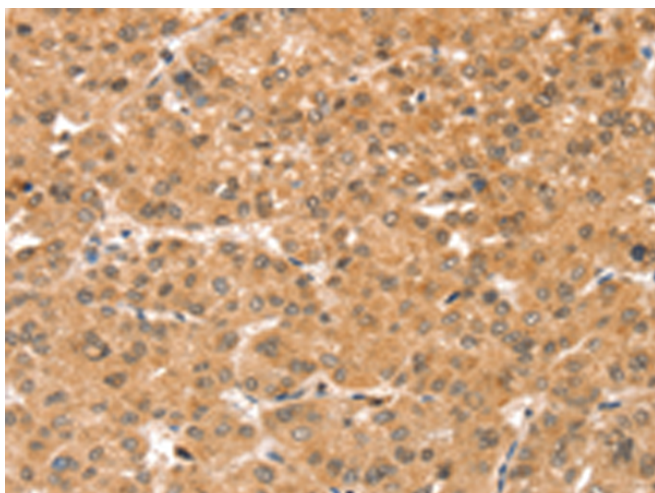
**纯化:** Antigen affinity purification

**种属反应性:** Human, Mouse

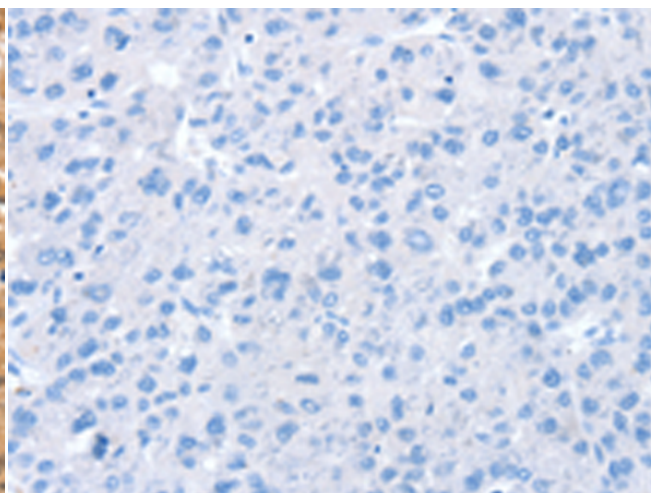
**成分:** PBS (without Mg<sup>2+</sup> and Ca<sup>2+</sup>), pH 7.4, 150 mM NaCl, 0.05% Sodium Azide and 40% glycerol

**研究领域:** Signal Transduction

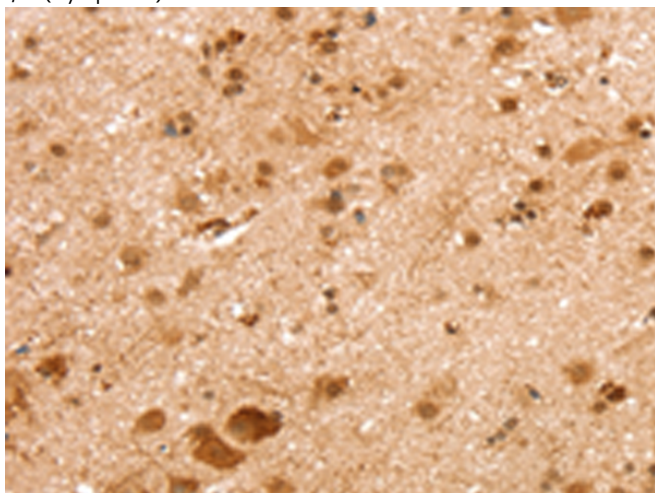
**储存和运输:** Store at -20°C. Avoid repeated freezing and thawing



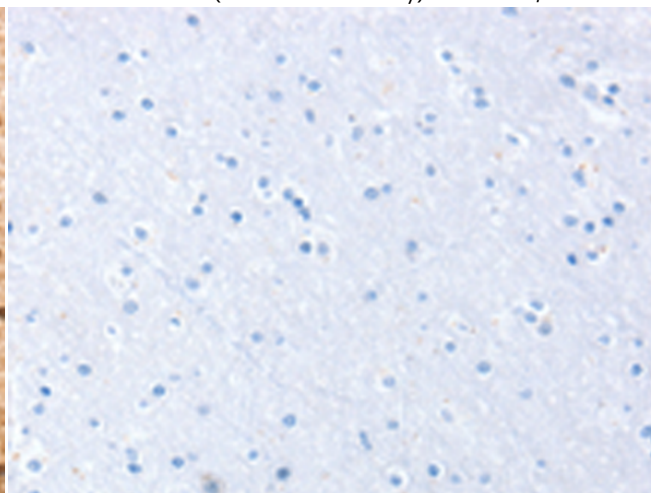
Immunohistochemistry analysis of paraffin embedded Human liver cancer tissue using 220960(SNX30 Antibody) at a dilution of 1/35(Cytoplasm).



In comparison with the IHC on the left, the same paraffin-embedded Human liver cancer tissue is first treated with the synthetic peptide and then with 220960(Anti-SNX30 Antibody) at dilution 1/35.



The image on the left is immunohistochemistry of paraffin-embedded Human brain tissue using 220960(Anti-SNX30 Antibody) at a dilution of 1/35.



In comparison with the IHC on the left, the same paraffin-embedded Human brain tissue is first treated with synthetic peptide and then with D262288(Anti-SNX30 Antibody) at dilution 1/35.



# Product Description

Pioneering GTPase and Oncogene Product Development since 2010

---