

SNX24 RABBIT PAB

货号: S219564

产品全名: SNX24 兔多抗

基因符号 SBBI31; PRO1284

UNIPROT ID: Q9Y343 (Gene Accession - BC010886)

背景: Predicted to enable phosphatidylinositol phosphate binding activity. Predicted to be involved in protein transport. Predicted to be located in cytoplasmic vesicle membrane.

抗原: Fusion protein of human SNX24

经过测试的应用: ELISA, IHC

推荐稀释比: IHC: 50-200; ELISA: 5000-10000

种属反应性: Rabbit

克隆性: Rabbit Polyclonal

亚型: Immunogen-specific rabbit IgG

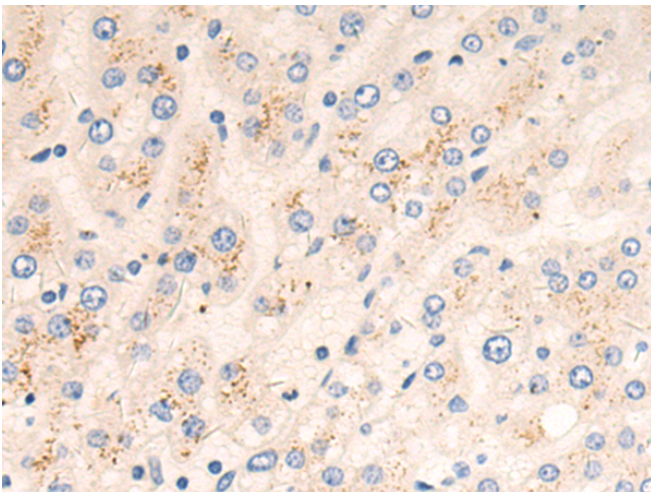
纯化: Antigen affinity purification

种属反应性: Human, Mouse, Rat

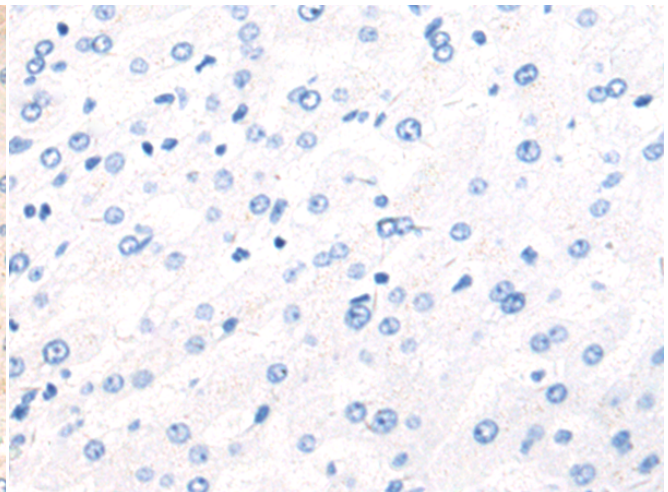
成分: PBS (without Mg²⁺ and Ca²⁺), pH 7.4, 150 mM NaCl, 0.05% Sodium Azide and 40% glycerol

研究领域: Signal Transduction

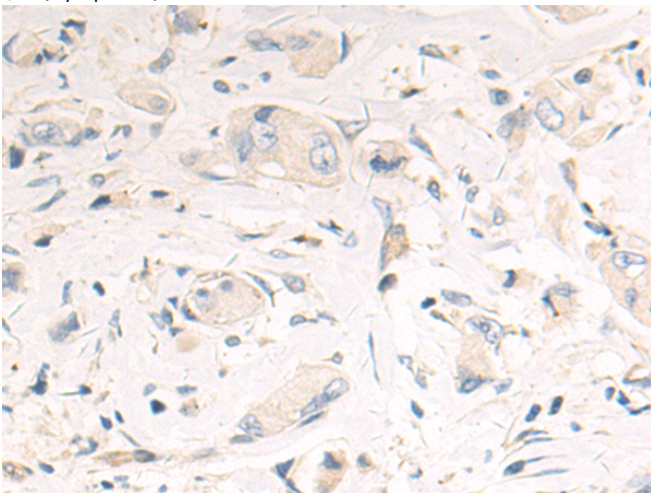
储存和运输: Store at -20°C. Avoid repeated freezing and thawing



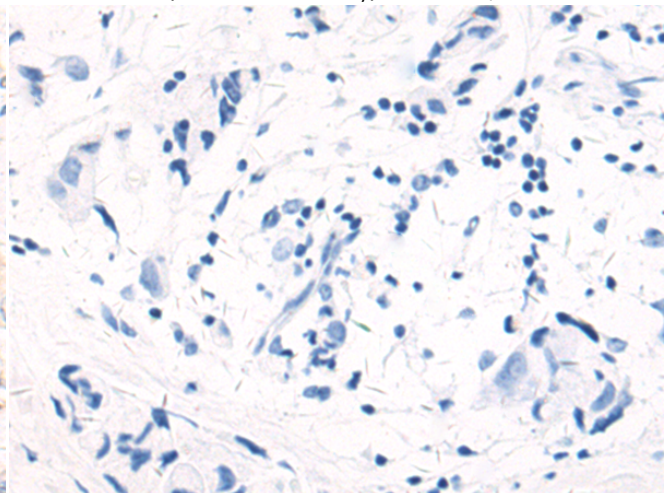
Immunohistochemistry analysis of paraffin embedded Human liver cancer tissue using 219564(SNX24 Antibody) at a dilution of 1/55(Cytoplasm).



In comparison with the IHC on the left, the same paraffin-embedded Human liver cancer tissue is first treated with the fusion protein and then with 219564(Anti-SNX24 Antibody) at dilution 1/55.



The image on the left is immunohistochemistry of paraffin-embedded Human breast cancer tissue using 219564(Anti-SNX24 Antibody) at a dilution of 1/55.



In comparison with the IHC on the left, the same paraffin-embedded Human breast cancer tissue is first treated with fusion protein and then with D227775(Anti-SNX24 Antibody) at dilution 1/55.



Product Description

Pioneering GTPase and Oncogene Product Development since 2010
