

SNRPG RABBIT PAB

货号: S222166

产品全名: SNRPG 兔多抗

基因符号 SMG; Sm-G

UNIPROT ID: P62308 (Gene Accession - NP_003087)

背景: The protein encoded by this gene is a component of the U1, U2, U4, and U5 small nuclear ribonucleoprotein complexes, precursors of the spliceosome. The encoded protein may also be a part of the U7 small nuclear ribonucleoprotein complex which participates in the processing of the 3' end of histone transcripts. Several transcript variants encoding different isoforms have been found for this gene.

抗原: Synthetic peptide of human SNRPG

经过测试的应用: ELISA, WB, IHC

推荐稀释比: IHC: 20-100;WB: 200-1000;ELISA: 5000-10000

种属反应性: Rabbit

克隆性: Rabbit Polyclonal

亚型: Immunogen-specific rabbit IgG

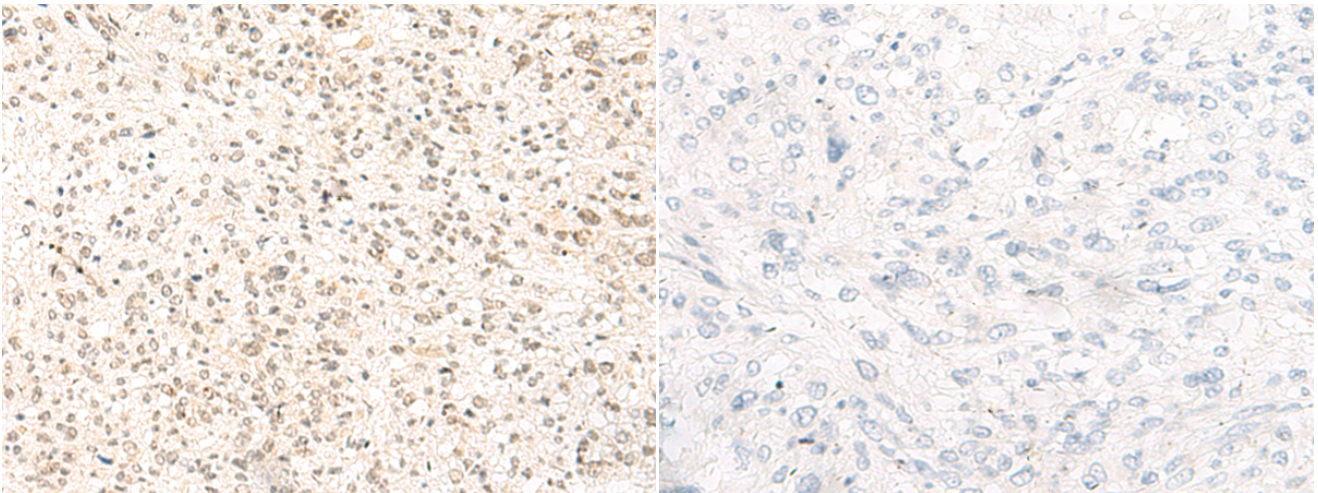
纯化: Antigen affinity purification

种属反应性: Human, Mouse

成分: PBS (without Mg²⁺ and Ca²⁺), pH 7.4, 150 mM NaCl, 0.05% Sodium Azide and 40% glycerol

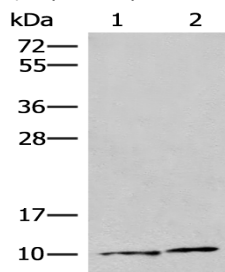
研究领域: Epigenetics and Nuclear Signaling

储存和运输: Store at -20°C. Avoid repeated freezing and thawing



Immunohistochemistry analysis of paraffin embedded Human liver cancer tissue using 222166(SNRPG Antibody) at a dilution of 1/30(Nucleus).

In comparison with the IHC on the left, the same paraffin-embedded Human liver cancer tissue is first treated with the synthetic peptide and then with 222166(Anti-SNRPG Antibody) at dilution 1/30.



Gel: 12%SDS-PAGE, Lysate: 40 µg;
Lane 1-2: Jurkat and 293T cell lysates;
Primary antibody: 222166(SNRPG Antibody) at dilution 1/350;
Secondary antibody: Goat anti rabbit IgG at 1/8000 dilution;
Exposure time: 1 minute