

## SNAP25 RABBIT PAB

货号: N225831

产品全名: SNAP25 兔多抗

基因符号 Synaptosomal-associated protein 25; SNAP-25; Super protein; SUP; Synaptosomal-associated 25 kDa protein; SNAP25; SNAP

**UNIPROT ID:** P60880

**背景:** SNAP25 forms a core complex with the SNARE proteins syntaxin and synaptobrevin to mediate synaptic vesicle fusion with the plasma membrane during Ca<sup>2+</sup>-dependent exocytosis. This complex is responsible for exocytosis of the neurotransmitter  $\gamma$ -aminobutyric acid (GABA). Neurotransmitter release is inhibited by proteolysis of SNAP25 by botulinum toxins A and E. SNAP25 plays a secondary role as a Q-SNARE involved in endosome fusion; the protein is associated with genetic susceptibility to attention-deficit hyperactivity disorder (ADHD).

**抗原:** A synthesized peptide derived from human SNAP25

**经过测试的应用:** WB, ICC/IF, IP

**推荐稀释比:** WB: 1/500-1/1000 IF: 1/50-1/200 IP: 1/20

**种属反应性:** Rabbit

**克隆性:** Rabbit Polyclonal

**分子量:** Calculated MW: 23 kDa; Observed MW: 23 kDa

**亚型:** IgG

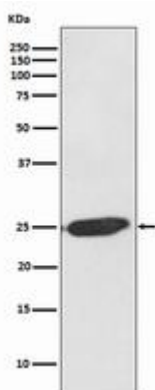
**纯化:** Affinity Chromatography

**种属反应性:** Human, Mouse and Rat

**成分:** PBS (without Mg<sup>2+</sup> and Ca<sup>2+</sup>), pH 7.3 containing 50% glycerol, 0.5% BSA and 0.02% sodium azide

**研究领域:** Neuroscience&SNAP25

**储存和运输:** Store at -20°C. Avoid repeated freezing and thawing



Western blot analysis of SNAP25 in SH-SY5Y lysates using SNAP25 antibody.



# Product Description

Pioneering GTPase and Oncogene Product Development since 2010

---