

SMYD3 RABBIT MAB

货号: N262915

产品全名: SMYD3 兔单克隆抗体

基因符号 KMT3E; ZMYND1; ZNFN3A1; bA74P14.1

UNIPROT ID: Q9H7B4

背景: Histone methyltransferase. Specifically methylates 'Lys-4' of histone H3, inducing di- and tri-methylation, but not monomethylation. Plays an important role in transcriptional activation as a member of an RNA polymerase complex. Binds DNA containing 5'-CCCTCC-3' or 5'-GAGGGG-3' sequences.

抗原: A synthetic peptide of human SMYD3

经过测试的应用: WB,IHC-F,IHC-P,ICC/IF,IP

推荐稀释比: WB: 1/500-1/1000 IHC: 1/50-1/100 IF: 1/50-1/200 IP: 1/20

种属反应性: Rabbit

克隆性: Rabbit Monoclonal

克隆编号: R03-217

分子量: Calculated MW: 49 kDa; Observed MW: 49 kDa

亚型: IgG

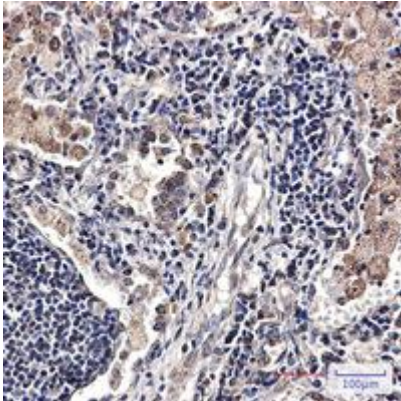
纯化: Affinity Purified

种属反应性: Human

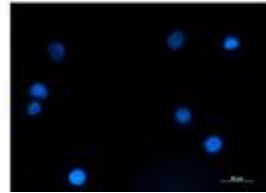
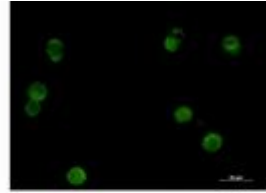
成分: PBS (without Mg²⁺ and Ca²⁺), pH 7.3 containing 50% glycerol, 0.5% BSA and 0.02% sodium azide

研究领域: Epigenetics and Nuclear Signaling

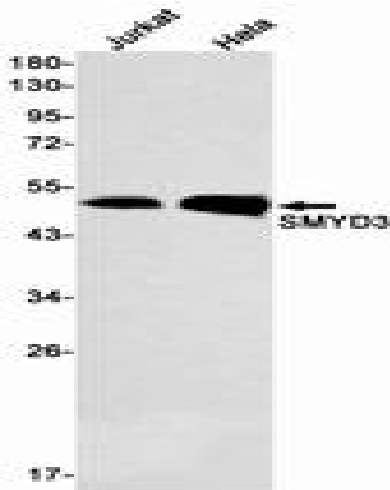
储存和运输: Store at -20°C. Avoid repeated freezing and thawing



Immunohistochemistry analysis of paraffin-embedded Human lung cancer tissue using SMYD3 antibody. High-pressure and temperature Sodium Citrate pH 6.0 was used for antigen retrieval.



Immunocytochemistry analysis of SMYD3 (green) in K562 using SMYD3 antibody, and DAPI (blue).



Western blot analysis of SMYD3 in Jurkat, HeLa lysates using SMYD3 antibody.