

SMS RABBIT PAB

货号: S218663

产品全名: SMS 兔多抗

基因符号 SRS; SpS; MRSR; SPMSY; MRXSSR

UNIPROT ID: P52788 (Gene Accession - BC009898)

背景: This gene encodes a protein belonging to the spermidine/spermin synthase family and catalyzes the production of spermine from spermidine. Pseudogenes of this gene are located on chromosomes 1, 5, 6 and X. Mutations in this gene cause an X-linked intellectual disability called Snyder-Robinson Syndrome (SRS). Multiple transcript variants encoding different isoforms have been found for this gene.

抗原: Fusion protein of human SMS

经过测试的应用: ELISA, IHC

推荐稀释比: IHC: 50-200; ELISA: 5000-10000

种属反应性: Rabbit

克隆性: Rabbit Polyclonal

亚型: Immunogen-specific rabbit IgG

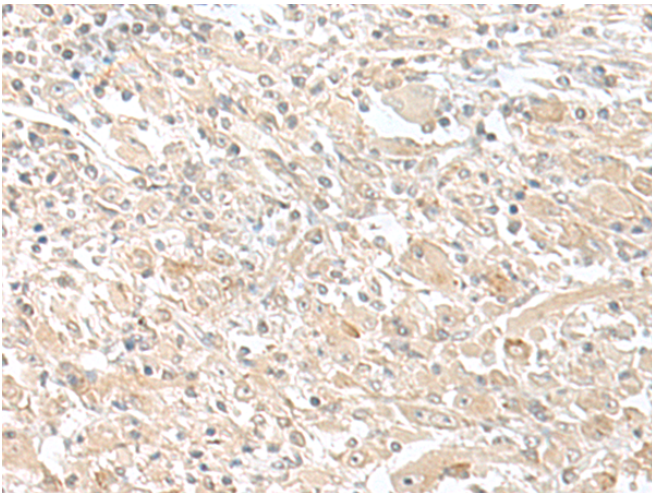
纯化: Antigen affinity purification

种属反应性: Human, Mouse

成分: PBS (without Mg²⁺ and Ca²⁺), pH 7.4, 150 mM NaCl, 0.05% Sodium Azide and 40% glycerol

研究领域: Metabolism, Developmental Biology

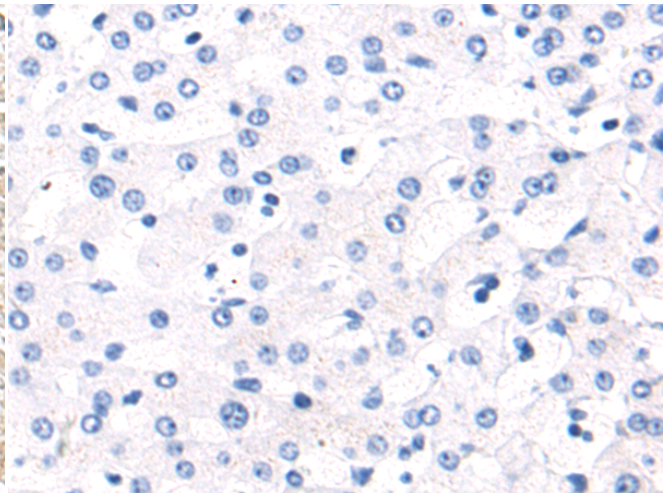
储存和运输: Store at -20°C. Avoid repeated freezing and thawing



Immunohistochemistry analysis of paraffin embedded Human liver cancer tissue using 218663(SMS Antibody) at a dilution of 1/80(Cytoplasm).



The image on the left is immunohistochemistry of paraffin-embedded Human colorectal cancer tissue using 218663(Anti-SMS Antibody) at a dilution of 1/80.



In comparison with the IHC on the left, the same paraffin-embedded Human liver cancer tissue is first treated with the fusion protein and then with 218663(Anti-SMS Antibody) at dilution 1/80.



In comparison with the IHC on the left, the same paraffin-embedded Human colorectal cancer tissue is first treated with fusion protein and then with D224889(Anti-SMS Antibody) at dilution 1/80.