

## SMPD2 RABBIT PAB

货号: S219113

产品全名: SMPD2 兔多抗

基因符号: ISC1; NSMASE; NSMASE1

**UNIPROT ID:** O60906 (Gene Accession - BC000038)

**背景:** This gene encodes a protein which was initially identified as a sphingomyelinase based on sequence similarity between bacterial sphingomyelinases and a yeast protein. Subsequent studies showed that its biological function is less likely to be as a sphingomyelinase and instead as a lysophospholipase.

**抗原:** Fusion protein of human SMPD2

**经过测试的应用:** ELISA, WB, IHC

**推荐稀释比:** IHC: 50-300;WB: 1000-5000;ELISA: 5000-10000

**种属反应性:** Rabbit

**克隆性:** Rabbit Polyclonal

**亚型:** Immunogen-specific rabbit IgG

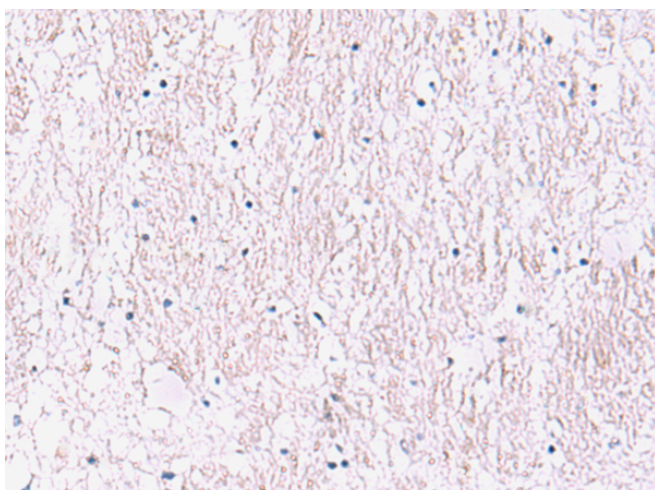
**纯化:** Antigen affinity purification

**种属反应性:** Human, Mouse, Rat

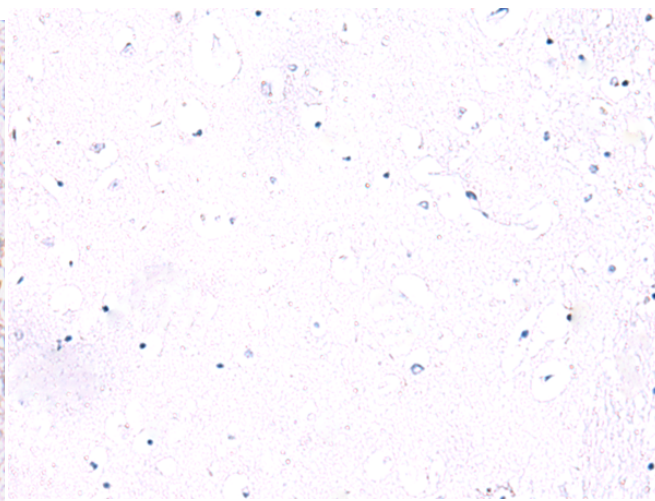
**成分:** PBS (without Mg<sup>2+</sup> and Ca<sup>2+</sup>), pH 7.4, 150 mM NaCl, 0.05% Sodium Azide and 40% glycerol

**研究领域:** Neuroscience

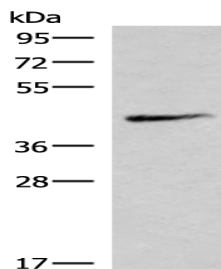
**储存和运输:** Store at -20°C. Avoid repeated freezing and thawing



Immunohistochemistry analysis of paraffin embedded Human brain tissue using 219113(SMPD2 Antibody) at a dilution of 1/90(Cytoplasm).



In comparison with the IHC on the left, the same paraffin-embedded Human brain tissue is first treated with the fusion protein and then with 219113(Anti-SMPD2 Antibody) at dilution 1/90.



Gel: 8%SDS-PAGE, Lysate: 40 µg;

Lane: Mouse lung tissue lysate;

Primary antibody: 219113(SMPD2 Antibody) at dilution 1/1000;

Secondary antibody: HRP-conjugated Goat anti rabbit IgG at 1/5000 dilution;

Exposure time: 10 minutes