

## SMN RABBIT MAB

货号: N262269

产品全名: SMN 兔单克隆抗体

基因符号 SMN1; SMN; SMNT; SMN2; SMNC; Survival motor neuron protein;  
Component of gems 1; Gemin-1

**UNIPROT ID:** Q16637

背景: The SMN complex plays an essential role in spliceosomal snRNP assembly in the cytoplasm and is required for pre-mRNA splicing in the nucleus. It may also play a role in the metabolism of snoRNPs.

抗原: A synthetic peptide of human Gemin 1

经过测试的应用: WB,IHC-P,IP

推荐稀释比: WB: 1/500-1/1000 IHC: 1/50-1/100 IP: 1/20

种属反应性: Rabbit

克隆性: Rabbit Monoclonal

克隆编号: R08-1A7

分子量: Calculated MW: 32 kDa; Observed MW: 35 kDa

亚型: IgG

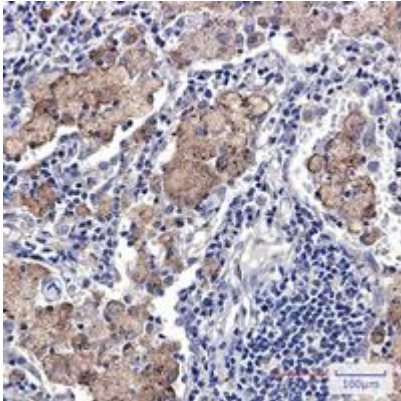
纯化: Affinity Purified

种属反应性: Human

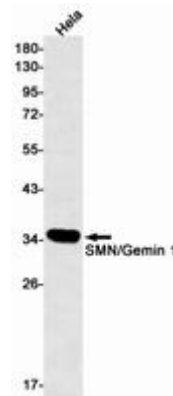
成分: PBS (without Mg<sup>2+</sup> and Ca<sup>2+</sup>), pH 7.3 containing 50% glycerol, 0.5% BSA and 0.02% sodium azide

研究领域: Neuroscience

储存和运输: Store at -20°C. Avoid repeated freezing and thawing



Immunohistochemistry analysis of paraffin-embedded Human lung cancer using Gemin 1 antibody. High-pressure and temperature Sodium Citrate pH 6.0 was used for antigen retrieval.



Western blot analysis of SMN/Gemin 1 in Hela lysates using SMN antibody.