

**SMN RABBIT MAB**

货号: N262270

产品全名: SMN 兔单克隆抗体

基因符号 SMN1; SMN; SMNT; SMN2; SMNC; Survival motor neuron protein; Component of gems 1; Gemin-1

**UNIPROT ID:** Q16637

背景: The SMN complex plays an essential role in spliceosomal snRNP assembly in the cytoplasm and is required for pre-mRNA splicing in the nucleus. It may also play a role in the metabolism of snoRNPs.

抗原: A synthetic peptide of human Gemin 1

经过测试的应用: WB, ICC/IF

推荐稀释比: WB: 1/500-1/1000 IF: 1/50-1/200

种属反应性: Rabbit

克隆性: Rabbit Monoclonal

克隆编号: R05-3B5

分子量: Calculated MW: 32 kDa; Observed MW: 35 kDa

亚型: IgG

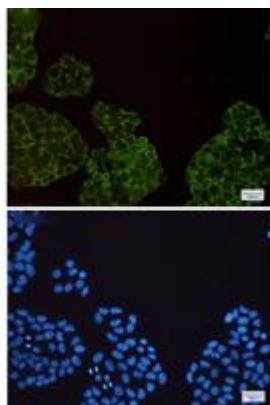
纯化: Affinity Purified

种属反应性: Human

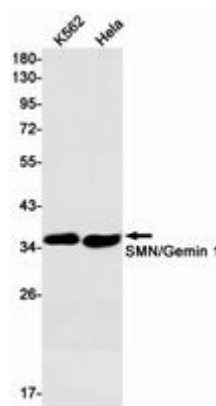
成分: PBS (without Mg<sup>2+</sup> and Ca<sup>2+</sup>), pH 7.3 containing 50% glycerol, 0.5% BSA and 0.02% sodium azide

研究领域: Neuroscience

储存和运输: Store at -20°C. Avoid repeated freezing and thawing



Immunocytochemistry analysis of Gemin 1 (green) in HeLa using Gemin 1 antibody, and DAPI (blue)



Western blot analysis of SMN/Gemin 1 in K562, HeLa lysates using SMN antibody.

