

## SMC6 RABBIT PAB

货号: S220953

产品全名: SMC6 兔多抗

基因符号: SMC-6; hSMC6; SMC6L1

**UNIPROT ID:** Q96SB8 (Gene Accession - NP\_078900)

**背景:** Structural maintenance of chromosomes protein 6 is a protein that in humans is encoded by the SMC6 gene. Core component of the SMC5-SMC6 complex, a complex involved in DNA double-strand breaks by homologous recombination. The complex may promote sister chromatid homologous recombination by recruiting the SMC1-SMC3 cohesin complex to double-strand breaks.

**抗原:** Synthetic peptide of human SMC6

**经过测试的应用:** ELISA, WB, IHC

**推荐稀释比:** IHC: 20-100; WB: 500-2000; ELISA: 2000-5000

**种属反应性:** Rabbit

**克隆性:** Rabbit Polyclonal

**亚型:** Immunogen-specific rabbit IgG

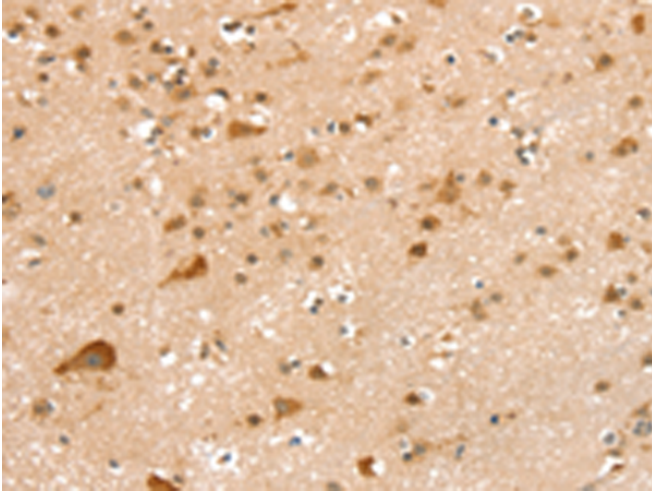
**纯化:** Antigen affinity purification

**种属反应性:** Human

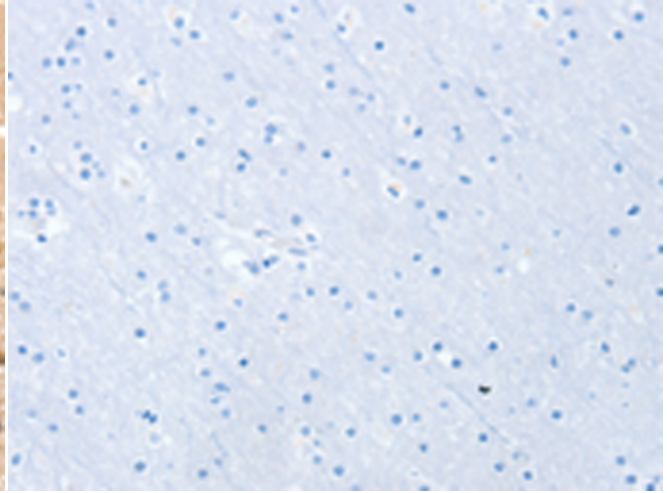
**成分:** PBS (without Mg<sup>2+</sup> and Ca<sup>2+</sup>), pH 7.4, 150 mM NaCl, 0.05% Sodium Azide and 40% glycerol

**研究领域:** Epigenetics and Nuclear Signaling, Cancer

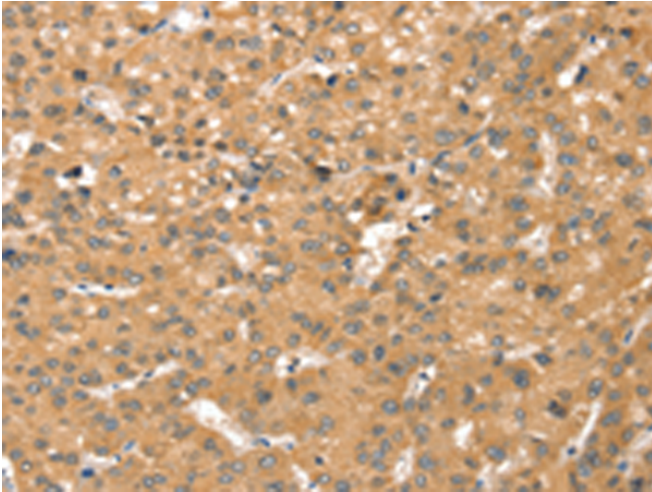
**储存和运输:** Store at -20°C. Avoid repeated freezing and thawing



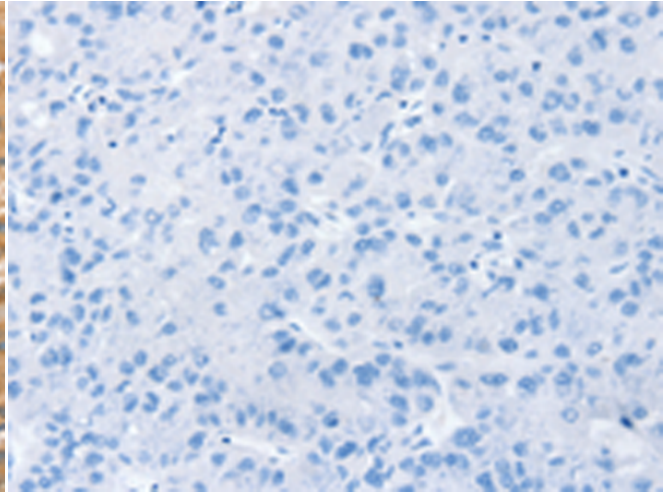
Immunohistochemistry analysis of paraffin embedded Human brain tissue using 220953(SMC6 Antibody) at a dilution of 1/20(Cytoplasm or Nucleus).



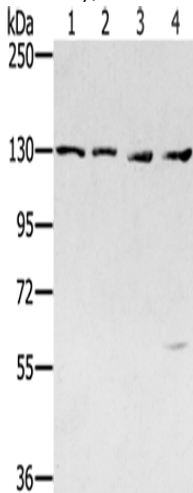
In comparison with the IHC on the left, the same paraffin-embedded Human brain tissue is first treated with the synthetic peptide and then with 220953(Anti-SMC6 Antibody) at dilution 1/20.



The image on the left is immunohistochemistry of paraffin-embedded Human liver cancer tissue using 220953(Anti-SMC6 Antibody) at a dilution of 1/20.



In comparison with the IHC on the left, the same paraffin-embedded Human liver cancer tissue is first treated with synthetic peptide and then with D262276(Anti-SMC6 Antibody) at dilution 1/20.



Gel: 6%SDS-PAGE, Lysate: 40 µg;  
Lane 1-4: Jurkat cells, 231 cells, hela cells, 293T cells;  
Primary antibody: 220953(SMC6 Antibody) at dilution 1/250;  
Secondary antibody: Goat anti rabbit IgG at 1/8000 dilution;  
Exposure time: 2 minutes



# Product Description

Pioneering GTPase and Oncogene Product Development since 2010

---