

SMC1A (4C5) MOUSE MAB

货号: N261019

产品全名: SMC1A (4C5) 小鼠单抗

基因符号 Chromosome segregation protein SmcB; DXS423E; KIAA0178; MGC138332; Sb1.8; Segregation of mitotic chromosomes 1; SMC protein 1A; SMC-1-alpha; SMC-1A; SMC1 (structural maintenance of chromosomes 1 yeast) like 1; SMC1; SMC1 structural maintenance of chromosomes 1 like 1; SMC1A; SMC1A_HUMAN; SMC1alpha; SMC1L1; SMCB; Structural maintenance of chromosomes 1A; Structural maintenance of chromosomes protein 1A.

UNIPROT ID: Q14683

背景: Structural maintenance of chromosomes 1 (SMC1) protein is a chromosomal protein member of the cohesin complex that enables sister chromatid cohesion and plays a role in DNA repair . ATM/NBS1-dependent phosphorylation of SMC1 occurs at Ser957 and Ser966 in response to ionizing radiation (IR) as part of the intra-S-phase DNA damage checkpoint. SMC1 phosphorylation is ATM-independent in cells subjected to other forms of DNA damage, including UV light and hydroxyurea treatment.

抗原: Purified recombinant human SMC1A(C-term.) protein fragments expressed in E.coli.

经过测试的应用: WB,ICC/IF

推荐稀释比: WB: 1/500-1/1000 IF: 1/50-1/200

种属反应性: Mouse

克隆性: Mouse Monoclonal

克隆编号: 4C5-C8-A11

分子量: Calculated MW: 143 kDa; Observed MW: 143 kDa

亚型: IgG1

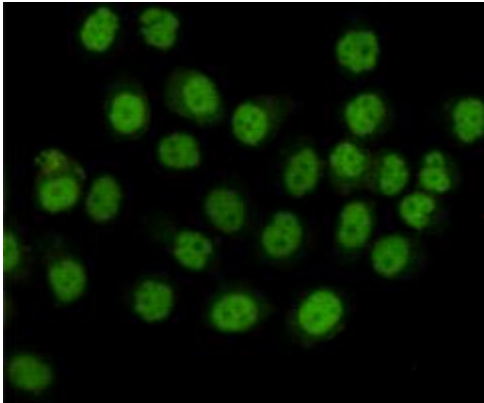
纯化: Affinity Purified

种属反应性: Human

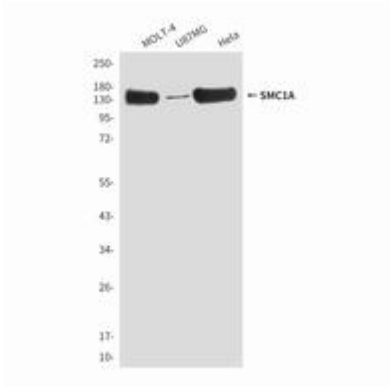
成分: PBS (without Mg²⁺ and Ca²⁺), pH 7.3 containing 50% glycerol, 0.5% BSA and 0.02% sodium azide

研究领域: Cell Biology

储存和运输: Store at -20°C. Avoid repeated freezing and thawing



Immunocytochemistry analysis of SMC1A (4C5) in HeLa using SMC1A antibody.



Western blot analysis of SMC1A(Cterm) in MOLT4, U87 MG and HeLaNE lysates using SMC1A (Nterminus) antibody.