

## SMARCD1 RABBIT MAB

货号: N263553

产品全名: SMARCD1 兔单克隆抗体

基因符号 CSS11; Rsc6p; BAF60A; CRACD1

**UNIPROT ID:** Q96GM5

背景: Involved in transcriptional activation and repression of select genes by chromatin remodeling (alteration of DNA-nucleosome topology).

抗原: A synthetic peptide of human SMARCD1

经过测试的应用: WB,IP

推荐稀释比: WB: 1/500-1/1000 IP: 1/20

种属反应性: Rabbit

克隆性: Rabbit Monoclonal

克隆编号: R01-0E4

分子量: Calculated MW: 58 kDa; Observed MW: 58 kDa

亚型: IgG

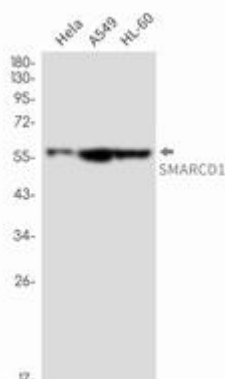
纯化: Affinity Purified

种属反应性: Human

成分: PBS (without Mg<sup>2+</sup> and Ca<sup>2+</sup>), pH 7.3 containing 50% glycerol, 0.5% BSA and 0.02% sodium azide

研究领域: Epigenetics and Nuclear Signaling

储存和运输: Store at -20°C. Avoid repeated freezing and thawing



Western blot analysis of SMARCD1 in HeLa, A549, HL-60 lysates using SMARCD1 antibody.