

SMARCB1 RABBIT MAB

货号: N262919

产品全名: SMARCB1 兔单克隆抗体

基因符号 SMARCB1; BAF47; hSNF5; INI1; RDT; RTPS1; Sfh1p; SMARCB1; SNF5 homolog; SNF5L1; Snr1; SWI/SNF comp

UNIPROT ID: Q12824

背景: The SWI-SNF complex is involved in the activation of transcription via the remodeling of nucleosome structure in an ATP-dependent manner. Brm (also designated SNF2 α) and Brg-1 (also designated SNF2 β) are the ATPase subunits of the mammalian SWI-SNF complex.

抗原: Recombinant protein of human SNF5

经过测试的应用: WB,IHC-F,IHC-P,ICC/IF,IP

推荐稀释比: WB: 1/500-1/1000 IHC: 1/50-1/100 IF: 1/50-1/200 IP: 1/20

种属反应性: Rabbit

克隆性: Rabbit Monoclonal

克隆编号: R07-5C7

分子量: Calculated MW: 44 kDa; Observed MW: 44 kDa

亚型: IgG

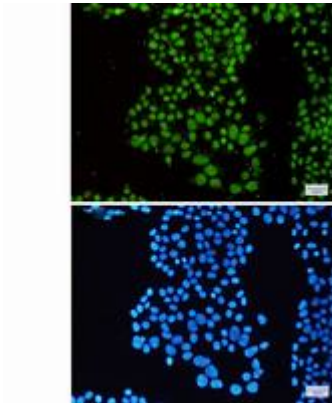
纯化: Affinity Purified

种属反应性: Human,Mouse

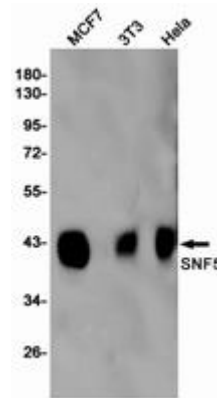
成分: PBS (without Mg²⁺ and Ca²⁺), pH 7.3 containing 50% glycerol, 0.5% BSA and 0.02% sodium azide

研究领域: Epigenetics and Nuclear Signaling

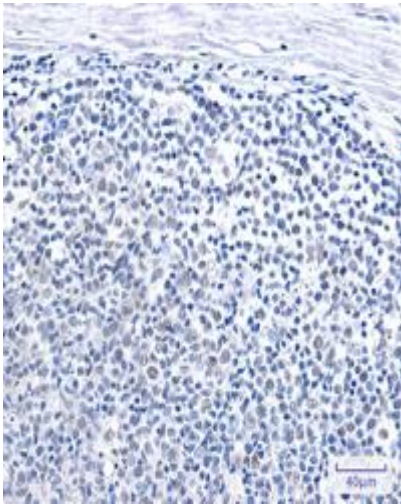
储存和运输: Store at -20°C. Avoid repeated freezing and thawing



Immunocytochemistry analysis of SNF5 (green) in HeLa using SNF5 antibody, and DAPI (blue)



Western blot analysis of SNF5 in MCF-7, 3T3, HeLa lysates using SMARCB1 antibody.



Immunohistochemistry analysis of paraffin-embedded Human tonsil using SNF5 antibody. High-pressure and temperature Sodium Citrate pH 6.0 was used for antigen retrieval.