

## SMARCA1 RABBIT PAB

货号: S221317

产品全名: SMARCA1 兔多抗

基因符号 SWI; ISWI; SWI2; SNF2L; SNF2L1; SNF2LB; SNF2LT; NURF140

**UNIPROT ID:** P28370 (Gene Accession - NP\_003060)

**背景:** This gene encodes a member of the SWI/SNF family of proteins. The encoded protein is an ATPase which is expressed in diverse tissues and contributes to the chromatin remodeling complex that is involved in transcription. The protein may also play a role in DNA damage, growth inhibition and apoptosis of cancer cells. Alternative splicing results in multiple transcript variants.

**抗原:** Synthetic peptide of human SMARCA1

**经过测试的应用:** ELISA, WB, IHC

**推荐稀释比:** IHC: 25-100; WB: 500-2000; ELISA: 5000-10000

**种属反应性:** Rabbit

**克隆性:** Rabbit Polyclonal

**亚型:** Immunogen-specific rabbit IgG

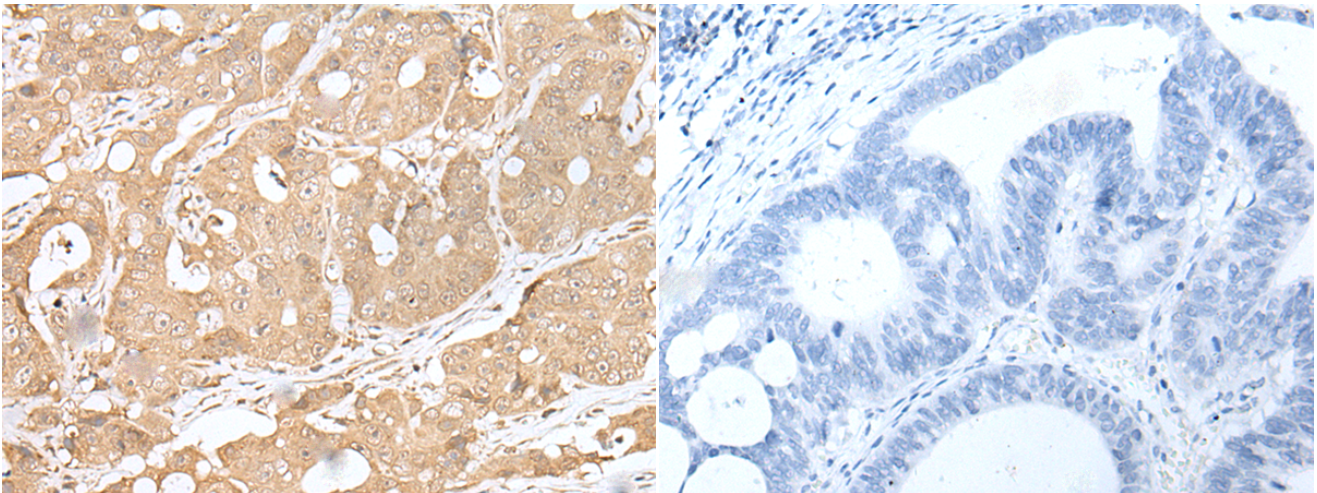
**纯化:** Antigen affinity purification

**种属反应性:** Human, Mouse

**成分:** PBS (without Mg<sup>2+</sup> and Ca<sup>2+</sup>), pH 7.4, 150 mM NaCl, 0.05% Sodium Azide and 40% glycerol

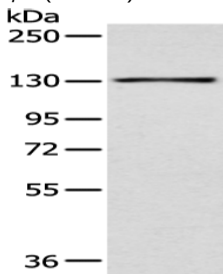
**研究领域:** Epigenetics and Nuclear Signaling

**储存和运输:** Store at -20°C. Avoid repeated freezing and thawing



Immunohistochemistry analysis of paraffin embedded Human gastric cancer tissue using 221317(SMARCA1 Antibody) at a dilution of 1/30(Nucleus).

In comparison with the IHC on the left, the same paraffin-embedded Human gastric cancer tissue is first treated with the synthetic peptide and then with 221317(Anti-SMARCA1 Antibody) at dilution 1/30.



Gel: 6%SDS-PAGE, Lysate: 40 µg;

Lane: 293T cell;

Primary antibody: 221317(SMARCA1 Antibody) at dilution 1/450;

Secondary antibody: Goat anti rabbit IgG at 1/8000 dilution;

Exposure time: 2 minutes