

SMAD2 RABBIT MAB

货号: N262910

产品全名: Smad2 兔单克隆抗体

基因符号 SMAD2; MADH2; MADR2; Mothers against decapentaplegic homolog 2; MAD homolog 2; Mothers against DPP homolog 2; JVI8-1; Mad-related protein 2; hMAD-2; SMAD family member 2; SMAD 2; Smad2; hSMAD2

UNIPROT ID: Q15796

背景: The protein encoded by this gene belongs to the SMAD, a family of proteins similar to the gene products of the Drosophila gene 'mothers against decapentaplegic' (Mad) and the C. elegans gene Sma. SMAD proteins are signal transducers and transcriptional modulators that mediate multiple signaling pathways.

抗原: A synthetic peptide of human Smad2

经过测试的应用: WB,IHC-F,IHC-P,ICC/IF,IP

推荐稀释比: WB: 1/500-1/1000 IHC: 1/50-1/100 IF: 1/50-1/200 IP: 1/20

种属反应性: Rabbit

克隆性: Rabbit Monoclonal

克隆编号: R03-3F8

分子量: Calculated MW: 52 kDa; Observed MW: 52 kDa

亚型: IgG

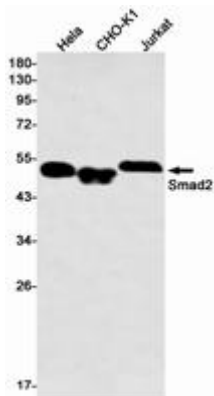
纯化: Affinity Purified

种属反应性: Human,Rat,Hamster

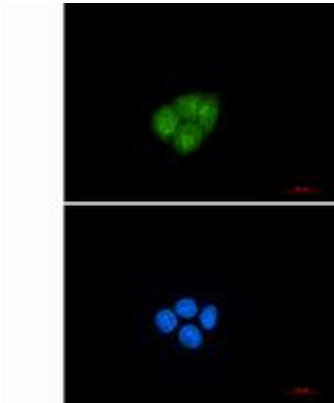
成分: PBS (without Mg²⁺ and Ca²⁺), pH 7.3 containing 50% glycerol, 0.5% BSA and 0.02% sodium azide

研究领域: Signal Transduction

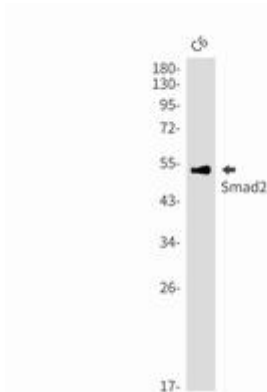
储存和运输: Store at -20°C. Avoid repeated freezing and thawing



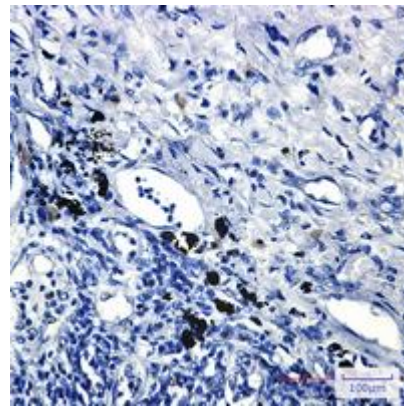
Western blot analysis of Smad2 in HeLa, CHO-K1, Jurkat lysates using Smad2 antibody



Immunocytochemistry analysis of Smad2 (green) in HeLa using Smad2 antibody, and DAPI (blue).



Western blot analysis of Smad2 in C6 lysates using Smad2 antibody.



Immunohistochemistry analysis of paraffin-embedded Human lung cancer using Smad2 antibody. High-pressure and temperature Sodium Citrate pH 6.0 was used for antigen retrieval.