

## SMAD2/3 RABBIT PAB

货号: N226001

产品全名: Smad2/3 兔多抗

基因符号 SMAD2; MADH2; MADR2; Mothers against decapentaplegic homolog 2; MAD homolog 2; Mothers against DPP homolog 2; JVI8-1; Mad-related protein 2; hMAD-2; SMAD family member 2; SMAD 2; Smad2; hSMAD2

**UNIPROT ID:** Q15796

背景: The protein encoded by this gene belongs to the SMAD, a family of proteins similar to the gene products of the Drosophila gene 'mothers against decapentaplegic' (Mad) and the C. elegans gene Sma. SMAD proteins are signal transducers and transcriptional modulators that mediate multiple signaling pathways.

抗原: Recombinant protein of human Smad2

经过测试的应用: WB, ICC/IF, FC, IP, ChIP

推荐稀释比: WB: 1/500-1/1000 IF: 1/50-1/200 IP: 1/20 FC: 1/50-1/100 ChIP: 1/20

种属反应性: Rabbit

克隆性: Rabbit Polyclonal

分子量: Calculated MW: 52 kDa; Observed MW: 52,60 kDa

亚型: IgG

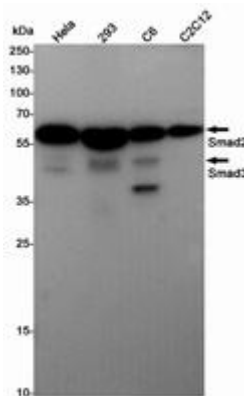
纯化: Affinity Purified

种属反应性: Human, Mouse and Rat

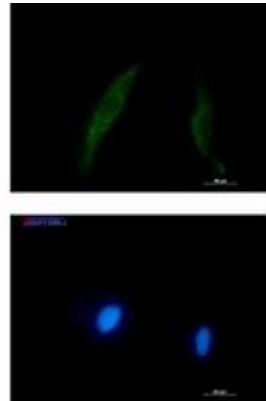
成分: PBS (without Mg<sup>2+</sup> and Ca<sup>2+</sup>), pH 7.3 containing 50% glycerol, 0.5% BSA and 0.02% sodium azide

研究领域: Signal Transduction

储存和运输: Store at -20°C. Avoid repeated freezing and thawing



Western blot analysis of Smad2/3 in Hela, 293, C6, C2C12 lysates using Smad2/3 antibody.



Immunocytochemistry analysis of Smad2/3 (green) in HT-1080 using Smad2/3 antibody, and DAPI (blue).