

SLTM RABBIT PAB

货号: S220947

产品全名: SLTM 兔多抗

基因符号 Met

UNIPROT ID: Q9NWH9 (Gene Accession - NP_079031)

背景: When overexpressed, acts as a general inhibitor of transcription that eventually leads to apoptosis.

抗原: Synthetic peptide of human SLTM

经过测试的应用: ELISA, IHC

推荐稀释比: IHC: 50-100; ELISA: 5000-10000

种属反应性: Rabbit

克隆性: Rabbit Polyclonal

亚型: Immunogen-specific rabbit IgG

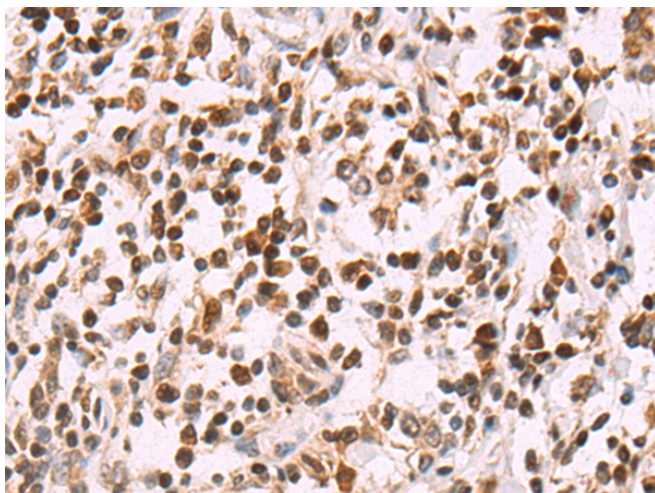
纯化: Antigen affinity purification

种属反应性: Human, Mouse

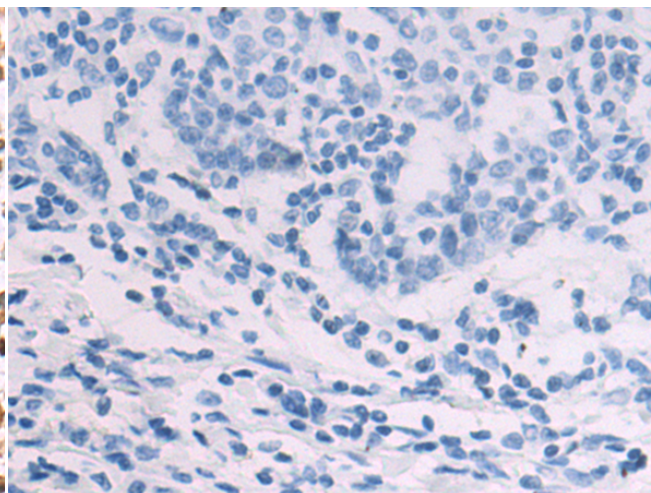
成分: PBS (without Mg²⁺ and Ca²⁺), pH 7.4, 150 mM NaCl, 0.05% Sodium Azide and 40% glycerol

研究领域: Epigenetics and Nuclear Signaling

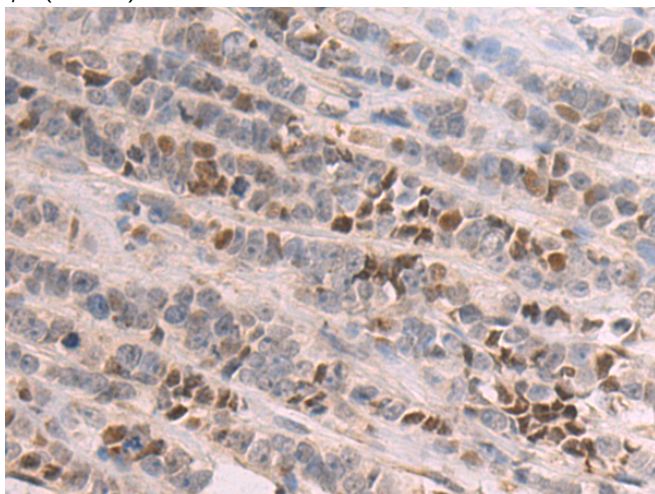
储存和运输: Store at -20°C. Avoid repeated freezing and thawing



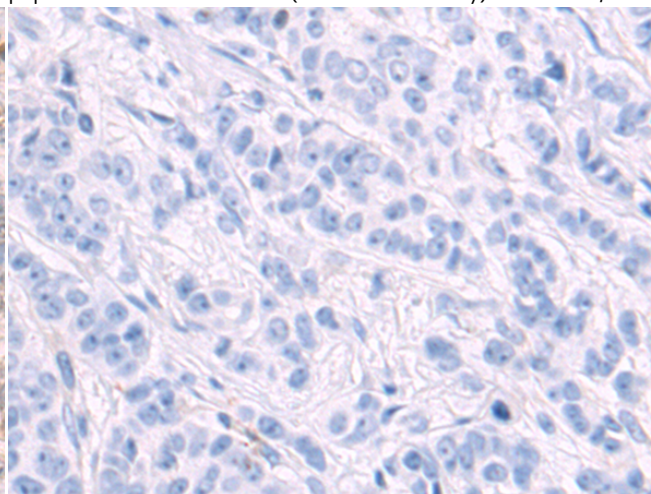
Immunohistochemistry analysis of paraffin embedded Human gastric cancer tissue using 220947(SLTM Antibody) at a dilution of 1/50(Nucleus).



In comparison with the IHC on the left, the same paraffin-embedded Human gastric cancer tissue is first treated with the synthetic peptide and then with 220947(Anti-SLTM Antibody) at dilution 1/50.



The image on the left is immunohistochemistry of paraffin-embedded Human breast cancer tissue using 220947(Anti-SLTM Antibody) at a dilution of 1/50.



In comparison with the IHC on the left, the same paraffin-embedded Human breast cancer tissue is first treated with synthetic peptide and then with D262269(Anti-SLTM Antibody) at dilution 1/50.



Product Description

Pioneering GTPase and Oncogene Product Development since 2010
