

## SLCO5A1 RABBIT MAB

货号: N262908

产品全名: SLCO5A1 兔单克隆抗体

基因符号 OATPJ; OATP-J; OATP5A1; OATPRP4; OATP-RP4; SLC21A15

**UNIPROT ID:** Q9H2Y9

背景: Solute carrier organic anion transporter family member 5A1

抗原: Recombinant protein of human SLCO5A1

经过测试的应用: WB,IHC-P

推荐稀释比: WB: 1/500-1/1000 IHC: 1/50-1/100

种属反应性: Rabbit

克隆性: Rabbit Monoclonal

克隆编号: R02-5J4

分子量: Calculated MW: 92 kDa; Observed MW: 92 kDa

亚型: IgG

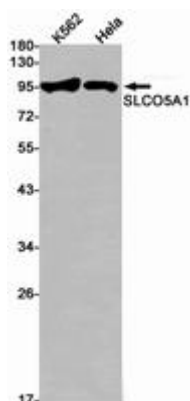
纯化: Affinity Purified

种属反应性: Human,Mouse

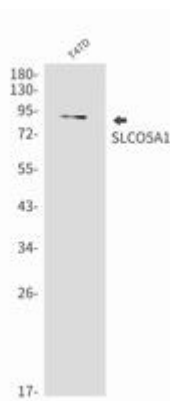
成分: PBS (without Mg<sup>2+</sup> and Ca<sup>2+</sup>), pH 7.3 containing 50% glycerol, 0.5% BSA and 0.02% sodium azide

研究领域: Signal Transduction

储存和运输: Store at -20°C. Avoid repeated freezing and thawing



Western blot analysis of SLCO5A1 in K562, HeLa lysates using SLCO5A1 antibody.



Western blot analysis of SLCO5A1 in T47D lysates using SLCO5A1 antibody.