

SLC9A3 RABBIT PAB

货号: S219791

产品全名: SLC9A3 兔多抗

基因符号: NHE3

UNIPROT ID: P48764 (Gene Accession - NP_004165)

背景: Sodium⁺hydrogen antiporter 3 also known as sodium⁺hydrogen exchanger 3 (NHE3) or solute carrier family 9 member 3 (SLC9A3) is a protein that in humans is encoded by the SLC9A3 gene. SLC9A3 is a sodium⁺hydrogen antiporter. It is found in the nephron of the kidney and in the apical membrane of enterocytes of the intestine. It is primarily responsible for maintaining the balance of sodium. Binds SLC9A3R1 and SLC9A3R2. Interacts with CHP1, CHP2 and SHANK2. Interacts with PDZD3 and interactions decrease in response to elevated calcium ion levels.

抗原: Synthetic peptide of human SLC9A3

经过测试的应用: ELISA, IHC

推荐稀释比: IHC: 25-100; ELISA: 1000-5000

种属反应性: Rabbit

克隆性: Rabbit Polyclonal

亚型: Immunogen-specific rabbit IgG

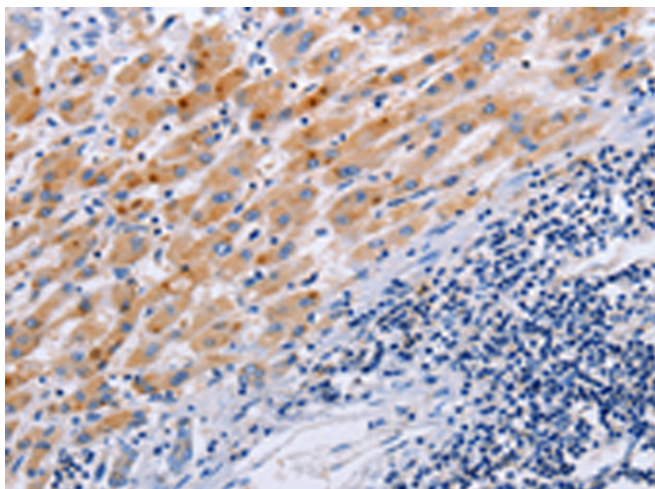
纯化: Antigen affinity purification

种属反应性: Human, Mouse, Rat

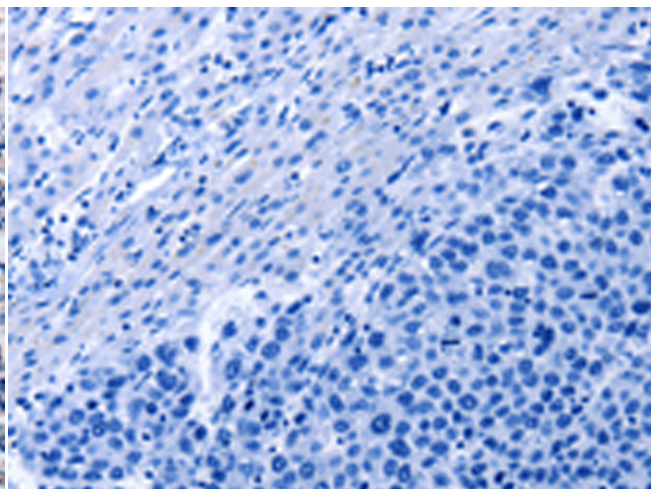
成分: PBS (without Mg²⁺ and Ca²⁺), pH 7.4, 150 mM NaCl, 0.05% Sodium Azide and 40% glycerol

研究领域: Metabolism

储存和运输: Store at -20°C. Avoid repeated freezing and thawing



Immunohistochemistry analysis of paraffin embedded Human liver cancer tissue using 219791(SLC9A3 Antibody) at a dilution of 1/25(Cytoplasm).



In comparison with the IHC on the left, the same paraffin-embedded Human liver cancer tissue is first treated with the synthetic peptide and then with 219791(Anti-SLC9A3 Antibody) at dilution 1/25.