

SLC8A3 RABBIT PAB

货号: S220940

产品全名: SLC8A3 兔多抗

基因符号: NCX3

UNIPROT ID: P57103 (Gene Accession - NP_892114)

背景: This gene encodes a member of the sodium/calcium exchanger integral membrane protein family. Na⁺/Ca²⁺ exchange proteins are involved in maintaining Ca²⁺ homeostasis in a wide variety of cell types. The protein is regulated by intracellular calcium ions and is found in both the plasma membrane and intracellular organellar membranes, where exchange of Na⁺ for Ca²⁺ occurs in an electrogenic manner. Alternative splicing has been observed for this gene and multiple variants have been described.

抗原: Synthetic peptide of human SLC8A3

经过测试的应用: ELISA, IHC

推荐稀释比: IHC: 25-100; ELISA: 1000-2000

种属反应性: Rabbit

克隆性: Rabbit Polyclonal

亚型: Immunogen-specific rabbit IgG

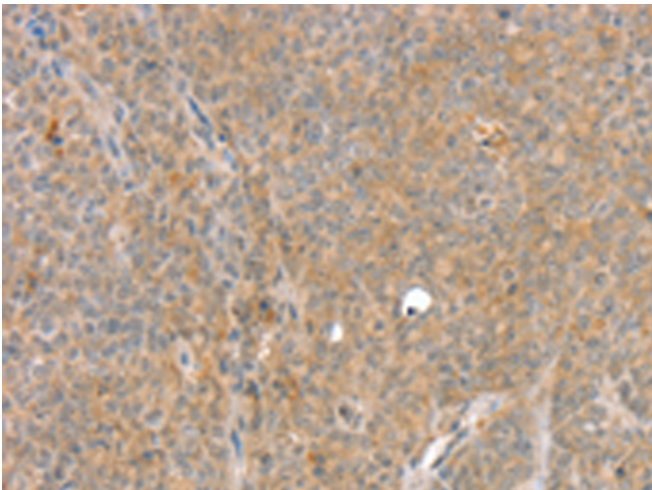
纯化: Antigen affinity purification

种属反应性: Human, Rat

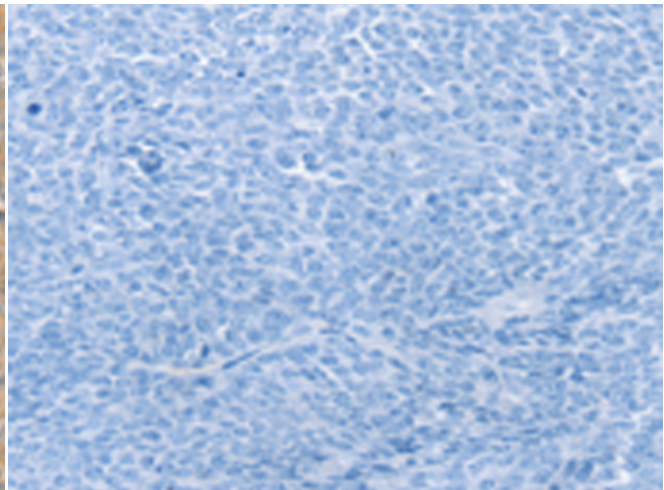
成分: PBS (without Mg²⁺ and Ca²⁺), pH 7.4, 150 mM NaCl, 0.05% Sodium Azide and 40% glycerol

研究领域: Metabolism, Signal Transduction

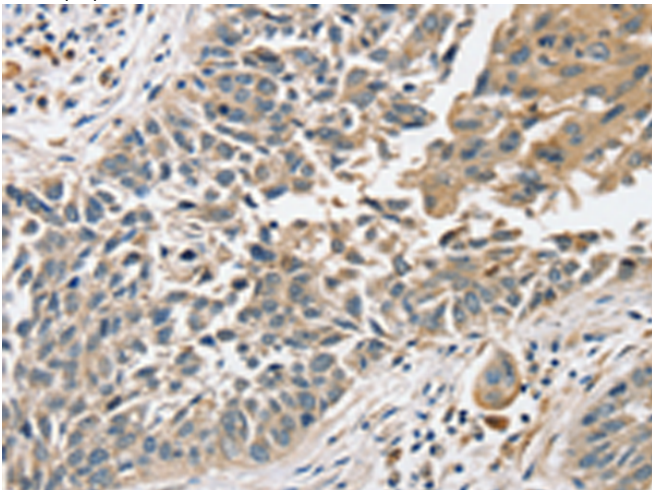
储存和运输: Store at -20°C. Avoid repeated freezing and thawing



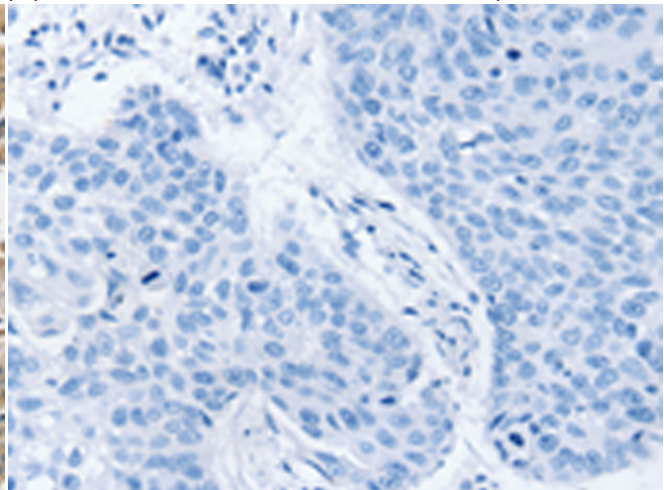
Immunohistochemistry analysis of paraffin embedded Human ovarian cancer tissue using 220940(SLC8A3 Antibody) at a dilution of 1/35(Cytoplasm).



In comparison with the IHC on the left, the same paraffin-embedded Human ovarian cancer tissue is first treated with the synthetic peptide and then with 220940(Anti-SLC8A3 Antibody) at dilution 1/35.



The image on the left is immunohistochemistry of paraffin-embedded Human lung cancer tissue using 220940(Anti-SLC8A3 Antibody) at a dilution of 1/35.



In comparison with the IHC on the left, the same paraffin-embedded Human lung cancer tissue is first treated with synthetic peptide and then with D262256(Anti-SLC8A3 Antibody) at dilution 1/35.



Product Description

Pioneering GTPase and Oncogene Product Development since 2010
