

SLC6A1 RABBIT PAB

货号: S220561

产品全名: SLC6A1 兔多抗

基因符号: GATI; GABATR; GABATHG

UNIPROT ID: P30531 (Gene Accession - NP_003033)

背景: The SLC6A1 gene encodes a gamma-aminobutyric acid (GABA) transporter, which removes GABA from the synaptic cleft. The cDNA contained an open reading frame encoding a hydrophobic protein of 599 amino acids with a calculated molecular weight of 67,022 daltons. Hydropathy analysis showed 12 potential transmembrane segments. The human protein is highly homologous to that from rat brain

抗原: Synthetic peptide of human SLC6A1

经过测试的应用: ELISA, IHC

推荐稀释比: IHC: 25-100; ELISA: 1000-2000

种属反应性: Rabbit

克隆性: Rabbit Polyclonal

亚型: Immunogen-specific rabbit IgG

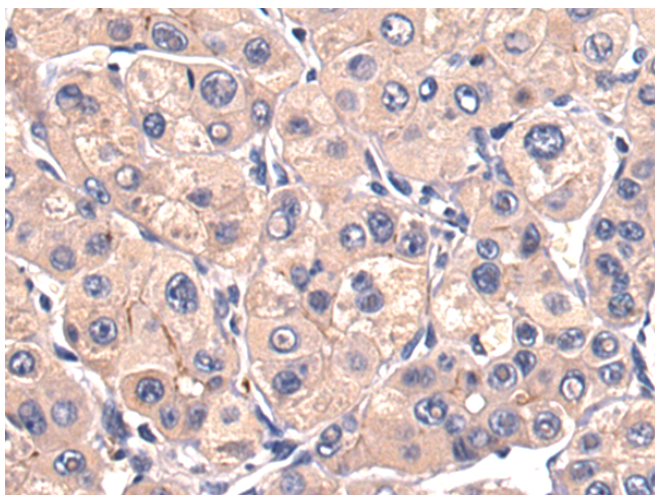
纯化: Antigen affinity purification

种属反应性: Human, Mouse, Rat

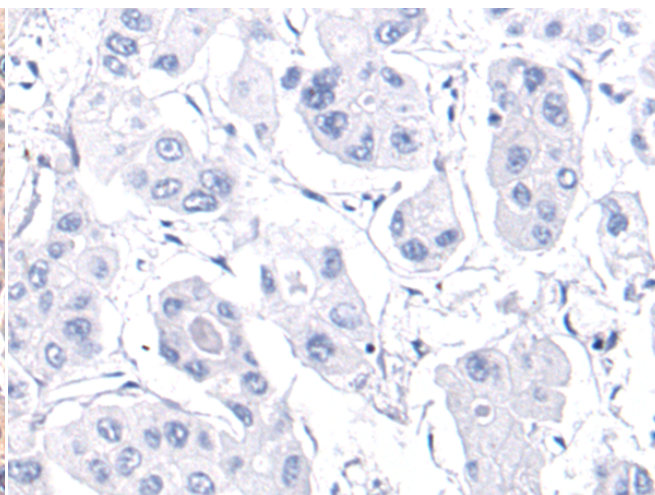
成分: PBS (without Mg²⁺ and Ca²⁺), pH 7.4, 150 mM NaCl, 0.05% Sodium Azide and 40% glycerol

研究领域: Neuroscience

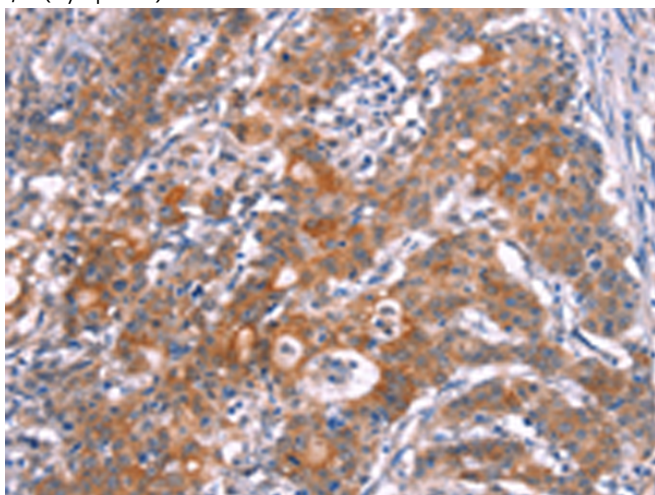
储存和运输: Store at -20°C. Avoid repeated freezing and thawing



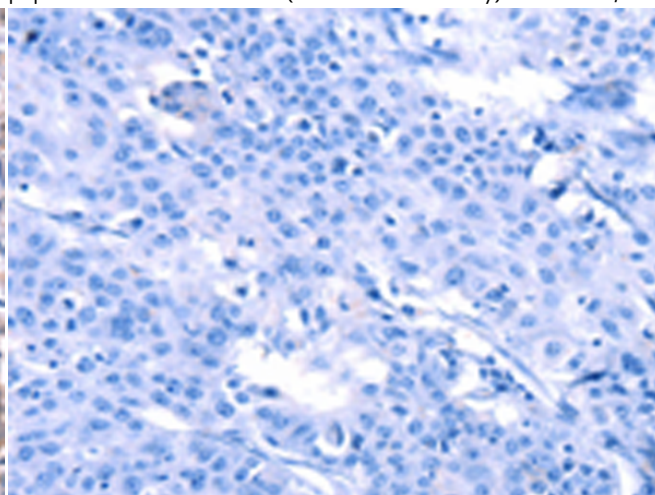
Immunohistochemistry analysis of paraffin embedded Human thyroid cancer tissue using 220561(SLC6A1 Antibody) at a dilution of 1/25(Cytoplasm).



In comparison with the IHC on the left, the same paraffin-embedded Human thyroid cancer tissue is first treated with the synthetic peptide and then with 220561(Anti-SLC6A1 Antibody) at dilution 1/25.



The image on the left is immunohistochemistry of paraffin-embedded Human gastric cancer tissue using 220561(Anti-SLC6A1 Antibody) at a dilution of 1/25.



In comparison with the IHC on the left, the same paraffin-embedded Human gastric cancer tissue is first treated with synthetic peptide and then with D261695(Anti-SLC6A1 Antibody) at dilution 1/25.



Product Description

Pioneering GTPase and Oncogene Product Development since 2010
