

SLC5A6 RABBIT PAB

货号: S214710

产品全名: SLC5A6 兔多抗

基因符号: SMVT

UNIPROT ID: Q9Y289 (Gene Accession - NP_066918)

背景: SLC5A6 is a 635 amino acid protein that belongs to the sodium-coupled glucose transporter family. SMVT contains 12 putative transmembrane domains with the N and C termini both facing towards the cytoplasm. Its function is to transport the essential vitamins pantothenate, biotin, and the metabolite lipoate into cells of various human tissues. Biotin, also known as vitamin B6, is important in synthesizing fatty acids gluconeogenesis, and metabolizing leucine, while pantothenate, or vitamin B5, is critical in the metabolism and synthesis of carbohydrates, proteins, and fats. Lipoate is involved in oxidative metabolism.

抗原: Synthetic peptide of human SLC5A6

经过测试的应用: ELISA, IHC

推荐稀释比: IHC: 25-100; ELISA: 1000-2000

种属反应性: Rabbit

克隆性: Rabbit Polyclonal

亚型: Immunogen-specific rabbit IgG

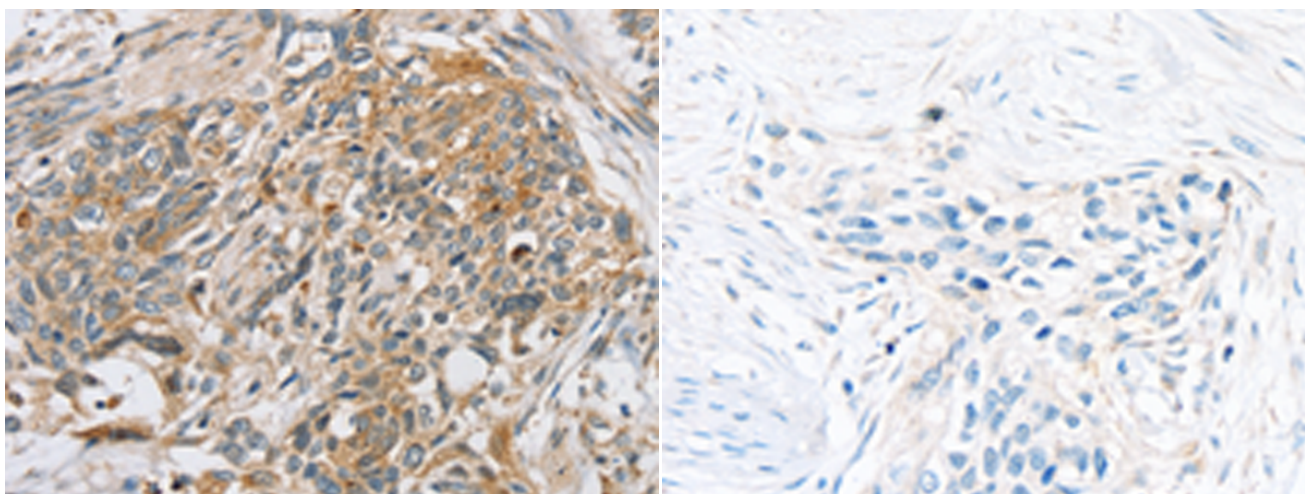
纯化: Antigen affinity purification

种属反应性: Human

成分: PBS (without Mg²⁺ and Ca²⁺), pH 7.4, 150 mM NaCl, 0.05% Sodium Azide and 40% glycerol

研究领域: Metabolism

储存和运输: Store at -20°C. Avoid repeated freezing and thawing



Immunohistochemistry analysis of paraffin embedded Human esophagus cancer tissue using 214710(SLC5A6 Antibody) at a dilution of 1/20(Cytoplasm or Cell membrane).

In comparison with the IHC on the left, the same paraffin-embedded Human esophagus cancer tissue is first treated with the synthetic peptide and then with 214710(Anti-SLC5A6 Antibody) at dilution 1/20.