

## SLC5A11 RABBIT PAB

货号: S220935

产品全名: SLC5A11 兔多抗

基因符号: KST1; RKST1; SGLT6; SMT2

**UNIPROT ID:** Q8WWX8 (Gene Accession - NP\_443176)

背景: Cotransporters, such as SLC5A11, represent a major class of proteins that make use of ion gradients to drive active transport for the cellular accumulation of nutrients, neurotransmitters, osmolytes, and ions Roll et al.

抗原: Synthetic peptide of human SLC5A11

经过测试的应用: ELISA, IHC

推荐稀释比: IHC: 30-150; ELISA: 2000-5000

种属反应性: Rabbit

克隆性: Rabbit Polyclonal

亚型: Immunogen-specific rabbit IgG

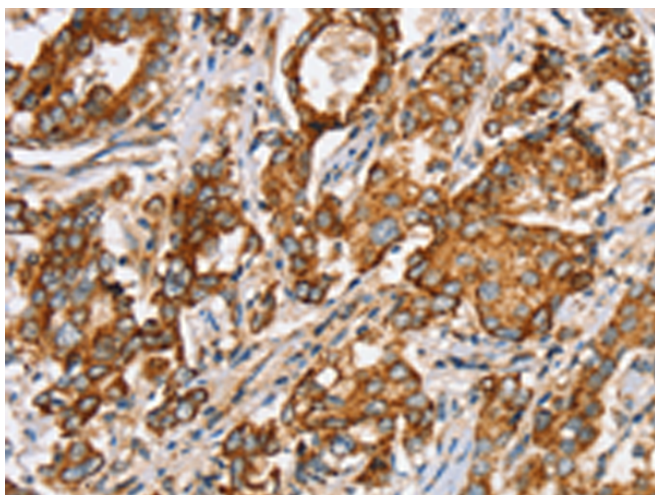
纯化: Antigen affinity purification

种属反应性: Human, Mouse, Rat

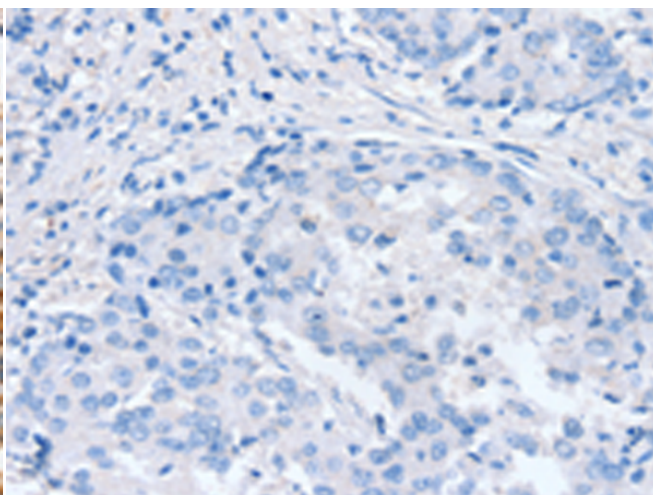
成分: PBS (without Mg<sup>2+</sup> and Ca<sup>2+</sup>), pH 7.4, 150 mM NaCl, 0.05% Sodium Azide and 40% glycerol

研究领域: Metabolism

储存和运输: Store at -20°C. Avoid repeated freezing and thawing



Immunohistochemistry analysis of paraffin embedded Human liver cancer tissue using 220935 (SLC5A11 Antibody) at a dilution of 1/35 (Cytoplasm or Cell membrane).



In comparison with the IHC on the left, the same paraffin-embedded Human liver cancer tissue is first treated with the synthetic peptide and then with 220935 (Anti-SLC5A11 Antibody) at dilution 1/35.