

SLC5A10 RABBIT PAB

货号: S214707

产品全名: SLC5A10 兔多抗

基因符号 SGLT5; SGLT-5

UNIPROT ID: A0PJK1 (Gene Accession - NP_001035915)

背景: This gene is a member of the sodium/glucose transporter family. Members of this family are sodium-dependent transporters and can be divided into two subfamilies based on sequence homology, one that co-transporters sugars and the second that transports molecules such as ascorbate, choline, iodide, lipolate, monocarboxylates, and pantothenate. The protein encoded by this gene has the highest affinity for mannose and has been reported to be most highly expressed in the kidney. This protein may function as a kidney-specific, sodium-dependent mannose and fructose co-transporter. Alternative splicing results in multiple transcript variants that encode different protein isoforms.

抗原: Synthetic peptide of human SLC5A10

经过测试的应用: ELISA, IHC

推荐稀释比: IHC: 20-100; ELISA: 5000-10000

种属反应性: Rabbit

克隆性: Rabbit Polyclonal

亚型: Immunogen-specific rabbit IgG

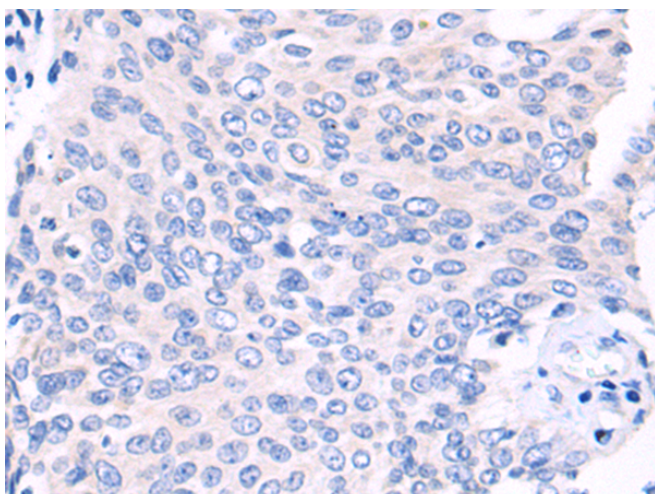
纯化: Antigen affinity purification

种属反应性: Human

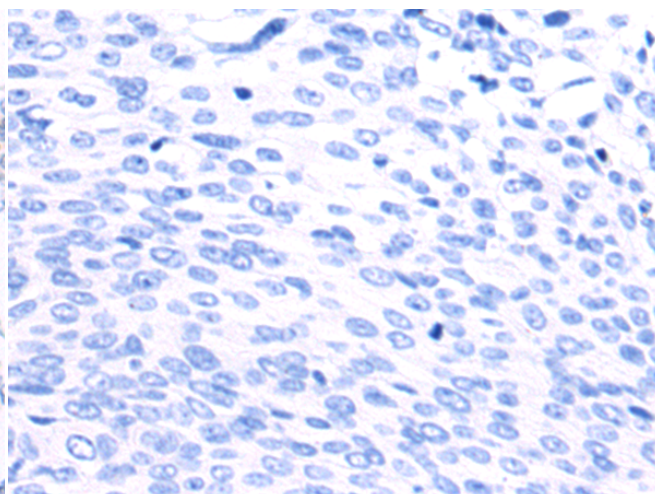
成分: PBS (without Mg²⁺ and Ca²⁺), pH 7.4, 150 mM NaCl, 0.05% Sodium Azide and 40% glycerol

研究领域: Metabolism

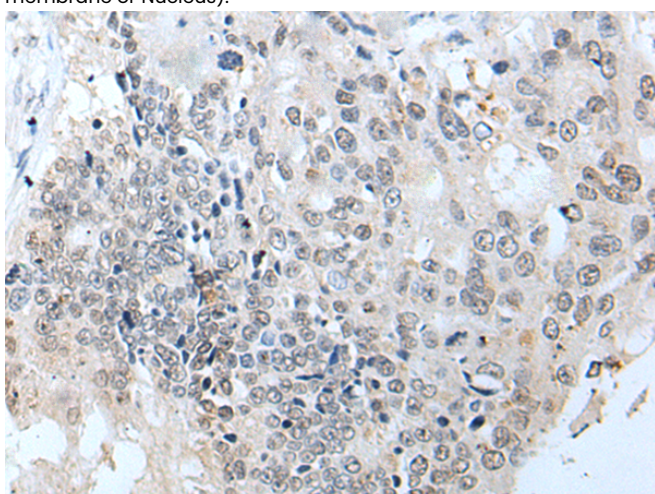
储存和运输: Store at -20°C. Avoid repeated freezing and thawing



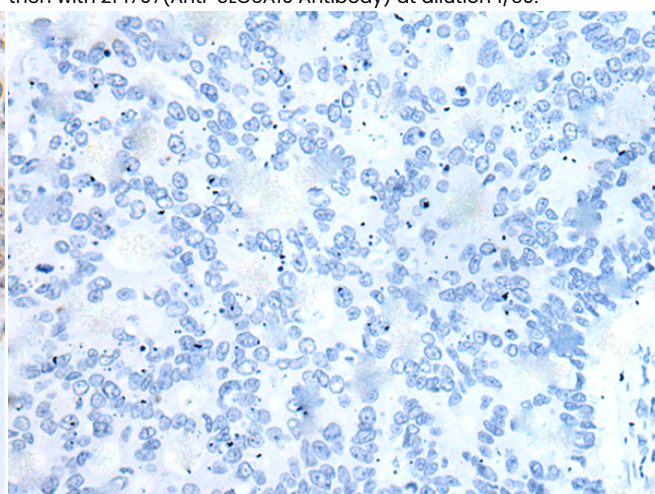
Immunohistochemistry analysis of paraffin embedded Human brain tissue using 214707(SLC5A10 Antibody) at a dilution of 1/30(Cell membrane or Nucleus).



In comparison with the IHC on the left, the same paraffin-embedded Human brain tissue is first treated with the synthetic peptide and then with 214707(Anti-SLC5A10 Antibody) at dilution 1/30.



The image on the left is immunohistochemistry of paraffin-embedded Human colorectal cancer tissue using 214707(Anti-SLC5A10 Antibody) at a dilution of 1/30.



In comparison with the IHC on the left, the same paraffin-embedded Human colorectal cancer tissue is first treated with synthetic peptide and then with D162247(Anti-SLC5A10 Antibody) at dilution 1/30.



Product Description

Pioneering GTPase and Oncogene Product Development since 2010
