

SLC5A1 RABBIT PAB

货号: S220199

产品全名: SLC5A1 兔多抗

基因符号: NAGT; SGLT1; D22S675

UNIPROT ID: P13866 (Gene Accession - NP_000334)

背景: This gene encodes a member of the sodium-dependent glucose transporter (SGLT) family. The encoded integral membrane protein is the primary mediator of dietary glucose and galactose uptake from the intestinal lumen. Mutations in this gene have been associated with glucose-galactose malabsorption. Multiple transcript variants encoding different isoforms have been found for this gene.

抗原: Synthetic peptide of human SLC5A1

经过测试的应用: ELISA, WB, IHC

推荐稀释比: IHC: 50-300;WB: 500-2000;ELISA: 5000-10000

种属反应性: Rabbit

克隆性: Rabbit Polyclonal

亚型: Immunogen-specific rabbit IgG

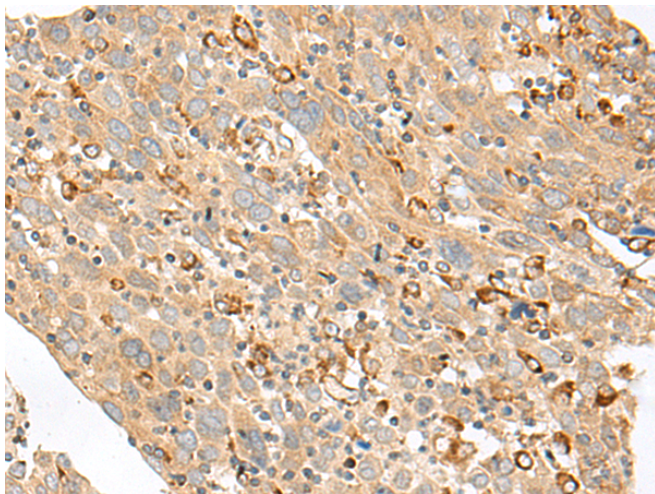
纯化: Antigen affinity purification

种属反应性: Human, Mouse, Rat

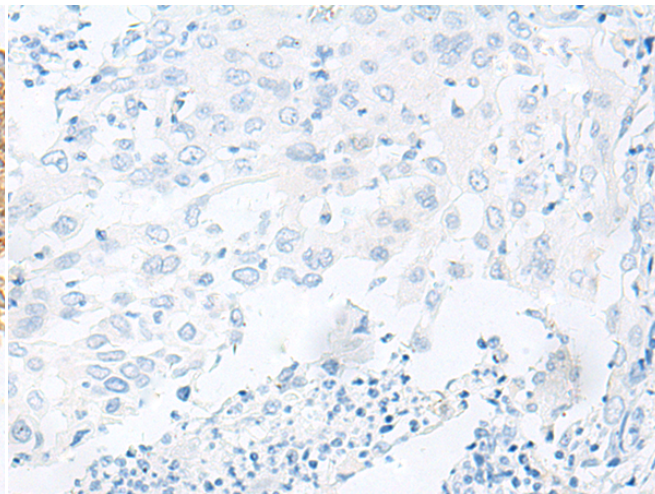
成分: PBS (without Mg²⁺ and Ca²⁺), pH 7.4, 150 mM NaCl, 0.05% Sodium Azide and 40% glycerol

研究领域: Metabolism, Cancer

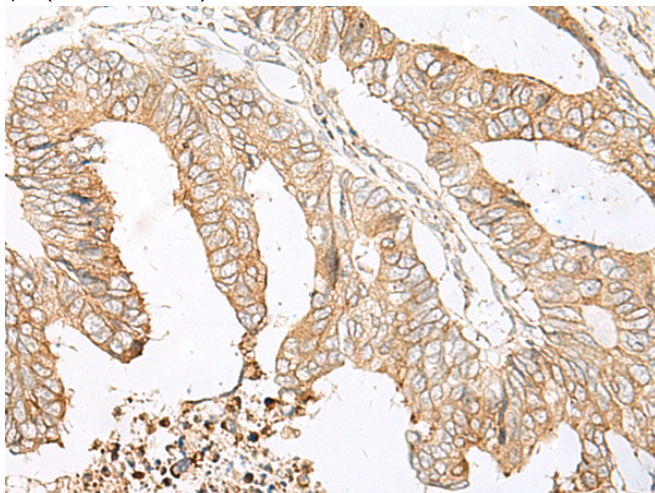
储存和运输: Store at -20°C. Avoid repeated freezing and thawing



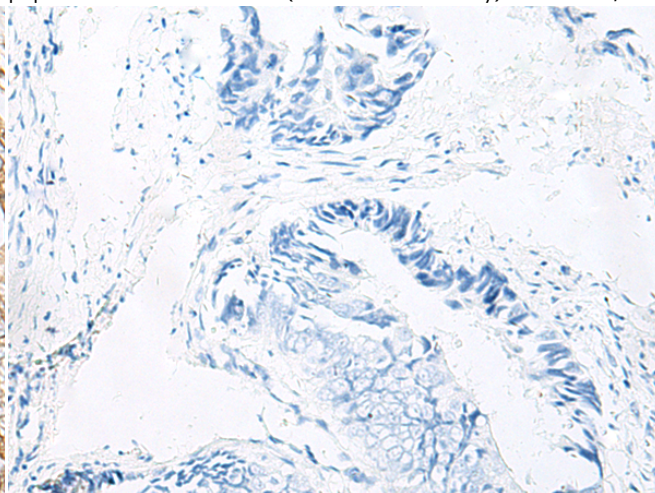
Immunohistochemistry analysis of paraffin embedded Human cervical cancer tissue using 220199(SLC5A1 Antibody) at a dilution of 1/80(Cell membrane).



In comparison with the IHC on the left, the same paraffin-embedded Human cervical cancer tissue is first treated with the synthetic peptide and then with 220199(Anti-SLC5A1 Antibody) at dilution 1/80.

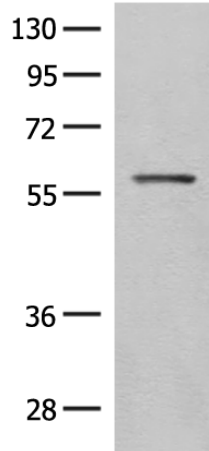


The image on the left is immunohistochemistry of paraffin-embedded Human colorectal cancer tissue using 220199(Anti-SLC5A1 Antibody) at a dilution of 1/80.



In comparison with the IHC on the left, the same paraffin-embedded Human colorectal cancer tissue is first treated with synthetic peptide and then with D261119(Anti-SLC5A1 Antibody) at dilution 1/80.

kDa



Gel: 8%SDS-PAGE, Lysate: 40 µg;
Lane: Mouse eye tissue lysate ;
Primary antibody: 220199(SLC5A1 Antibody) at dilution 1/500;
Secondary antibody: Goat anti rabbit IgG at 1/8000 dilution;
Exposure time: 30 seconds



Product Description

Pioneering GTPase and Oncogene Product Development since 2010
