

## SLC47A1 RABBIT PAB

货号: S216147

产品全名: SLC47A1 兔多抗

基因符号 MATE1

**UNIPROT ID:** Q96FL8 (Gene Accession - NP\_060712 )

**背景:** Solute transporter for tetraethylammonium (TEA), 1-methyl-4-phenylpyridinium (MPP), cimetidine, N-methylnicotinamide (NMN), metformin, creatinine, guanidine, procainamide, topotecan, estrone sulfate, acyclovir, ganciclovir and also the zwitterionic cephalosporin, cephalexin and cephradine. Seems to also play a role in the uptake of oxaliplatin (a new platinum anticancer agent). Able to transport paraquat (PQ or N,N-dimethyl-4,4'-bipyridinium); a widely used herbicide. Responsible for the secretion of cationic drugs across the brush border membranes. This gene is located within the Smith-Magenis syndrome region on chromosome 17.

**抗原:** Synthetic peptide of human SLC47A1

**经过测试的应用:** ELISA, WB, IHC

**推荐稀释比:** IHC: 25-50;WB: 500-2000;ELISA: 5000-10000

**种属反应性:** Rabbit

**克隆性:** Rabbit Polyclonal

**亚型:** Immunogen-specific rabbit IgG

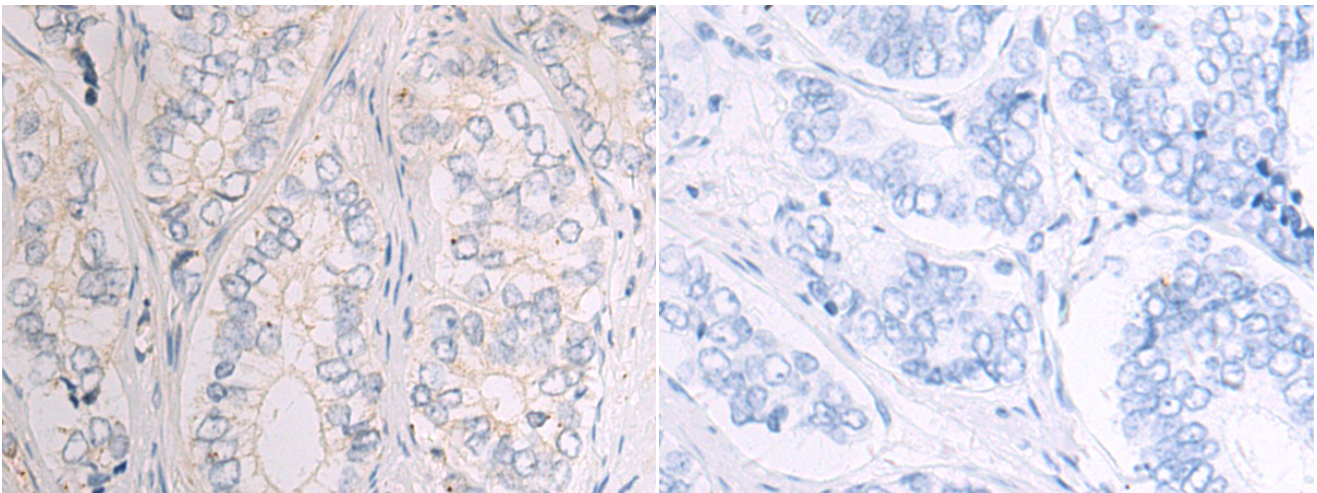
**纯化:** Antigen affinity purification

**种属反应性:** Human

**成分:** PBS (without Mg<sup>2+</sup> and Ca<sup>2+</sup>), pH 7.4, 150 mM NaCl, 0.05% Sodium Azide and 40% glycerol

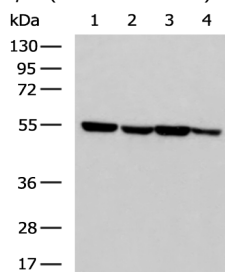
**研究领域:** Signal Transduction, Metabolism

**储存和运输:** Store at -20°C. Avoid repeated freezing and thawing



Immunohistochemistry analysis of paraffin embedded Human prostate cancer tissue using 216147(SLC47A1 Antibody) at a dilution of 1/50(Cell membrane).

In comparison with the IHC on the left, the same paraffin-embedded Human prostate cancer tissue is first treated with the synthetic peptide and then with 216147(Anti-SLC47A1 Antibody) at dilution 1/50.



Gel: 8%SDS-PAGE, Lysate: 40 µg;

Lane 1-4: 293T, HeLa, HepG2, A549 cell lysates;

Primary antibody: 216147(SLC47A1 Antibody) at dilution 1/400;

Secondary antibody: HRP-conjugated Goat anti rabbit IgG at 1/5000 dilution;

Exposure time: 10 seconds