

SLC44A1 RABBIT PAB

货号: S214704

产品全名: SLC44A1 兔多抗

基因符号: CD92; CTL1; CDW92; CHTL1

UNIPROT ID: Q8WWI5 (Gene Accession - NP_536856)

背景: CD92, also known as SLC44A1 (solute carrier family 44, member 1), CDW92 or CTL1 (choline transporter-like protein 1), is a 657 amino acid multi-pass membrane protein that belongs to the choline transporter-like family of solute carrier proteins. Expressed in cells that are associated with the hematopoietic system, CD92 functions as a choline transporter that may be involved in myelin production, as well as in membrane synthesis. Human CD92 shares 96% sequence homology with its mouse counterpart, suggesting a conserved role between species. Three isoforms of CD92 exist due to alternative splicing events.

抗原: Synthetic peptide of human SLC44A1

经过测试的应用: ELISA, IHC

推荐稀释比: IHC: 25-100; ELISA: 1000-2000

种属反应性: Rabbit

克隆性: Rabbit Polyclonal

亚型: Immunogen-specific rabbit IgG

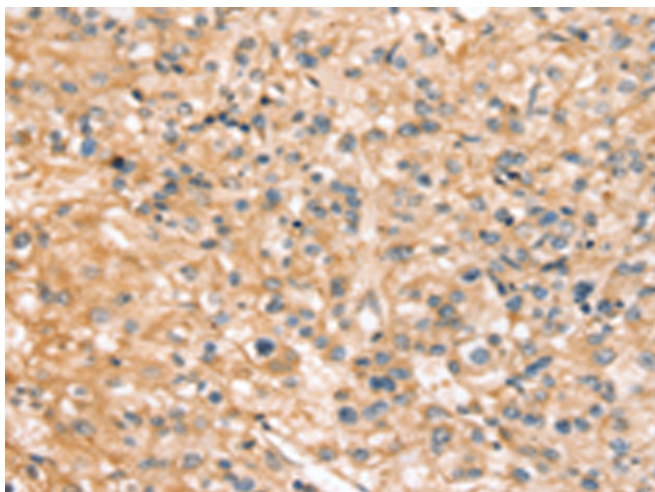
纯化: Antigen affinity purification

种属反应性: Human, Mouse, Rat

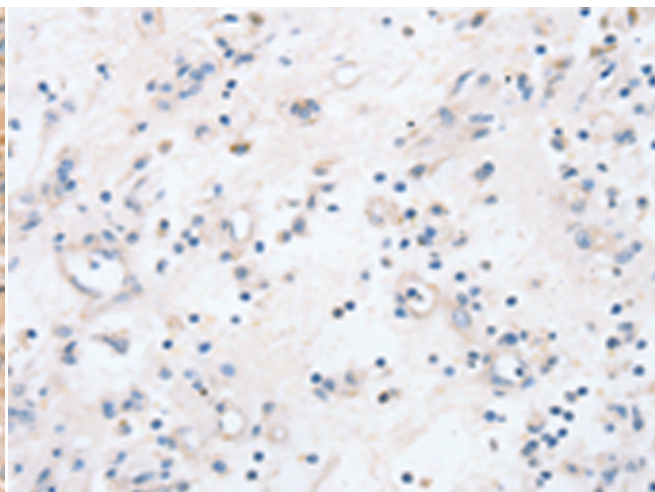
成分: PBS (without Mg²⁺ and Ca²⁺), pH 7.4, 150 mM NaCl, 0.05% Sodium Azide and 40% glycerol

研究领域: Metabolism

储存和运输: Store at -20°C. Avoid repeated freezing and thawing



Immunohistochemistry analysis of paraffin embedded Human prostate cancer tissue using 214704 (SLC44A1 Antibody) at a dilution of 1/20 (Cytoplasm or Cell membrane).



In comparison with the IHC on the left, the same paraffin-embedded Human prostate cancer tissue is first treated with the synthetic peptide and then with 214704 (Anti-SLC44A1 Antibody) at dilution 1/20.