

SLC41A3 RABBIT PAB

货号: S215834

产品全名: SLC41A3 兔多抗

基因符号: SLC41A1-L2

UNIPROT ID: Q96GZ6 (Gene Accession - NP_001008485)

背景: SLC41A3 (solute carrier family 41 member 3) is a 507 amino acid multi-pass membrane protein that belongs to the SLC41A transporter family that includes SLC41A1 and SLC41A2. Localizing to the cell membrane, SLC41A3 contains ten transmembrane domains and is believed to function as a plasma-membrane cation transporter. Its other two family members, SLC41A1 and SLC41A2, have been characterized to function as magnesium transporters and are essential for maintaining magnesium homeostasis within the cell.

抗原: Synthetic peptide of human SLC41A3

经过测试的应用: ELISA, IHC

推荐稀释比: IHC: 30-150; ELISA: 5000-10000

种属反应性: Rabbit

克隆性: Rabbit Polyclonal

亚型: Immunogen-specific rabbit IgG

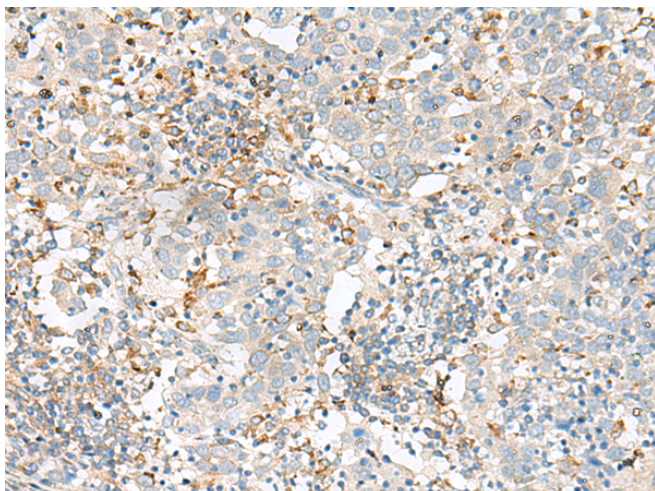
纯化: Antigen affinity purification

种属反应性: Human

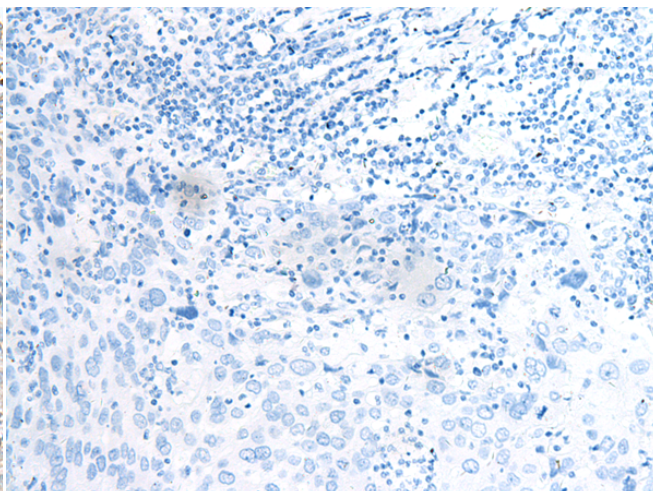
成分: PBS (without Mg²⁺ and Ca²⁺), pH 7.4, 150 mM NaCl, 0.05% Sodium Azide and 40% glycerol

研究领域: Metabolism, Signal Transduction

储存和运输: Store at -20°C. Avoid repeated freezing and thawing



Immunohistochemistry analysis of paraffin embedded Human cervical cancer tissue using 215834 (SLC41A3 Antibody) at a dilution of 1/35 (Cytoplasm).



In comparison with the IHC on the left, the same paraffin-embedded Human cervical cancer tissue is first treated with the synthetic peptide and then with 215834 (Anti-SLC41A3 Antibody) at dilution 1/35.