

SLC40A1 RABBIT PAB

货号: S222031

产品全名: SLC40A1 兔多抗

基因符号: FPNI; HFE4; MTP1; IREG1; MST079; MSTP079; SLC11A3

UNIPROT ID: Q9NP59 (Gene Accession - NP_055400)

背景: The protein encoded by this gene is a cell membrane protein that may be involved in iron export from duodenal epithelial cells. Defects in this gene are a cause of hemochromatosis type 4 (HFE4).

抗原: Synthetic peptide of human SLC40A1

经过测试的应用: ELISA, IHC

推荐稀释比: IHC: 50-300; ELISA: 5000-10000

种属反应性: Rabbit

克隆性: Rabbit Polyclonal

亚型: Immunogen-specific rabbit IgG

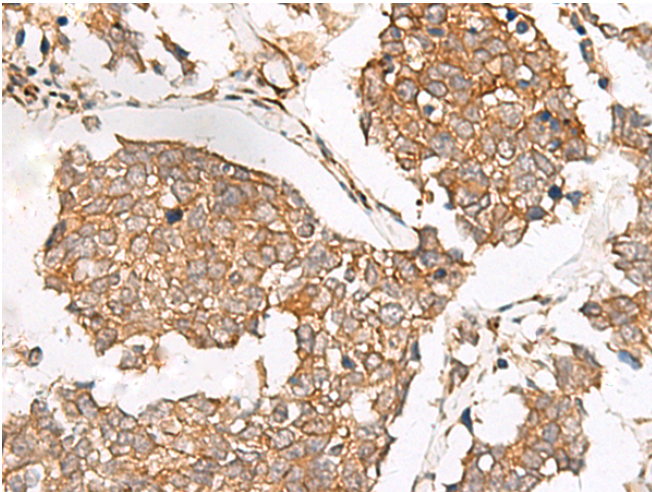
纯化: Antigen affinity purification

种属反应性: Human

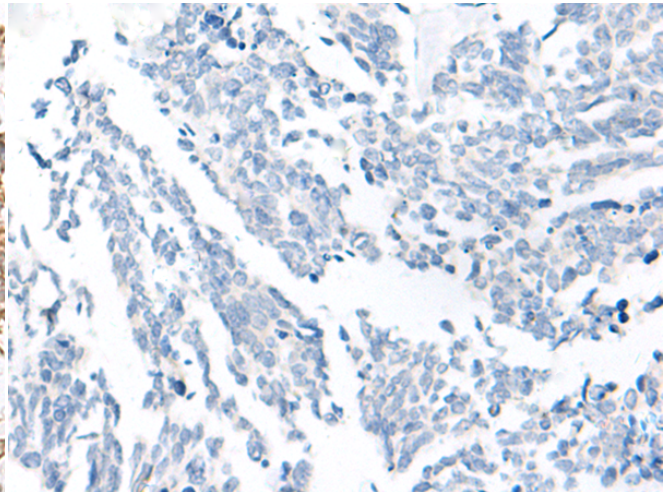
成分: PBS (without Mg²⁺ and Ca²⁺), pH 7.4, 150 mM NaCl, 0.05% Sodium Azide and 40% glycerol

研究领域: Metabolism

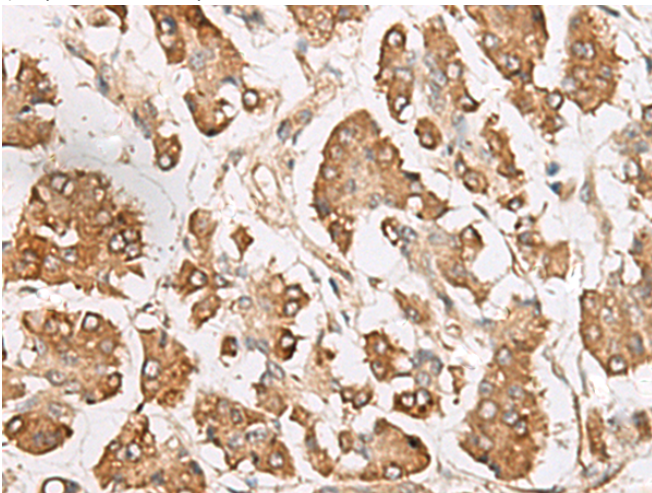
储存和运输: Store at -20°C. Avoid repeated freezing and thawing



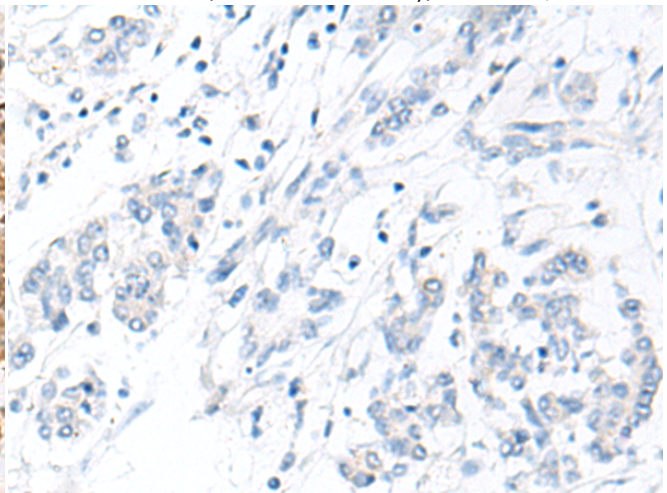
Immunohistochemistry analysis of paraffin embedded Human lung cancer tissue using 222031(SLC40A1 Antibody) at a dilution of 1/65(Cell membrane).



In comparison with the IHC on the left, the same paraffin-embedded Human lung cancer tissue is first treated with the synthetic peptide and then with 222031(Anti-SLC40A1 Antibody) at dilution 1/65.



The image on the left is immunohistochemistry of paraffin-embedded Human gastric cancer tissue using 222031(Anti-SLC40A1 Antibody) at a dilution of 1/65.



In comparison with the IHC on the left, the same paraffin-embedded Human gastric cancer tissue is first treated with synthetic peptide and then with D263909(Anti-SLC40A1 Antibody) at dilution 1/65.



Product Description

Pioneering GTPase and Oncogene Product Development since 2010
