

SLC35F6 RABBIT PAB

货号: S219359

产品全名: SLC35F6 兔多抗

基因符号: ANT2BP; TANGO9; C2orf18

UNIPROT ID: Q8N357 (Gene Accession - BC028081)

背景: Involved in the maintenance of mitochondrial membrane potential in pancreatic ductal adenocarcinoma (PDAC) cells. Promotes pancreatic ductal adenocarcinoma (PDAC) cell growth. May play a role as a nucleotide-sugar transporter.

抗原: Fusion protein of human SLC35F6

经过测试的应用: ELISA, IHC

推荐稀释比: IHC: 100-300; ELISA: 5000-10000

种属反应性: Rabbit

克隆性: Rabbit Polyclonal

亚型: Immunogen-specific rabbit IgG

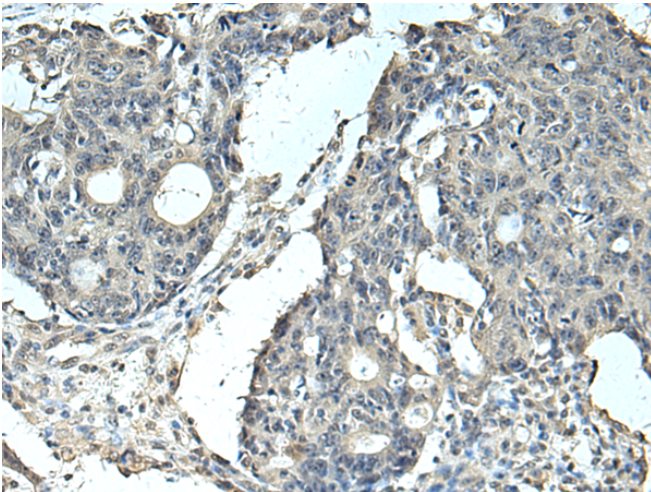
纯化: Antigen affinity purification

种属反应性: Human, Mouse, Rat

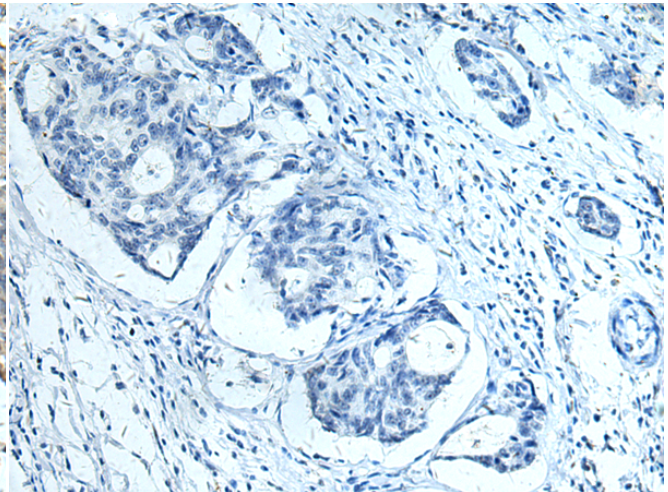
成分: PBS (without Mg²⁺ and Ca²⁺), pH 7.4, 150 mM NaCl, 0.05% Sodium Azide and 40% glycerol

研究领域: Cancer

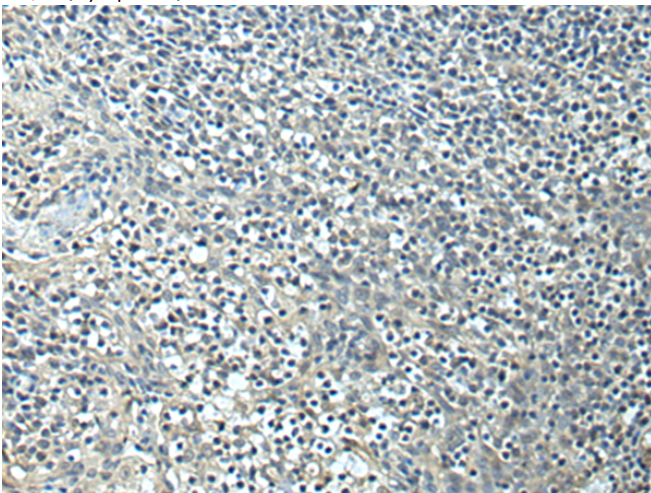
储存和运输: Store at -20°C. Avoid repeated freezing and thawing



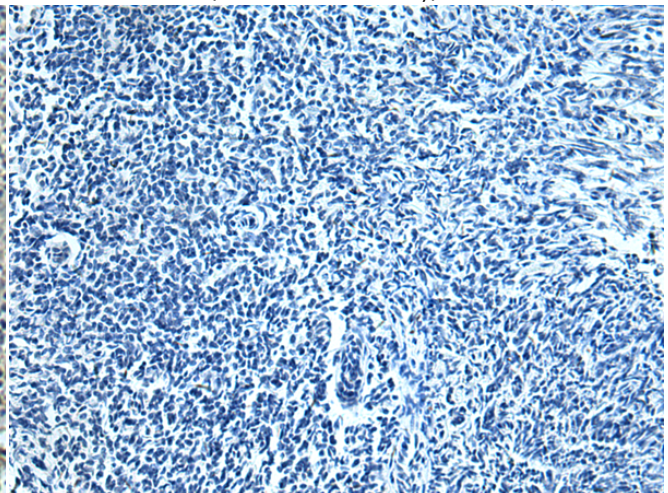
Immunohistochemistry analysis of paraffin embedded Human colorectal cancer tissue using 219359(SLC35F6 Antibody) at a dilution of 1/95(Cytoplasm).



In comparison with the IHC on the left, the same paraffin-embedded Human colorectal cancer tissue is first treated with the fusion protein and then with 219359(Anti-SLC35F6 Antibody) at dilution 1/95.



The image on the left is immunohistochemistry of paraffin-embedded Human tonsil tissue using 219359(Anti-SLC35F6 Antibody) at a dilution of 1/95.



In comparison with the IHC on the left, the same paraffin-embedded Human tonsil tissue is first treated with fusion protein and then with D226533(Anti-SLC35F6 Antibody) at dilution 1/95.



Product Description

Pioneering GTPase and Oncogene Product Development since 2010
