

SLC35E2A RABBIT PAB

货号: S218107

产品全名: SLC35E2A 兔多抗

基因符号: SLC35E2

UNIPROT ID: P0CK97 (Gene Accession - BC112289)

背景: Putative transporter.

抗原: Fusion protein of human SLC35E2A

经过测试的应用: ELISA, IHC

推荐稀释比: IHC: 25-100; ELISA: 5000-10000

种属反应性: Rabbit

克隆性: Rabbit Polyclonal

亚型: Immunogen-specific rabbit IgG

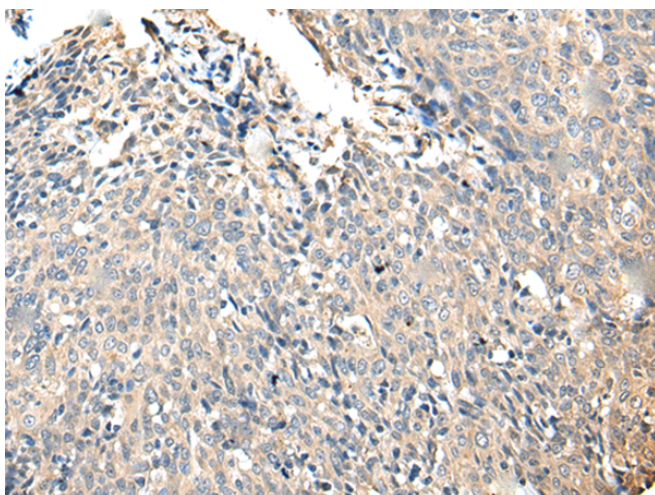
纯化: Antigen affinity purification

种属反应性: Human

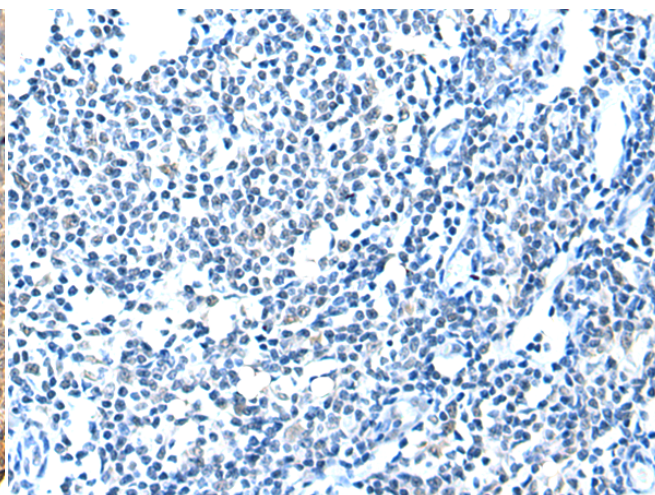
成分: PBS (without Mg²⁺ and Ca²⁺), pH 7.4, 150 mM NaCl, 0.05% Sodium Azide and 40% glycerol

研究领域: Metabolism

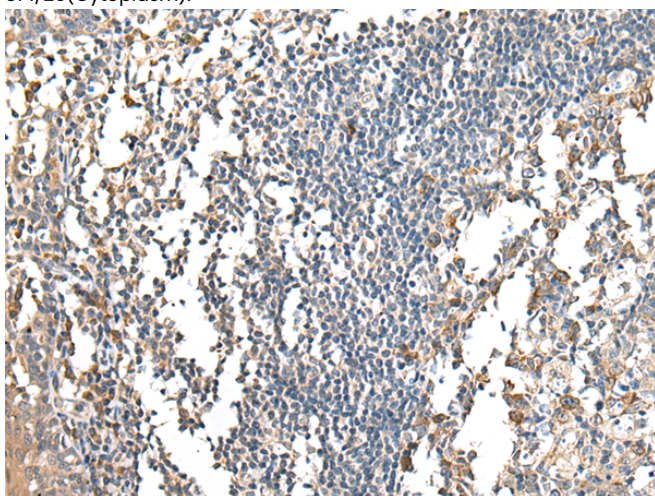
储存和运输: Store at -20°C. Avoid repeated freezing and thawing



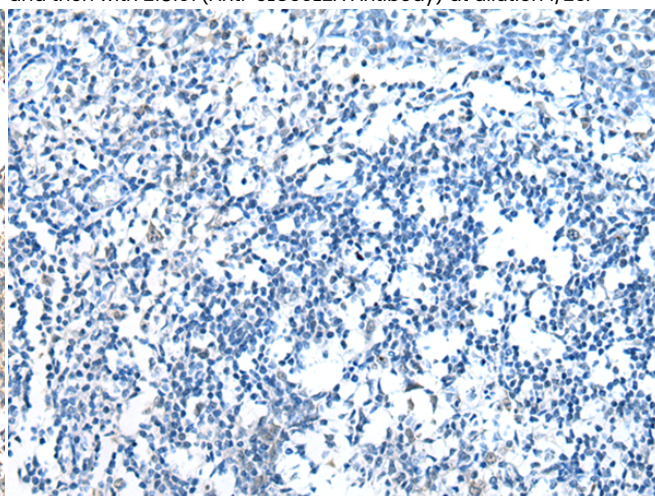
Immunohistochemistry analysis of paraffin embedded Human cervical cancer tissue using 218107(SLC35E2A Antibody) at a dilution of 1/25(Cytoplasm).



In comparison with the IHC on the left, the same paraffin-embedded Human cervical cancer tissue is first treated with the fusion protein and then with 218107(Anti-SLC35E2A Antibody) at dilution 1/25.



The image on the left is immunohistochemistry of paraffin-embedded Human tonsil tissue using 218107(Anti-SLC35E2A Antibody) at a dilution of 1/25.



In comparison with the IHC on the left, the same paraffin-embedded Human tonsil tissue is first treated with fusion protein and then with D223725(Anti-SLC35E2A Antibody) at dilution 1/25.



Product Description

Pioneering GTPase and Oncogene Product Development since 2010
