

SLC35B1 RABBIT PAB

货号: S222385

产品全名: SLC35B1 兔多抗

基因符号: AXER; UGTREL1

UNIPROT ID: P78383 (Gene Accession - NP_005818)

背景: This gene encodes a nucleotide sugar transporter which is a member of solute carrier family 35. The transporters in this family are highly conserved hydrophobic proteins with multiple transmembrane domains. Alternative splicing results in multiple transcript variants encoding different isoforms.

抗原: Synthetic peptide of human SLC35B1

经过测试的应用: ELISA, IHC

推荐稀释比: IHC: 50-200; ELISA: 5000-10000

种属反应性: Rabbit

克隆性: Rabbit Polyclonal

亚型: Immunogen-specific rabbit IgG

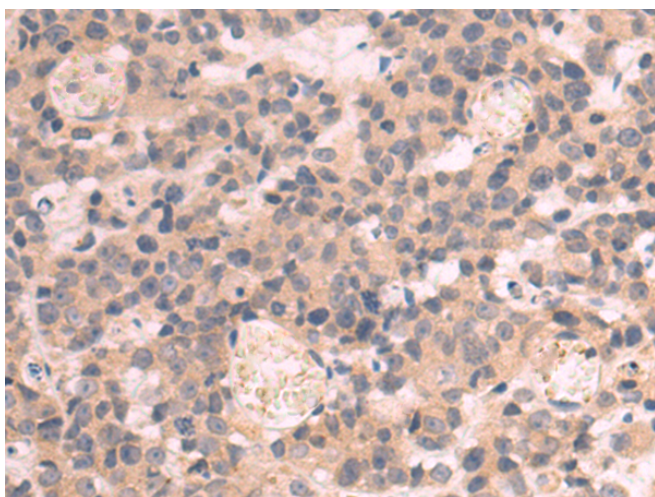
纯化: Antigen affinity purification

种属反应性: Human, Mouse, Rat

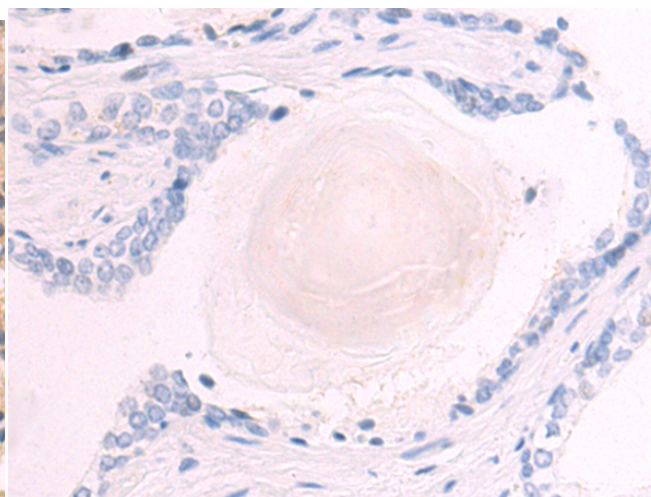
成分: PBS (without Mg²⁺ and Ca²⁺), pH 7.4, 150 mM NaCl, 0.05% Sodium Azide and 40% glycerol

研究领域: Signal Transduction, Metabolism

储存和运输: Store at -20°C. Avoid repeated freezing and thawing



Immunohistochemistry analysis of paraffin embedded Human prostate cancer tissue using 222385(SLC35B1 Antibody) at a dilution of 1/60(Cytoplasm).



In comparison with the IHC on the left, the same paraffin-embedded Human prostate cancer tissue is first treated with the synthetic peptide and then with 222385(Anti-SLC35B1 Antibody) at dilution 1/60.