

SLC32A1 RABBIT PAB

货号: S220927

产品全名: SLC32A1 兔多抗

基因符号: VGAT; VIAAT

UNIPROT ID: Q9H598 (Gene Accession - NP_542119)

背景: The protein encoded by this gene is an integral membrane protein involved in gamma-aminobutyric acid (GABA) and glycine uptake into synaptic vesicles. The encoded protein is a member of amino acid/polyamine transporter family II.

抗原: Synthetic peptide of human SLC32A1

经过测试的应用: ELISA, IHC

推荐稀释比: IHC: 25-100; ELISA: 1000-2000

种属反应性: Rabbit

克隆性: Rabbit Polyclonal

亚型: Immunogen-specific rabbit IgG

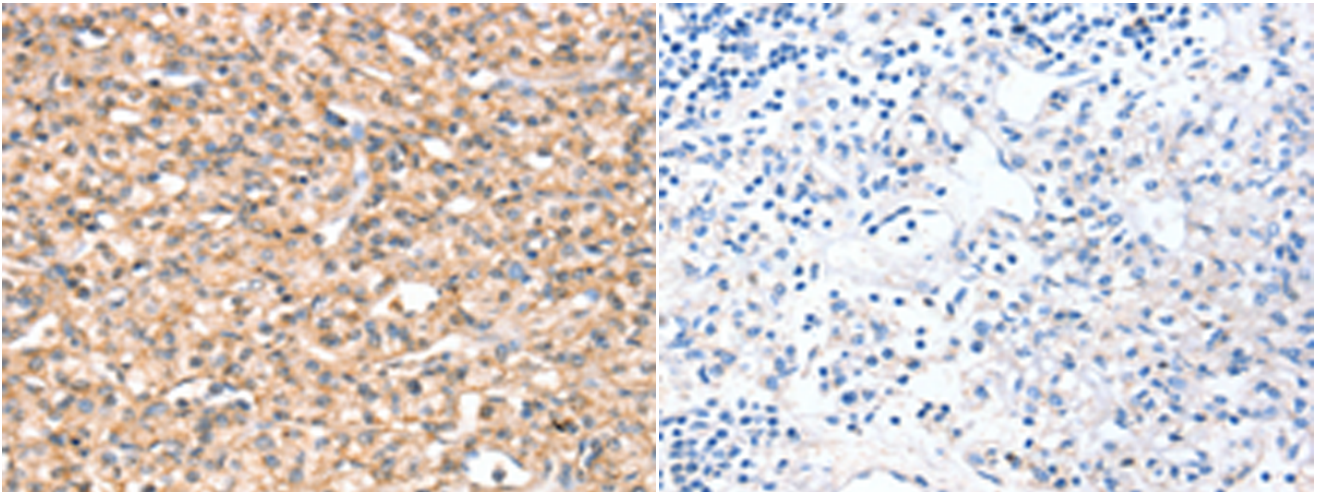
纯化: Antigen affinity purification

种属反应性: Human, Mouse, Rat

成分: PBS (without Mg²⁺ and Ca²⁺), pH 7.4, 150 mM NaCl, 0.05% Sodium Azide and 40% glycerol

研究领域: Neuroscience

储存和运输: Store at -20°C. Avoid repeated freezing and thawing



Immunohistochemistry analysis of paraffin embedded Human prostate cancer tissue using 220927(SLC32A1 Antibody) at a dilution of 1/20(Cytoplasm or Cell membrane).

In comparison with the IHC on the left, the same paraffin-embedded Human prostate cancer tissue is first treated with the synthetic peptide and then with 220927(Anti-SLC32A1 Antibody) at dilution 1/20.