

SLC2A6 RABBIT PAB

货号: S215012

产品全名: SLC2A6 兔多抗

基因符号: GLUT6; GLUT9; HSA011372

UNIPROT ID: Q9UGQ3 (Gene Accession - NP_060055)

背景: Members of the Glut family may enhance the metabolic activity of tumor cells. Glut6 is part of the third out of three classes of Gluts. Glut6 is mainly expressed in the brain, spleen and peripheral leukocytes. It appears to be regulated by subcellular redistribution, because it is targeted to intracellular compartments by di-leucine motifs, recycling itself in a Dynamin-dependent manner.

抗原: Synthetic peptide of human SLC2A6

经过测试的应用: ELISA, WB, IHC

推荐稀释比: IHC: 25-100;WB: 200-1000;ELISA: 5000-10000

种属反应性: Rabbit

克隆性: Rabbit Polyclonal

亚型: Immunogen-specific rabbit IgG

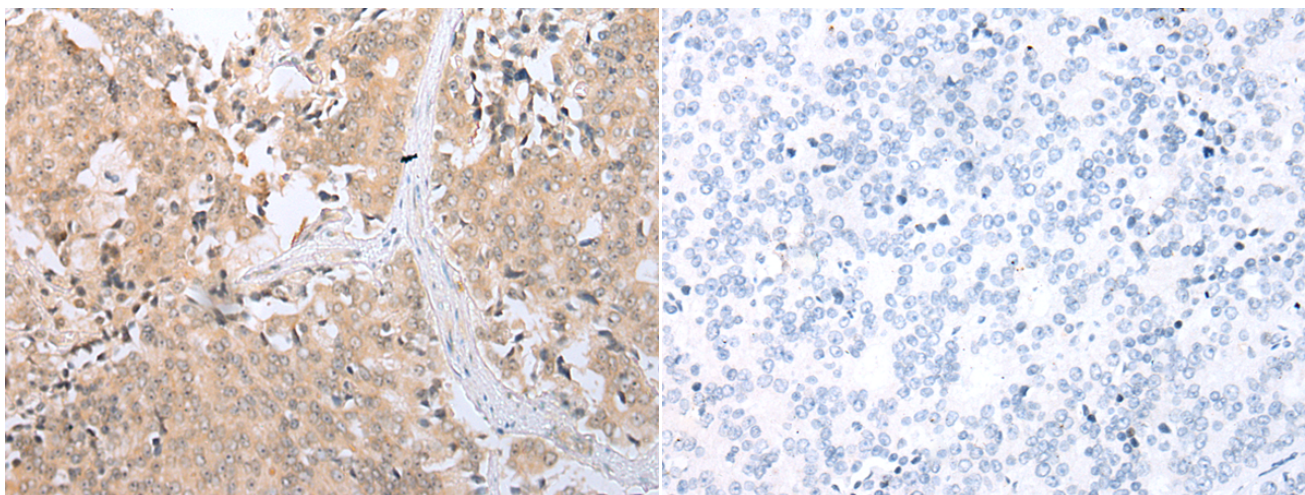
纯化: Antigen affinity purification

种属反应性: Human

成分: PBS (without Mg²⁺ and Ca²⁺), pH 7.4, 150 mM NaCl, 0.05% Sodium Azide and 40% glycerol

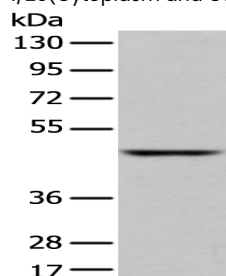
研究领域: Metabolism

储存和运输: Store at -20°C. Avoid repeated freezing and thawing



Immunohistochemistry analysis of paraffin embedded Human prostate cancer tissue using 215012(SLC2A6 Antibody) at a dilution of 1/25(Cytoplasm and Cell membrane).

In comparison with the IHC on the left, the same paraffin-embedded Human prostate cancer tissue is first treated with the synthetic peptide and then with 215012(Anti-SLC2A6 Antibody) at dilution 1/25.



Gel: 8%SDS-PAGE, Lysate: 40 µg;

Lane: Human fetal liver tissue;

Primary antibody: 215012(SLC2A6 Antibody) at dilution 1/350;

Secondary antibody: Goat anti rabbit IgG at 1/8000 dilution;

Exposure time: 1 minute