

SLC2A5 RABBIT PAB

货号: S219824

产品全名: SLC2A5 兔多抗

基因符号: GLUT5, GLUT-5

UNIPROT ID: P22732 (Gene Accession - NP_003030)

背景: GLUT5 is a fructose transporter expressed on the apical border of enterocytes in the small intestine. GLUT5 allows for fructose to be transported from the intestinal lumen into the enterocyte by facilitated diffusion due to fructose's high concentration in the intestinal lumen. GLUT5 is also expressed in skeletal muscle, testis, kidney, fat tissue, and brain. Fructose malabsorption or Dietary Fructose Intolerance is a dietary disability of the small intestine, where the amount of fructose carrier in enterocytes is deficient. In humans the GLUT5 protein is encoded by the SLC2A5 gene.

抗原: Synthetic peptide of human SLC2A5

经过测试的应用: ELISA, IHC

推荐稀释比: IHC: Oct-50; ELISA: 1000-2000

种属反应性: Rabbit

克隆性: Rabbit Polyclonal

亚型: Immunogen-specific rabbit IgG

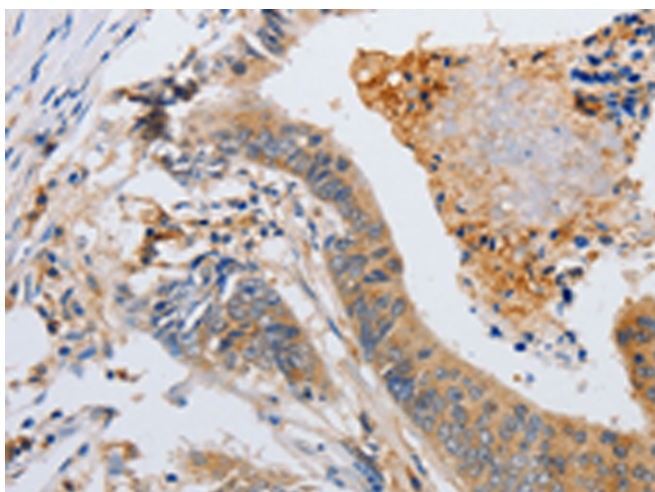
纯化: Antigen affinity purification

种属反应性: Human

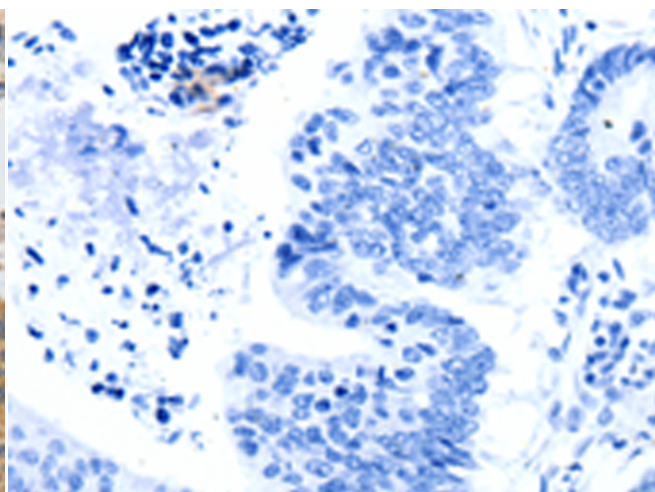
成分: PBS (without Mg²⁺ and Ca²⁺), pH 7.4, 150 mM NaCl, 0.05% Sodium Azide and 40% glycerol

研究领域: Metabolism, Cancer

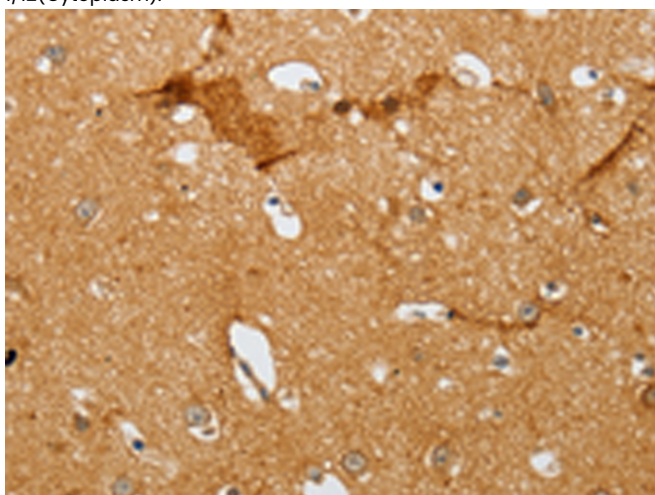
储存和运输: Store at -20°C. Avoid repeated freezing and thawing



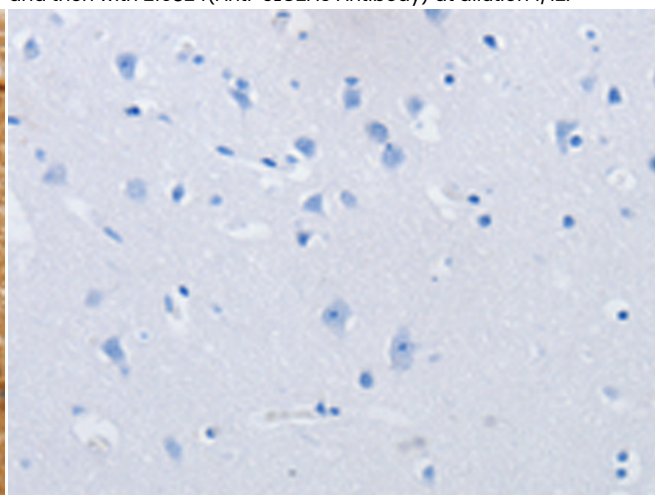
Immunohistochemistry analysis of paraffin embedded Human colon cancer tissue using 219824(SLC2A5 Antibody) at a dilution of 1/12(Cytoplasm).



In comparison with the IHC on the left, the same paraffin-embedded Human colon cancer tissue is first treated with the synthetic peptide and then with 219824(Anti-SLC2A5 Antibody) at dilution 1/12.



The image on the left is immunohistochemistry of paraffin-embedded Human brain tissue using 219824(Anti-SLC2A5 Antibody) at a dilution of 1/12.



In comparison with the IHC on the left, the same paraffin-embedded Human brain tissue is first treated with synthetic peptide and then with D260437(Anti-SLC2A5 Antibody) at dilution 1/12.



Product Description

Pioneering GTPase and Oncogene Product Development since 2010
