

## SLC2A12 RABBIT PAB

货号: S219825

产品全名: SLC2A12 兔多抗

基因符号: GLUT8; GLUT12

**UNIPROT ID:** Q8TD20 (Gene Accession - NP\_660159)

**背景:** SLC2A12 belongs to a family of transporters that catalyze the uptake of sugars through facilitated diffusion (Rogers et al., 2002). This family of transporters show conservation of 12 transmembrane helices as well as functionally significant amino acid residues (Joost and Thorens, 2001 [PubMed 11780753]).

**抗原:** Synthetic peptide of human SLC2A12

**经过测试的应用:** ELISA, IHC

**推荐稀释比:** IHC: 50-100; ELISA: 5000-10000

**种属反应性:** Rabbit

**克隆性:** Rabbit Polyclonal

**亚型:** Immunogen-specific rabbit IgG

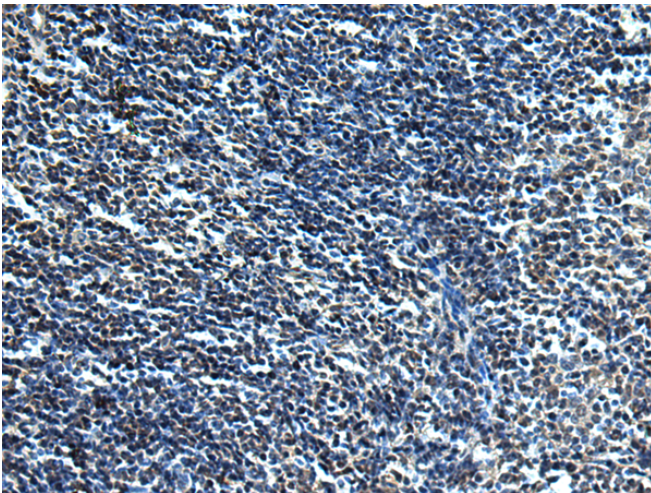
**纯化:** Antigen affinity purification

**种属反应性:** Human

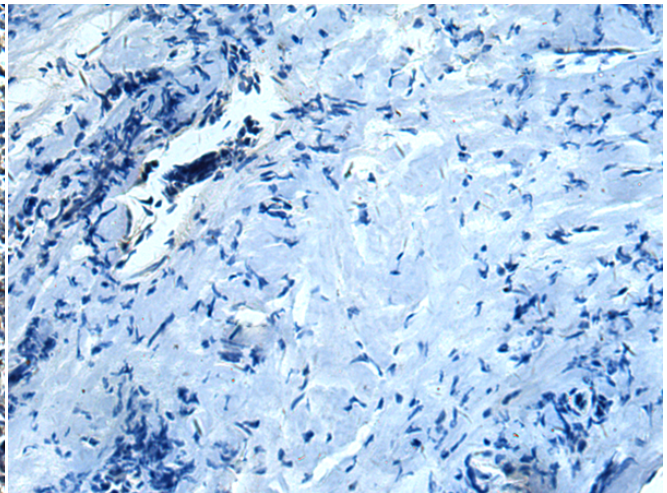
**成分:** PBS (without Mg<sup>2+</sup> and Ca<sup>2+</sup>), pH 7.4, 150 mM NaCl, 0.05% Sodium Azide and 40% glycerol

**研究领域:** Metabolism, Cardiovascular

**储存和运输:** Store at -20°C. Avoid repeated freezing and thawing



Immunohistochemistry analysis of paraffin embedded Human tonsil tissue using 219825 (SLC2A12 Antibody) at a dilution of 1/30 (Cytoplasm).



In comparison with the IHC on the left, the same paraffin-embedded Human tonsil tissue is first treated with the synthetic peptide and then with 219825 (Anti-SLC2A12 Antibody) at dilution 1/30.