

## SLC2A11 RABBIT PAB

货号: S213576

产品全名: SLC2A11 兔多抗

基因符号: GLUT10, GLUT11, SLC2A11-a, SLC2A11-c

**UNIPROT ID:** Q9BYW1 (Gene Accession - NP\_110434)

**背景:** Solute carrier family 2, facilitated glucose transporter member 11 (SLC2A11) also known as glucose transporter type 10/11 (GLUT-10/11) is a protein that in humans is encoded by the SLC2A11 gene. SLC2A11 belongs to a family of plasma membrane proteins that mediate transport of sugars across the membrane by facilitative diffusion.

**抗原:** Synthetic peptide of human SLC2A11

**经过测试的应用:** ELISA, IHC

**推荐稀释比:** IHC: 100-300; ELISA: 2000-10000

**种属反应性:** Rabbit

**克隆性:** Rabbit Polyclonal

**亚型:** Immunogen-specific rabbit IgG

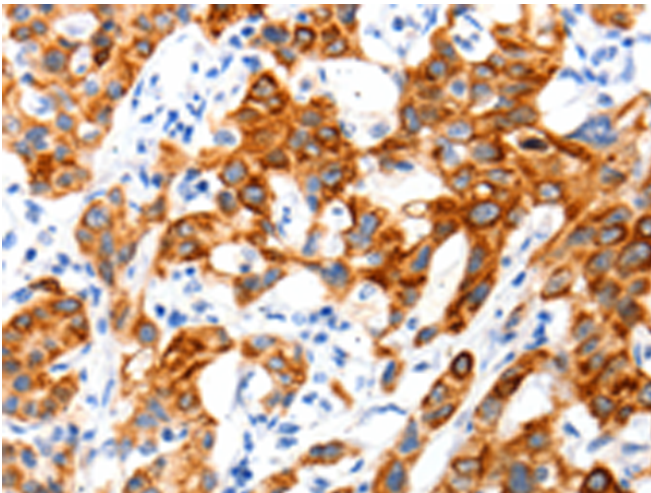
**纯化:** Antigen affinity purification

**种属反应性:** Human

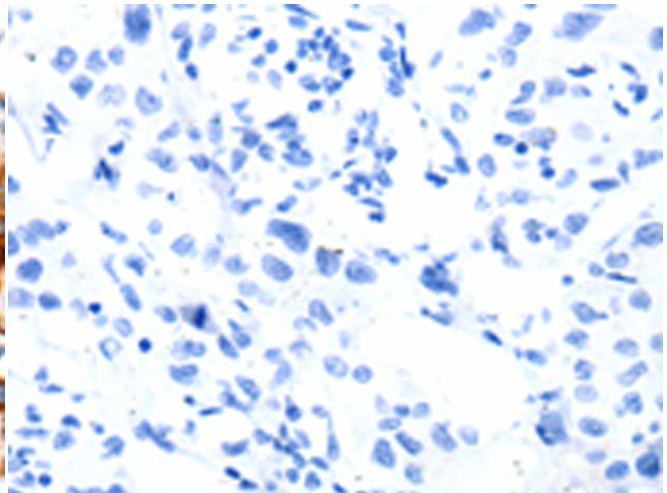
**成分:** PBS (without Mg<sup>2+</sup> and Ca<sup>2+</sup>), pH 7.4, 150 mM NaCl, 0.05% Sodium Azide and 40% glycerol

**研究领域:** Signal Transduction

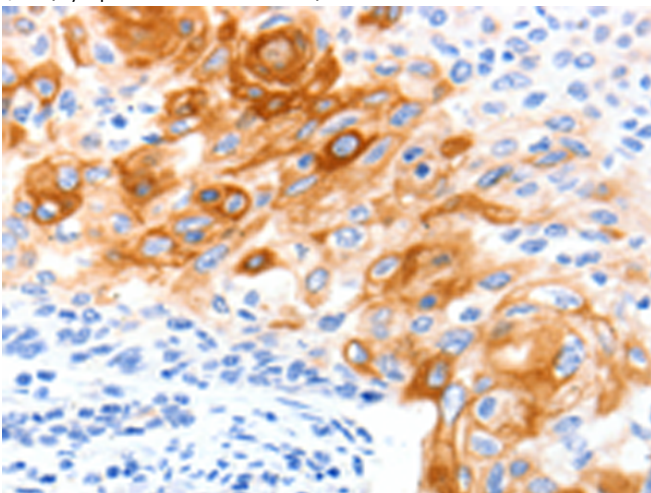
**储存和运输:** Store at -20°C. Avoid repeated freezing and thawing



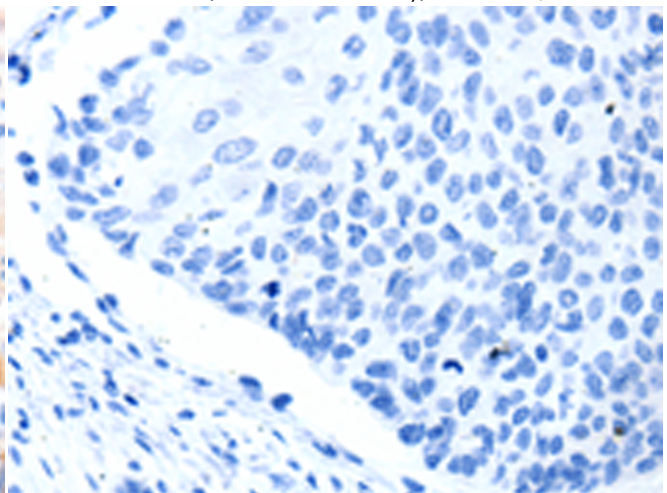
Immunohistochemistry analysis of paraffin embedded Human lung cancer tissue using 213576 (SLC2A11 Antibody) at a dilution of 1/140 (Cytoplasm, Cell membrane).



In comparison with the IHC on the left, the same paraffin-embedded Human lung cancer tissue is first treated with the synthetic peptide and then with 213576 (Anti-SLC2A11 Antibody) at dilution 1/140.



The image on the left is immunohistochemistry of paraffin-embedded Human cervical cancer tissue using 213576 (Anti-SLC2A11 Antibody) at a dilution of 1/140.



In comparison with the IHC on the left, the same paraffin-embedded Human cervical cancer tissue is first treated with synthetic peptide and then with D160439 (Anti-SLC2A11 Antibody) at dilution 1/140.



# Product Description

Pioneering GTPase and Oncogene Product Development since 2010

---