

SLC27A4 RABBIT PAB

货号: S217824

产品全名: SLC27A4 兔多抗

基因符号: IPS; FATP4; ACSVL4

UNIPROT ID: Q6P1M0 (Gene Accession - BC009959)

背景: This gene encodes a member of a family of fatty acid transport proteins, which are involved in translocation of long-chain fatty acids across the plasma membrane. This protein is expressed at high levels on the apical side of mature enterocytes in the small intestine, and appears to be the principal fatty acid transporter in enterocytes. Clinical studies suggest this gene as a candidate gene for the insulin resistance syndrome. Mutations in this gene have been associated with ichthyosis prematurity syndrome.

抗原: Fusion protein of human SLC27A4

经过测试的应用: ELISA, WB, IHC

推荐稀释比: IHC: 25-100;WB: 200-1000;ELISA: 5000-10000

种属反应性: Rabbit

克隆性: Rabbit Polyclonal

亚型: Immunogen-specific rabbit IgG

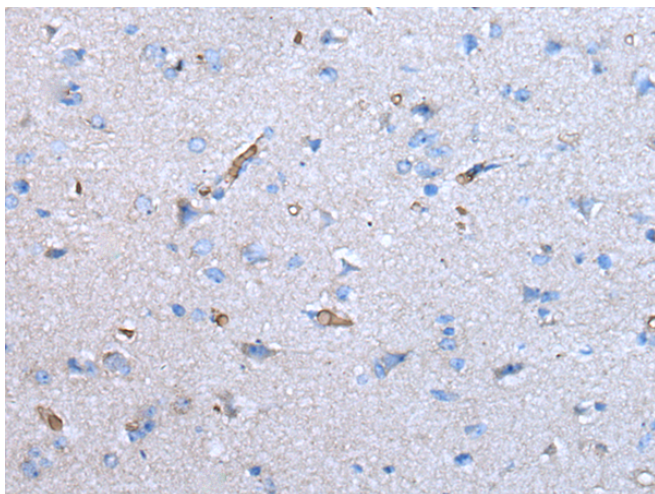
纯化: Antigen affinity purification

种属反应性: Human, Mouse

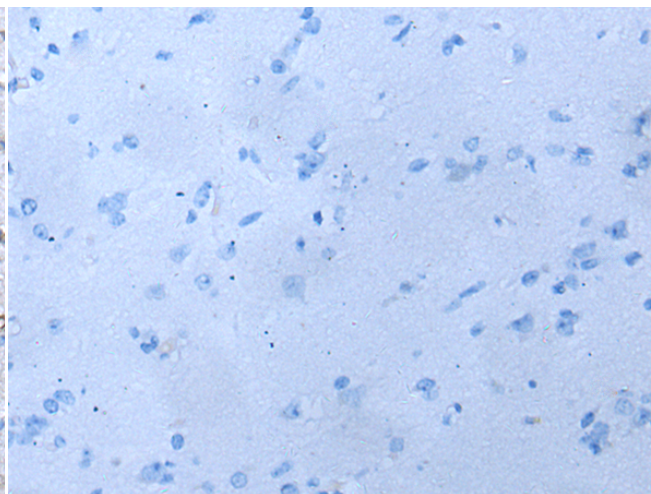
成分: PBS (without Mg²⁺ and Ca²⁺), pH 7.4, 150 mM NaCl, 0.05% Sodium Azide and 40% glycerol

研究领域: Metabolism, Neuroscience, Cardiovascular

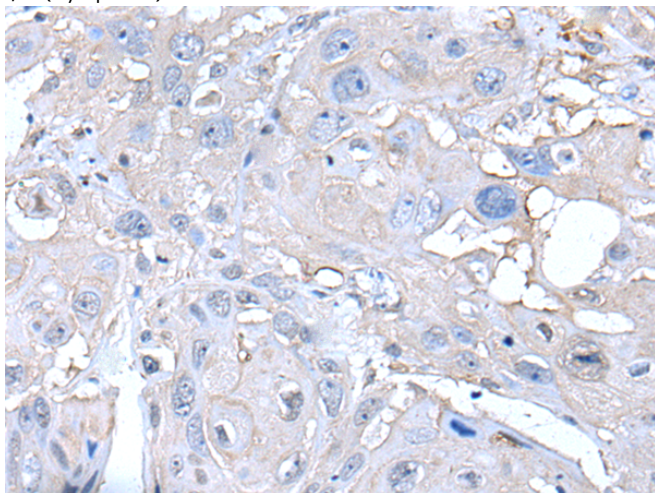
储存和运输: Store at -20°C. Avoid repeated freezing and thawing



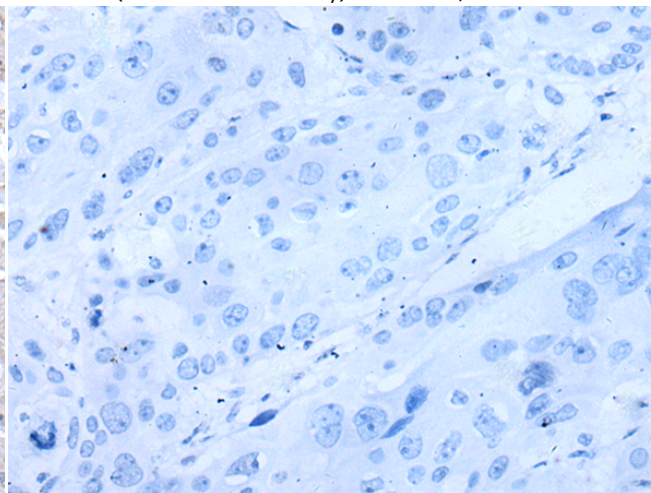
Immunohistochemistry analysis of paraffin embedded Human brain tissue using 217824(SLC27A4 Antibody) at a dilution of 1/35(Cytoplasm).



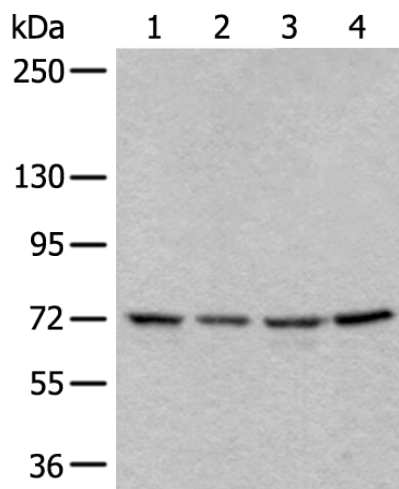
In comparison with the IHC on the left, the same paraffin-embedded Human brain tissue is first treated with the fusion protein and then with 217824(Anti-SLC27A4 Antibody) at dilution 1/35.



The image on the left is immunohistochemistry of paraffin-embedded Human esophagus cancer tissue using 217824(Anti-SLC27A4 Antibody) at a dilution of 1/35.



In comparison with the IHC on the left, the same paraffin-embedded Human esophagus cancer tissue is first treated with fusion protein and then with D223165(Anti-SLC27A4 Antibody) at dilution 1/35.



Gel: 6%SDS-PAGE, Lysate: 40 µg;
 Lane 1-4: PC-3, Hela, 293T and HEPG2 cell lysates;
 Primary antibody: 217824(SLC27A4 Antibody) at dilution 1/350;
 Secondary antibody: Goat anti rabbit IgG at 1/8000 dilution;
 Exposure time: 20 seconds



Product Description

Pioneering GTPase and Oncogene Product Development since 2010
