

SLC26A3 RABBIT PAB

货号: S218916

产品全名: SLC26A3 兔多抗

基因符号: CLD; DRA

UNIPROT ID: P40879 (Gene Accession - BC025671)

背景: The protein encoded by this gene is a transmembrane glycoprotein that transports chloride ions across the cell membrane in exchange for bicarbonate ions. It is localized to the mucosa of the lower intestinal tract, particularly to the apical membrane of columnar epithelium and some goblet cells. The protein is essential for intestinal chloride absorption, and mutations in this gene have been associated with congenital chloride diarrhea.

抗原: Fusion protein of human SLC26A3

经过测试的应用: ELISA, WB, IHC

推荐稀释比: IHC: 30-150;WB: 500-2000;ELISA: 5000-10000

种属反应性: Rabbit

克隆性: Rabbit Polyclonal

亚型: Immunogen-specific rabbit IgG

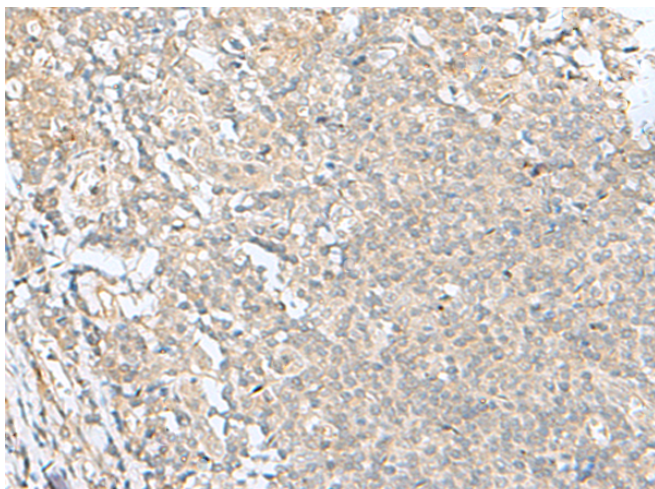
纯化: Antigen affinity purification

种属反应性: Human, Mouse, Rat

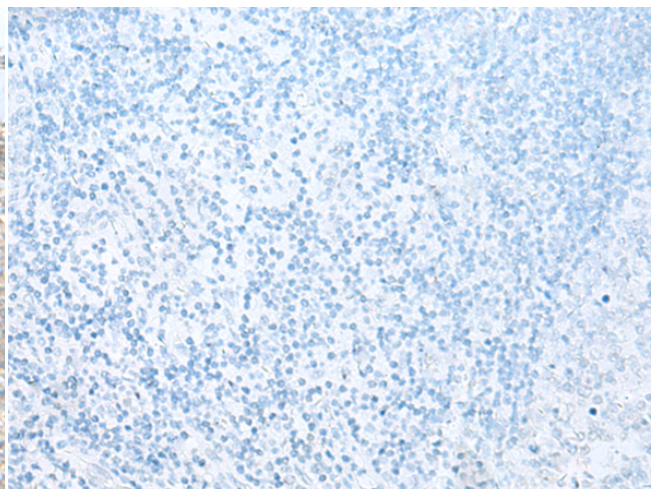
成分: PBS (without Mg²⁺ and Ca²⁺), pH 7.4, 150 mM NaCl, 0.05% Sodium Azide and 40% glycerol

研究领域: Metabolism, Immunology

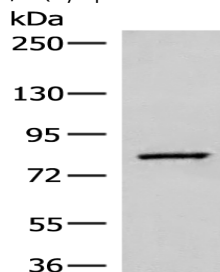
储存和运输: Store at -20°C. Avoid repeated freezing and thawing



Immunohistochemistry analysis of paraffin embedded Human tonsil tissue using 218916 (SLC26A3 Antibody) at a dilution of 1/35 (Cytoplasm and Cell membrane).



In comparison with the IHC on the left, the same paraffin-embedded Human tonsil tissue is first treated with the fusion protein and then with 218916 (Anti-SLC26A3 Antibody) at dilution 1/35.



Gel: 6%SDS-PAGE, Lysate: 40 µg;

Lane: Human hepatocellular carcinoma tissue lysate;

Primary antibody: 218916 (SLC26A3 Antibody) at dilution 1/250;

Secondary antibody: Goat anti rabbit IgG at 1/8000 dilution;

Exposure time: 10 seconds