

SLC25A26 RABBIT PAB

货号: S217823

产品全名: SLC25A26 兔多抗

基因符号: SAMC

UNIPROT ID: Q70HW3 (Gene Accession - BC012852)

背景: Mitochondrial carriers, including SLC25A26, are a family of transport proteins found mostly in the inner membranes of mitochondria. They shuttle metabolites and cofactors through the mitochondrial membrane

抗原: Fusion protein of human SLC25A26

经过测试的应用: ELISA, IHC

推荐稀释比: IHC: 25-100; ELISA: 2000-5000

种属反应性: Rabbit

克隆性: Rabbit Polyclonal

亚型: Immunogen-specific rabbit IgG

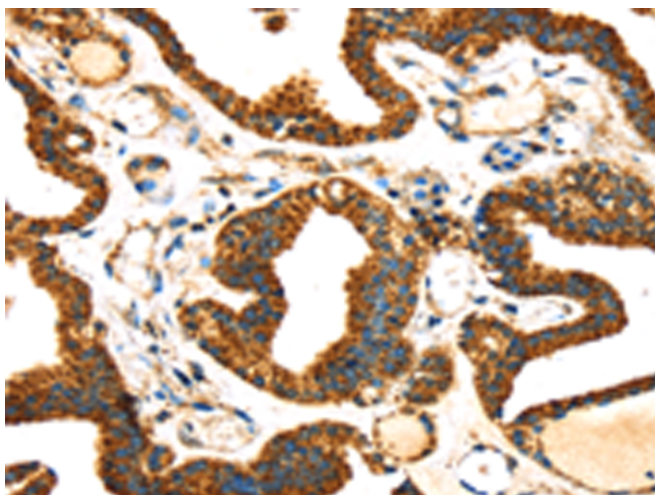
纯化: Antigen affinity purification

种属反应性: Human, Mouse

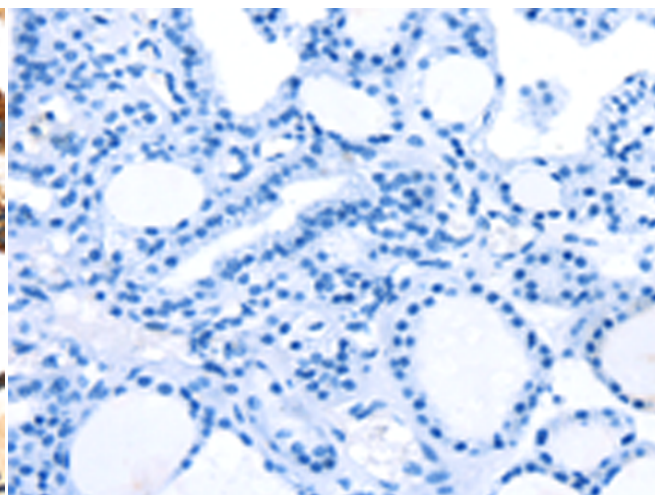
成分: PBS (without Mg²⁺ and Ca²⁺), pH 7.4, 150 mM NaCl, 0.05% Sodium Azide and 40% glycerol

研究领域: Metabolism

储存和运输: Store at -20°C. Avoid repeated freezing and thawing



Immunohistochemistry analysis of paraffin embedded Human thyroid cancer tissue using 217823(SLC25A26 Antibody) at a dilution of 1/30(Cytoplasm).



In comparison with the IHC on the left, the same paraffin-embedded Human thyroid cancer tissue is first treated with the fusion protein and then with 217823(Anti-SLC25A26 Antibody) at dilution 1/30.