

SLC25A13 RABBIT PAB

货号: S217821

产品全名: SLC25A13 兔多抗

基因符号: CTLN2; CITRIN; ARALAR2

UNIPROT ID: Q9UJS0 (Gene Accession - BC006566)

背景: This gene is a member of the mitochondrial carrier family. The encoded protein contains four EF-hand Ca^{2+} binding motifs in the N-terminal domain, and localizes to mitochondria. The protein catalyzes the exchange of aspartate for glutamate and a proton across the inner mitochondrial membrane, and is stimulated by calcium on the external side of the inner mitochondrial membrane. Mutations in this gene result in citrullinemia, type II. Multiple transcript variants encoding different isoforms have been found for this gene.

抗原: Fusion protein of human SLC25A13

经过测试的应用: ELISA, WB, IHC

推荐稀释比: IHC: 25-100; WB: 500-2000; ELISA: 2000-5000

种属反应性: Rabbit

克隆性: Rabbit Polyclonal

亚型: Immunogen-specific rabbit IgG

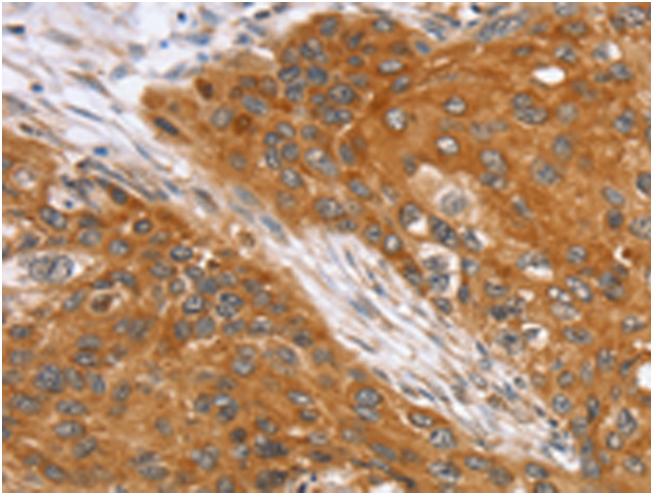
纯化: Antigen affinity purification

种属反应性: Human, Mouse

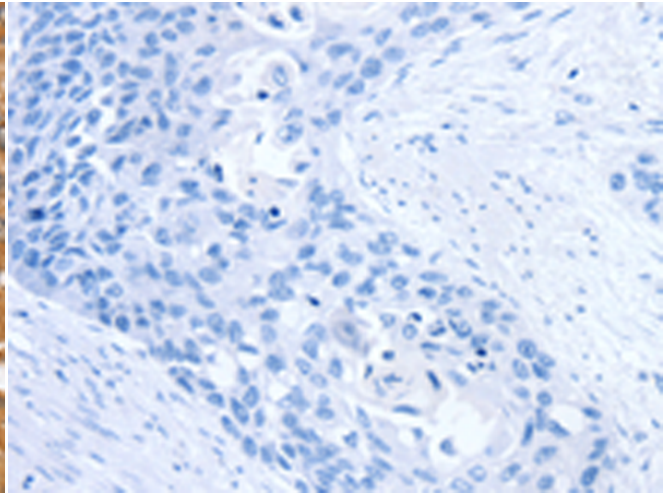
成分: PBS (without Mg^{2+} and Ca^{2+}), pH 7.4, 150 mM NaCl, 0.05% Sodium Azide and 40% glycerol

研究领域: Metabolism, Signal Transduction, Cancer, Neuroscience

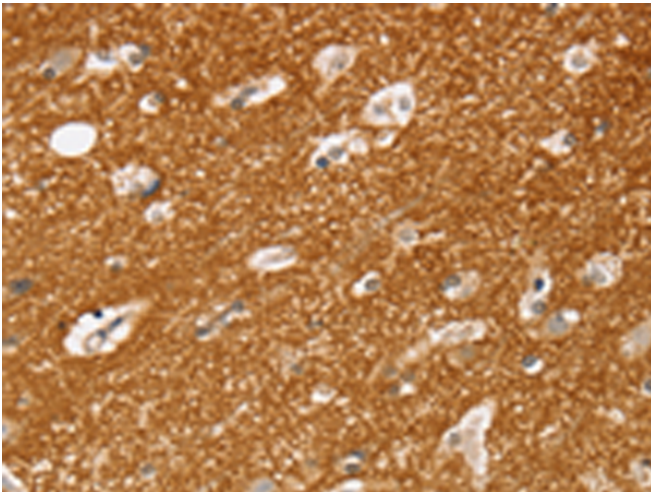
储存和运输: Store at -20°C . Avoid repeated freezing and thawing



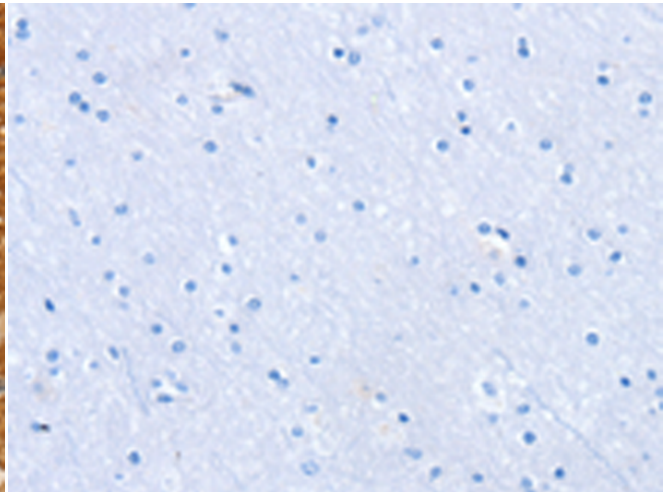
Immunohistochemistry analysis of paraffin embedded Human esophagus cancer tissue using 217821 (SLC25A13 Antibody) at a dilution of 1/35 (Cytoplasm).



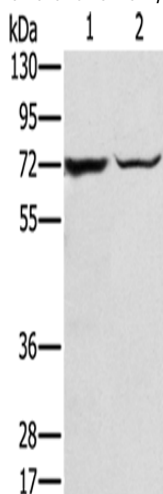
In comparison with the IHC on the left, the same paraffin-embedded Human esophagus cancer tissue is first treated with the fusion protein and then with 217821 (Anti-SLC25A13 Antibody) at dilution 1/35.



The image on the left is immunohistochemistry of paraffin-embedded Human brain tissue using 217821 (Anti-SLC25A13 Antibody) at a dilution of 1/35.



In comparison with the IHC on the left, the same paraffin-embedded Human brain tissue is first treated with fusion protein and then with D223159 (Anti-SLC25A13 Antibody) at dilution 1/35.



Gel: 8% SDS-PAGE, Lysate: 40 µg;
Lane 1-2: Mouse liver tissue, HepG2 cells;
Primary antibody: 217821 (SLC25A13 Antibody) at dilution 1/450;
Secondary antibody: Goat anti rabbit IgG at 1/8000 dilution;
Exposure time: 20 seconds

