

SLC25A12 RABBIT MAB

货号: N262906

产品全名: SLC25A12 兔单克隆抗体

基因符号 AGC1; ARALAR; EIEE39

UNIPROT ID: O75746

背景: Mitochondrial and calcium-binding carrier that catalyzes the calcium-dependent exchange of cytoplasmic glutamate with mitochondrial aspartate across the mitochondrial inner membrane (PubMed:11566871, PubMed:25410934). May have a function in the urea cycle (PubMed:11566871).

抗原: A synthetic peptide of human SLC25A12

经过测试的应用: WB,IP

推荐稀释比: WB: 1/500-1/1000 IP: 1/20

种属反应性: Rabbit

克隆性: Rabbit Monoclonal

克隆编号: R06-9E3

分子量: Calculated MW: 75 kDa; Observed MW: 75 kDa

亚型: IgG

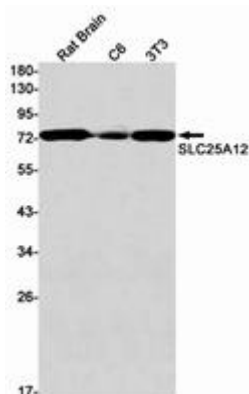
纯化: Affinity Purified

种属反应性: Mouse,Rat

成分: PBS (without Mg²⁺ and Ca²⁺), pH 7.3 containing 50% glycerol, 0.5% BSA and 0.02% sodium azide

研究领域: Neuroscience

储存和运输: Store at -20°C. Avoid repeated freezing and thawing



Western blot analysis of SLC25A12 in rat Brain, C6, 3T3 lysates using SLC25A12 antibody.



Product Description

Pioneering GTPase and Oncogene Product Development since 2010
