

## SLC22A7 RABBIT PAB

货号: S222387

产品全名: SLC22A7 兔多抗

基因符号 NLT; OAT2; hOAT11

**UNIPROT ID:** Q9Y694 (Gene Accession - NP\_696961)

**背景:** The protein encoded by this gene is involved in the sodium-independent transport and excretion of organic anions, some of which are potentially toxic. The encoded protein is an integral membrane protein and appears to be localized to the basolateral membrane of the kidney. Alternatively spliced transcript variants encoding different isoforms have been described.

**抗原:** Synthetic peptide of human SLC22A7

**经过测试的应用:** ELISA, IHC

**推荐稀释比:** IHC: 100-200; ELISA: 5000-10000

**种属反应性:** Rabbit

**克隆性:** Rabbit Polyclonal

**亚型:** Immunogen-specific rabbit IgG

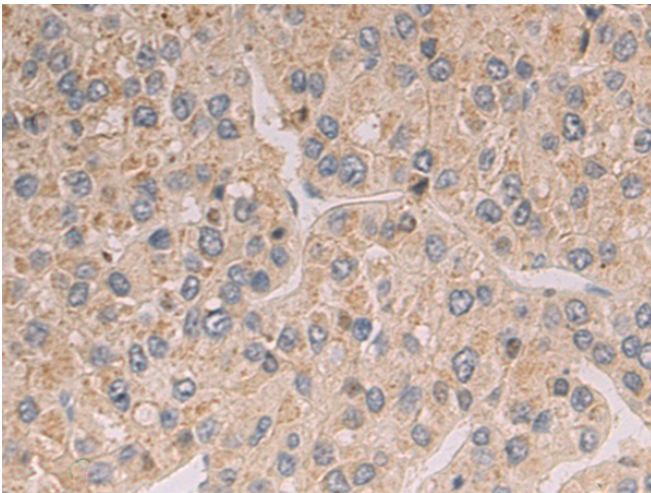
**纯化:** Antigen affinity purification

**种属反应性:** Human, Rat

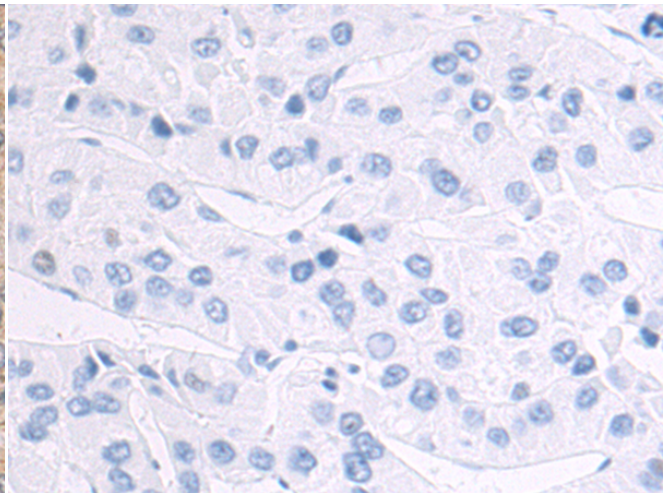
**成分:** PBS (without Mg<sup>2+</sup> and Ca<sup>2+</sup>), pH 7.4, 150 mM NaCl, 0.05% Sodium Azide and 40% glycerol

**研究领域:** Signal Transduction

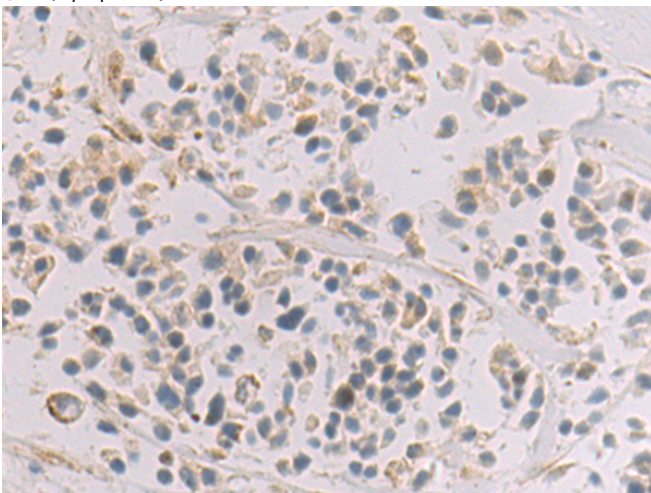
**储存和运输:** Store at -20°C. Avoid repeated freezing and thawing



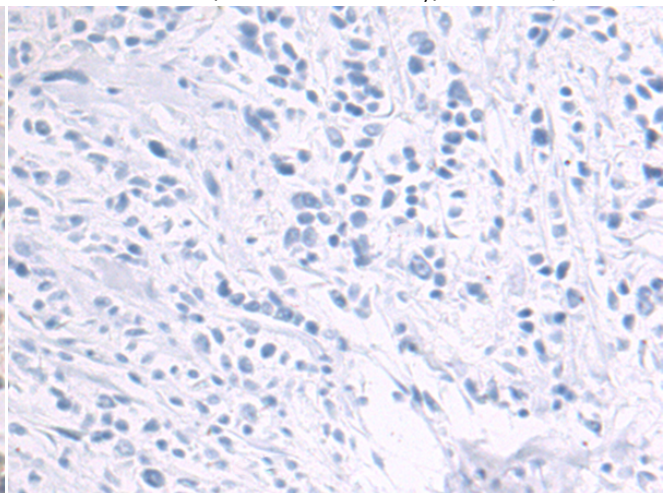
Immunohistochemistry analysis of paraffin embedded Human liver cancer tissue using 222387(SLC22A7 Antibody) at a dilution of 1/100(Cytoplasm).



In comparison with the IHC on the left, the same paraffin-embedded Human liver cancer tissue is first treated with the synthetic peptide and then with 222387(Anti-SLC22A7 Antibody) at dilution 1/100.



The image on the left is immunohistochemistry of paraffin-embedded Human breast cancer tissue using 222387(Anti-SLC22A7 Antibody) at a dilution of 1/100.



In comparison with the IHC on the left, the same paraffin-embedded Human breast cancer tissue is first treated with synthetic peptide and then with D264525(Anti-SLC22A7 Antibody) at dilution 1/100.



# Product Description

Pioneering GTPase and Oncogene Product Development since 2010

---