

SLC22A6 RABBIT PAB

货号: S220156

产品全名: SLC22A6 兔多抗

基因符号: OATI, PAHT, HOATI, ROATI

UNIPROT ID: Q4U2R8 (Gene Accession - NP_004781)

背景: The protein encoded by this gene is involved in the sodium-dependent transport and excretion of organic anions, some of which are potentially toxic. The encoded protein is an integral membrane protein and may be localized to the basolateral membrane. Four transcript variants encoding four different isoforms have been found for this gene. Functions as organic anion exchanger when the uptake of one molecule of organic anion is coupled with an efflux of one molecule of endogenous dicarboxylic acid (glutarate, ketoglutarate, etc). Mediates the sodium-independent uptake of 2,3-dimercapto-1-propanesulfonic acid (DMPS) By similarity.

抗原: Synthetic peptide of human SLC22A6

经过测试的应用: ELISA, WB, IHC

推荐稀释比: IHC: 50-200;WB: 1000-5000;ELISA: 2000-10000

种属反应性: Rabbit

克隆性: Rabbit Polyclonal

亚型: Immunogen-specific rabbit IgG

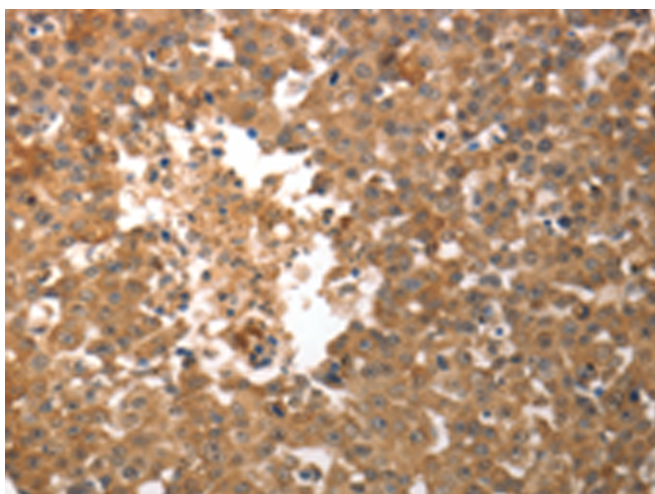
纯化: Antigen affinity purification

种属反应性: Human, Rat

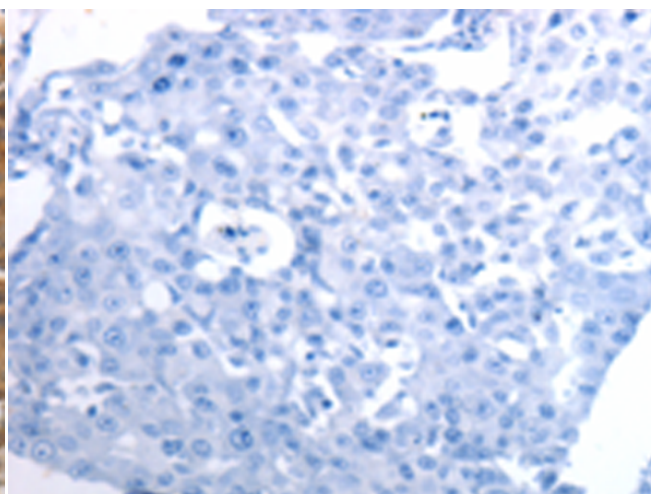
成分: PBS (without Mg²⁺ and Ca²⁺), pH 7.4, 150 mM NaCl, 0.05% Sodium Azide and 40% glycerol

研究领域: Metabolism

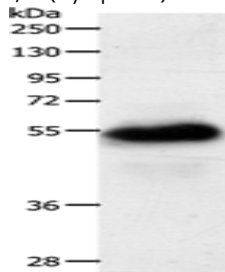
储存和运输: Store at -20°C. Avoid repeated freezing and thawing



Immunohistochemistry analysis of paraffin embedded Human breast cancer tissue using 220156 (SLC22A6 Antibody) at a dilution of 1/50 (Cytoplasm).



In comparison with the IHC on the left, the same paraffin-embedded Human breast cancer tissue is first treated with the synthetic peptide and then with 220156 (Anti-SLC22A6 Antibody) at dilution 1/50.



Gel: 10% SDS-PAGE, Lysate: 40 µg;

Lane: Human fetal kidney tissue;

Primary antibody: 220156 (SLC22A6 Antibody) at dilution 1/900;

Secondary antibody: Goat anti rabbit IgG at 1/8000 dilution;

Exposure time: 3 minutes