

## SLC22A3 RABBIT PAB

货号: S220202

产品全名: SLC22A3 兔多抗

基因符号: EMT; EMTH; OCT3

**UNIPROT ID:** O75751 (Gene Accession - NP\_068812)

**背景:** Polyspecific organic cation transporters in the liver, kidney, intestine, and other organs are critical for elimination of many endogenous small organic cations as well as a wide array of drugs and environmental toxins. This gene is one of three similar cation transporter genes located in a cluster on chromosome 6. The encoded protein contains twelve putative transmembrane domains and is a plasma integral membrane protein.

**抗原:** Synthetic peptide of human SLC22A3

**经过测试的应用:** ELISA, WB, IHC

**推荐稀释比:** IHC: 50-200;WB: 500-2000;ELISA: 2000-5000

**种属反应性:** Rabbit

**克隆性:** Rabbit Polyclonal

**亚型:** Immunogen-specific rabbit IgG

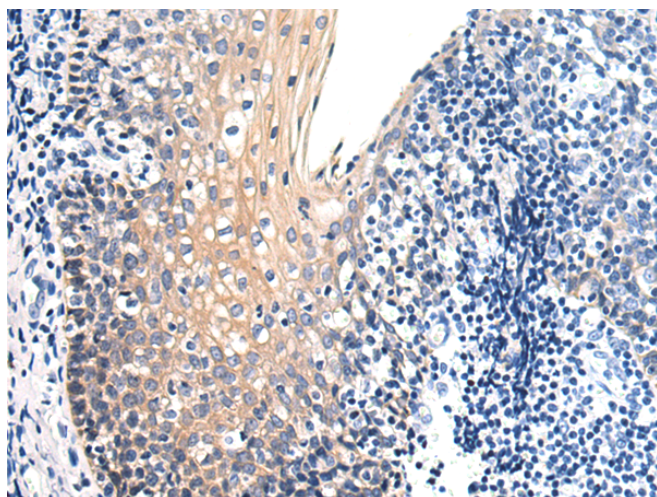
**纯化:** Antigen affinity purification

**种属反应性:** Human, Mouse, Rat

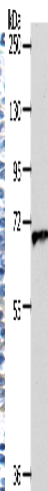
**成分:** PBS (without Mg<sup>2+</sup> and Ca<sup>2+</sup>), pH 7.4, 150 mM NaCl, 0.05% Sodium Azide and 40% glycerol

**研究领域:** Metabolism, Neuroscience

**储存和运输:** Store at -20°C. Avoid repeated freezing and thawing



Immunohistochemistry analysis of paraffin-embedded Human tonsil tissue using 220202(SLC22A3 Antibody) at a dilution of 1/40(Cytoplasm and Cell membrane).



Gel: 10%SDS-PAGE, Lysate: 40 µg;  
Lane: Human liver cancer tissue lysate;  
Primary antibody: 220202(SLC22A3 Antibody) at dilution 1/600;  
Secondary antibody: Goat anti rabbit IgG at 1/8000 dilution;  
Exposure time: 1 minute