

SLC18A2 RABBIT PAB

货号: S213293

产品全名: SLC18A2 兔多抗

基因符号 SVAT, SVMT, VAT2, VMAT2

UNIPROT ID: Q05940 (Gene Accession - NP_003045)

背景: The vesicular monoamine transporter acts to accumulate cytosolic monoamines into synaptic vesicles, using the proton gradient maintained across the synaptic vesicular membrane. Its proper function is essential to the correct activity of the monoaminergic systems that have been implicated in several human neuropsychiatric disorders. The transporter is a site of action of important drugs, including reserpine and tetrabenazine .

抗原: Synthetic peptide of human SLC18A2

经过测试的应用: ELISA, WB, IHC

推荐稀释比: IHC: 25-100;WB: 500-2000;ELISA: 2000-60000

种属反应性: Rabbit

克隆性 : Rabbit Polyclonal

亚型: Immunogen-specific rabbit IgG

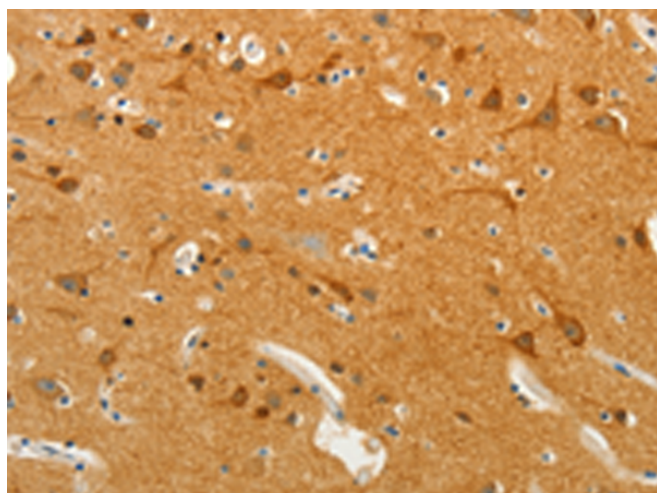
纯化: Antigen affinity purification

种属反应性: Human, Mouse, Rat

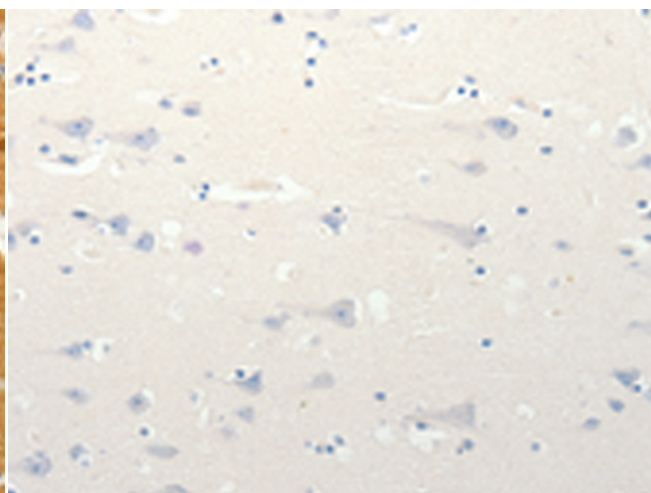
成分: PBS (without Mg²⁺ and Ca²⁺), pH 7.4, 150 mM NaCl, 0.05% Sodium Azide and 40% glycerol

研究领域: Neuroscience

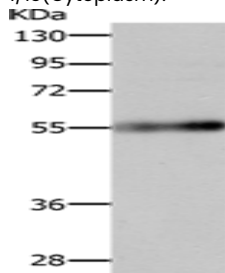
储存和运输: Store at -20°C. Avoid repeated freezing and thawing



Immunohistochemistry analysis of paraffin embedded Human brain tissue using 213293(SLC18A2 Antibody) at a dilution of 1/13(Cytoplasm).



In comparison with the IHC on the left, the same paraffin-embedded Human brain tissue is first treated with the synthetic peptide and then with 213293(Anti-SLC18A2 Antibody) at dilution 1/13.



Gel: 10%SDS-PAGE, Lysate: 40 µg;
Lane: Human cervical cancer tissue;
Primary antibody: 213293(SLC18A2 Antibody) at dilution 1/400;
Secondary antibody: Goat anti rabbit IgG at 1/8000 dilution;
Exposure time: 45 seconds