

SLC16A4 RABBIT PAB

货号: S219910

产品全名: SLC16A4 兔多抗

基因符号 MCT4; MCT5

UNIPROT ID: O15374 (Gene Accession - NP_001188475)

背景: Proton-linked monocarboxylate transporter. Catalyzes the rapid transport across the plasma membrane of many monocarboxylates such as lactate, pyruvate, branched-chain oxo acids derived from leucine, valine and isoleucine, and the ketone bodies acetoacetate, beta-hydroxybutyrate and acetate.

抗原: Synthetic peptide of human SLC16A4

经过测试的应用: ELISA, WB, IHC

推荐稀释比: IHC: 50-100; WB: 500-2000; ELISA: 5000-10000

种属反应性: Rabbit

克隆性: Rabbit Polyclonal

亚型: Immunogen-specific rabbit IgG

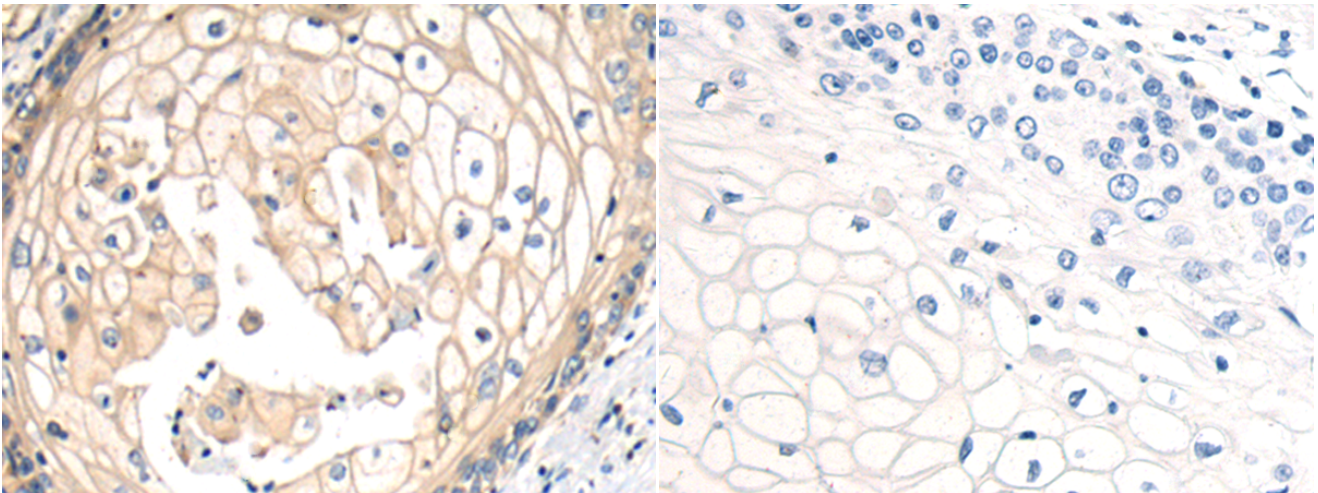
纯化: Antigen affinity purification

种属反应性: Human

成分: PBS (without Mg²⁺ and Ca²⁺), pH 7.4, 150 mM NaCl, 0.05% Sodium Azide and 40% glycerol

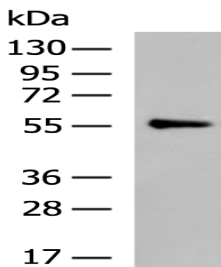
研究领域: Metabolism

储存和运输: Store at -20°C. Avoid repeated freezing and thawing



Immunohistochemistry analysis of paraffin embedded Human esophagus cancer tissue using 219910 (SLC16A4 Antibody) at a dilution of 1/60 (Cell membrane).

In comparison with the IHC on the left, the same paraffin-embedded Human esophagus cancer tissue is first treated with the synthetic peptide and then with 219910 (Anti-SLC16A4 Antibody) at dilution 1/60.



Gel: 8%SDS-PAGE, Lysate: 40 µg;

Lane: SKOV3 cell lysate;

Primary antibody: 219910 (SLC16A4 Antibody) at dilution 1/800;

Secondary antibody: HRP-conjugated Goat anti rabbit IgG at 1/5000 dilution;

Exposure time: 1 minute