

## SLC16A12 RABBIT PAB

货号: S220919

产品全名: SLC16A12 兔多抗

基因符号: CJMG; MCT12

**UNIPROT ID:** Q6ZSM3 (Gene Accession - NP\_998771)

**背景:** This gene encodes a transmembrane transporter that likely plays a role in monocarboxylic acid transport. A mutation in this gene has been associated with juvenile cataracts with microcornea and renal glucosuria.

**抗原:** Synthetic peptide of human SLC16A12

**经过测试的应用:** ELISA, IHC

**推荐稀释比:** IHC: 25-100; ELISA: 1000-2000

**种属反应性:** Rabbit

**克隆性:** Rabbit Polyclonal

**亚型:** Immunogen-specific rabbit IgG

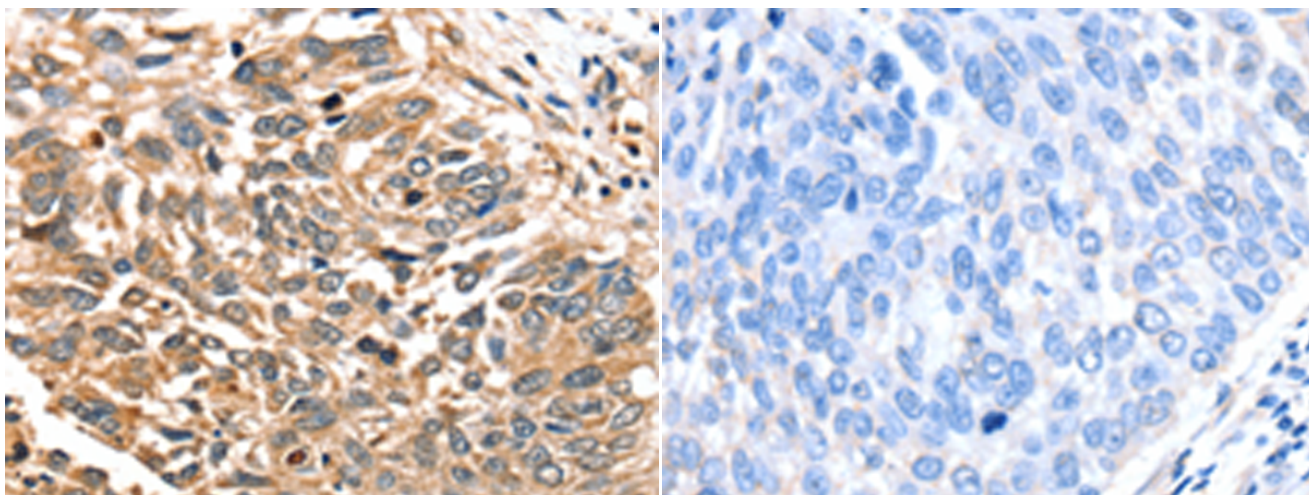
**纯化:** Antigen affinity purification

**种属反应性:** Human

**成分:** PBS (without Mg<sup>2+</sup> and Ca<sup>2+</sup>), pH 7.4, 150 mM NaCl, 0.05% Sodium Azide and 40% glycerol

**研究领域:** Metabolism, Neuroscience

**储存和运输:** Store at -20°C. Avoid repeated freezing and thawing



Immunohistochemistry analysis of paraffin embedded Human liver cancer tissue using 220919(SLC16A12 Antibody) at a dilution of 1/30(Cytoplasm).

In comparison with the IHC on the left, the same paraffin-embedded Human liver cancer tissue is first treated with the synthetic peptide and then with 220919(Anti-SLC16A12 Antibody) at dilution 1/30.